



CITY OF LOS ANGELES - DEPT. REC AND PARKS
2765 WABASH AVENUE LOS ANGELES, CALIFORNIA 90033
PHONE: 323-262-6534 INSTAGRAM: WABASH_RC
E-MAIL: WABASH.RECREATIONCENTER@LACITY.ORG



2025 Winter Wabash RC Holiday



CITY OF LOS ANGELES - DEPT. REC AND PARKS
2765 WABASH AVENUE LOS ANGELES, CALIFORNIA 90033
PHONE: 323-262-6534 INSTAGRAM: WABASH_RC
E-MAIL: WABASH.RECREATIONCENTER@LACITY.ORG

FACILITY INFORMATION

Center Hours of Operation

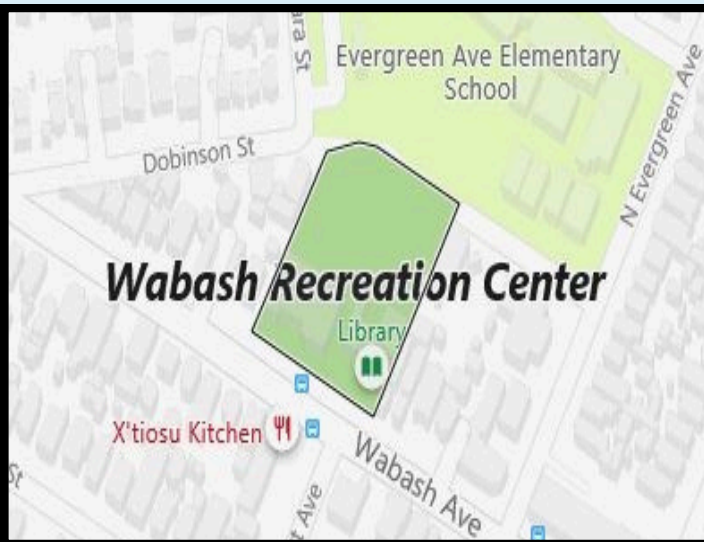
| | |
|----------|------------------|
| Monday | 11:00am - 9:00pm |
| Saturday | 9:00am - 4:00pm |
| Sunday | CLOSED |

Important Numbers

| | |
|--------------------------------|--------------|
| Wabash Recreation Center | 323.262.6534 |
| (Office) Wabash Recreation | 323.262.2110 |
| Center (Fax) Council Office 14 | 213.473.7014 |
| Camping Section Film Permit | 213.644.6220 |
| Office Maintenance Yard | 323.644.6220 |
| Municipal Sports Office | 213.485.4858 |
| | 818.246.5613 |
| | 213.485.1310 |
| Region Office | |

East District Recreation Centers

| | |
|-----------------------------|--------------|
| Boyle Heights Sports Center | 323.264.5136 |
| Costello | 213.485.9111 |
| Downey | 323.225.7100 |
| Evergreen | 323.262.0397 |
| Garcia | 323.265.4755 |
| Hazard | 213.485.6839 |
| Hollenbeck | 323.261.0113 |
| Lafayette | 213.384.0562 |
| Macarthur | 213.368.0520 |
| Pecan | 323.262.2736 |
| State Street | 213.847.2790 |



Wabash Advisory Board

The Wabash Park Advisory Board is a collective group of parents, coaches, volunteers, and other community members dedicated in making our community a better place. We are actively recruiting new members. For an application or more information, please contact the office: 323.262.6534

Upcoming Events

| Type of Activity | Registration Begins | Activity Starts |
|------------------|---------------------|-----------------|
| Winter Camp | Nov.18,2024 | Dec.16,2024 |
| Turkey Camp | Dec.2,2024 | Nov.20,2024 |
| Winter Sports | Nov.6,2024 | Jan.08,2025 |
| Spring Camp | | Mar.25,2025 |

(Dates subject to change)

Facility Closed on all City Holidays

| | |
|---------------------------|----------------------|
| Martin Luther King Jr Day | January 15, 2024 |
| President's Day | February 19,2024 |
| Cesar Chavez Day | March25, 2024 |
| MemorialDay | May27,2024 |
| JuneteenthDay | June 19, 2024 |
| Independence Day | July 4, 2024 |
| Labor Day | September 2, 2024 |
| Indigenous Peoples' Day | October 14, 2024 |
| Veterans Day | November 11, 2024 |
| Thanksgiving Day | November 28-29, 2024 |
| Christmas Day | December 25, 2024 |
| New Year's Day Observed | December 1, 2025 |

FACILITY REGULATIONS

Class Information

Class registration will begin Dec. 2nd, 2024 and will end Jan 13rd, 2025 unless otherwise stated. The recreation center reserves the right to cancel any class if minimum number of participants is not met. All classes will meet for 8 weeks. Students must meet the age requirements by the session start date. Staff reserves the right to require proof of age at any time, and may remove a student from a class if the student is not the appropriate age and/or does not have the necessary level, maturity, or skill. Makeups will not be rescheduled when a class is missed by a student. No refunds and/or credits are given for classes missed by students. Makeups for classes cancelled by the instructor will be rescheduled at the end of the session.

Registration

Registration Begins Monday, Dec 2, 2024. Walk-in hours are Monday - Friday, 11am to 5pm. Registration forms must be completed & fees paid before a participant is placed on a sports team or is able to participate in a class.

Payment Information

Cash, checks, and credit card payments are accepted. Cash payments must be made in exact amount only. Please make checks/money orders payable to:
City of L.A. Dept. of Rec. & Parks
A collection fee will be charged for each returned check.

Refund Policy

“Full refunds are only issued when the recreation center cancels the activity. A 15% cancellation fee is assessed for all refunds. Changes or transfers per class, sports league or day camp registration maybe assessed additional fees. After the first day of a session, the Recreation Center issues partial refund to patrons withdrawing from the activity.”

“Persons with disabilities are welcome to participate in our programs. Reasonable accommodation will be made with prior arrangements. Please be aware that some accommodations may take 30 days or longer. Please submit your request for an accommodation as soon as possible.”

Baseball Diamond Reservations

Call the Municipal sports office for all field use requests after 6pm Monday thru Friday at (818)246-5613. you may also contact the office at their alternative number Monday thru Thursday between the hours of 10am to noon at (818)246-5614 or (818)246-4088

Outdoor Basketball Court

Courts are open 10:00am to 9:00pm daily on a first come first served basis. Court rules are posted along the court fences. Please respect all court rules.

NO PRIVATE LESSONS ALLOWED!



“Achieving Gender Equality Through a Continuous Commitment to Girls and Women in Sports”

YOUTH SPORTS CO-REC



2025



WINTER BASKETBALL



LEAGUE STARTS JANUARY 13, 2025



League TIP-OFF will begin Saturday January 04, 2025

| DIVISIONS | ROOKIES | PEE-WEE | MINOR | MAJOR | JUNIOR |
|-----------|-----------|-----------|-----------|-----------|-----------|
| YEARS | 2018/2019 | 2016/2017 | 2014/2015 | 2012/2013 | 2009/2011 |

EVALUATIONS will be Tuesday December 3, 2024

| ROOKIES | PEE-WEE | MINOR | MAJOR/JUNIORS |
|---------|---------|--------|---------------|
| 5:00PM | 6:00PM | 7:00PM | 8:00PM |

EVALUATIONS will be Thursday December 12, 2024

| ROOKIES | PEE-WEE | MINOR | MAJOR/JUNIORS |
|---------|---------|--------|---------------|
| 5:00PM | 6:00PM | 7:00PM | 8:00PM |

EVALUATIONS will be Saturday December 14, 2024

| ROOKIES | PEE-WEE | MINOR | MAJOR/JUNIORS |
|---------|---------|---------|---------------|
| 10:00AM | 11:00AM | 12:00PM | 1:00PM |

"Persons with disabilities are welcome to participate in our classes and programs. Reasonable accommodations will be made with prior arrangements. Please be aware that some accommodations may take 30 days or longer. Please submit your request for an accommodation as soon as possible."

YOUTH SPORTS GIRLS PLAY LOS ANGELES



A

WINTER
GPLA

PLAY LA



GIRLS PLAY LOS ANGELES
BASKETBALL

LA
28

2025

LEAGUE STARTS
JANUARY 13, 2025



League TIP-OFF will begin Saturday January 04, 2025

DIVISIONS
YEARS

MINOR
2014/2015

MAJOR
2012/2013

JUNIOR
2009/2011

EVALUATIONS will be Tuesday December 10, 2024

DIVISIONS
TIME:

MINOR
6:00PM

MAJOR
7:00PM

JUNIOR
8:00PM

EVALUATIONS will be Thursday December 12, 2024

DIVISIONS
TIME:

MINOR
6:00PM

MAJOR
7:00PM

JUNIOR
8:00PM

EVALUATIONS will be Saturday December 14, 2024

DIVISIONS
TIME:

MINOR
11:00AM

MAJOR
12:00PM

JUNIOR
1:00PM

"Persons with disabilities are welcome to participate in our classes and programs. Reasonable accommodations will be made with prior arrangements. Please be aware that some accommodations may take 30 days or longer. Please submit your request for an accommodation as soon as possible."

YOUTH PROGRAMS

AFTER SCHOOL

REGISTRATION NOW!

CLUB

\$35.00 MONTHLY

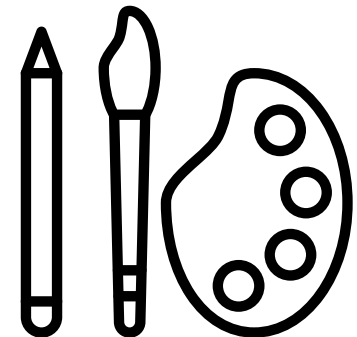
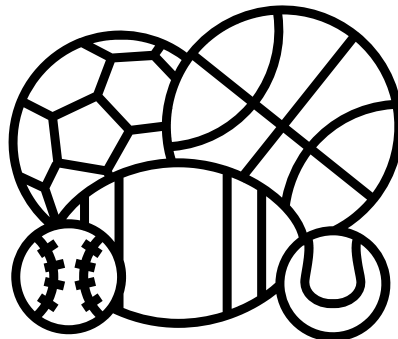
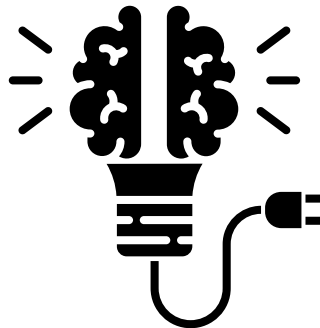
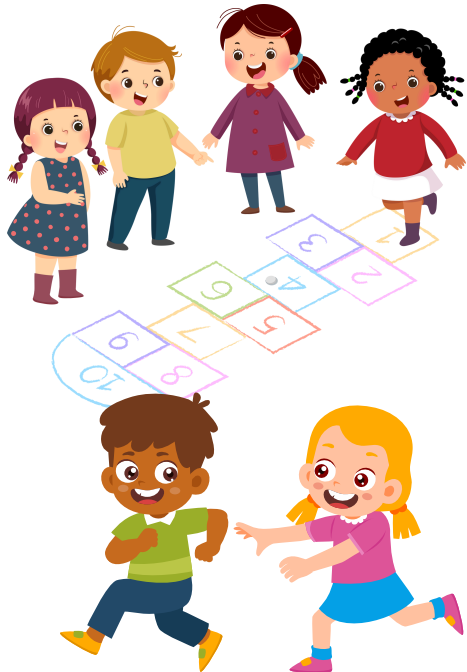
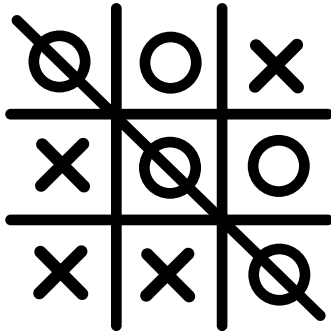
AGES: 5-12

MONDAY- FRIDAY

2:30PM - 5:30PM

**EVERGREEN ELEMENTARY PICK UPS'
NO AFTER-SCHOOL CLUB
ON CITY OBSERVED HOLIDAYS**

INSTRUCTOR: ANA FLORES



“Persons with disabilities are welcome to participate in our classes and programs. Reasonable accommodations will be made with prior arrangements. Please be aware that some accommodations may take 30 days or longer. Please submit your request for an accommodation as soon as possible.”

YOUTH PROGRAMS - WINTER CAMP



WABASH RC
WINTER CAMP

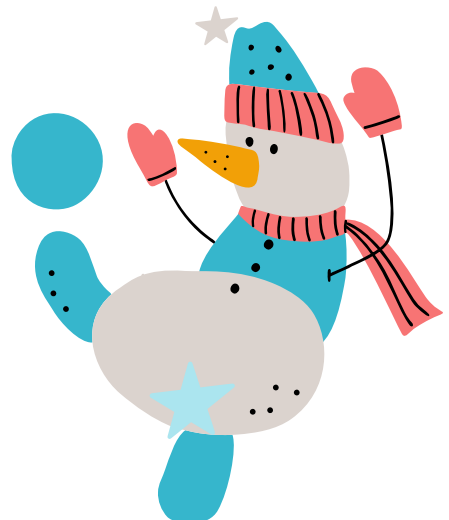
BEGINS
DECEMBER
16, 2024

REGISTRATION
OPENS
DECEMBER
09, 2024

AGE 5-12
YEARS
8:00AM-5:30PM

ENDS
JANUARY
03, 2025

ACTIVITIES
GAMES, SPORTS,
ARTS AND CRAFTS
AND MUCH MORE...



Persons with disabilities are welcome to participate in our classes and programs. Reasonable accommodations will be made with prior arrangements. Please be aware that some accommodations may take 30 days or longer. Please submit your request for an accommodation as soon as possible."

CLINICS & CLASSES FALL 2025

DATES CLINICS TIMES AGES INSTRUCTOR

**Dec. 4th,
12th, 16th Soccer
Skills 6:00pm-8:00pm 9-10 STAFF**

.....

**Dec. 4th,
12th, 16th Soccer
Skills 6:00pm-8:00pm 11-12 STAFF**

.....

**Dec. 3rd.
10th. 17th Basketball
Skills 6:00pm-8:00pm 9-10 STAFF**

.....

**Dec. 3rd.
10th. 17th Basketball
Skills 6:00pm-8:00pm 11-12 STAFF**

.....



**Dec. 6th,
13th, 20th GPLA
Volleyball Skills 6:00pm-8:00pm 7-10 STAFF**





.....



**Dec. 6th,
13th, 20th GPLA
Volleyball Skills 6:00pm-8:00pm 11-12 STAFF**

.....

CLINICS & CLASSES FALL 2025

| DATES | CLASSES | TIMES | AGES | INSTRUCTOR |
|---|----------------------------------|----------------------|---------------|-------------------|
| <i>Mondays'</i> | <i>Handball Skills</i> | <i>3:30pm-4:30pm</i> | <i>5 - 15</i> | <i>Gymnasium</i> |
| <i>Mondays'</i> | <i>Indoor Soccer Skills</i> | <i>4:30pm-5:30pm</i> | <i>8 - 15</i> | <i>Gymnasium</i> |
| <i>Tuesdays'</i> | <i>Kickball Skills</i> | <i>3:30pm-4:30pm</i> | <i>5 - 15</i> | <i>Gymnasium</i> |
| <i>Tuesdays'</i> | <i>Dodgeball Skills</i> | <i>4:30pm-5:30pm</i> | <i>5 - 15</i> | <i>Gymnasium</i> |
|  <i>Wednesdays'</i> | <i>GPLA Dodgeball</i> | <i>3:30pm-4:30pm</i> | <i>5 - 15</i> | <i>Gymnasium</i> |
|  <i>Wednesday'</i> | <i>GPLA Indoor Soccer Skills</i> | <i>4:30pm-5:30pm</i> | <i>5 - 15</i> | <i>Gymnasium</i> |
|  <i>Thursdays'</i> | <i>GPLA Handball Skills</i> | <i>3:30pm-4:30pm</i> | <i>5 - 15</i> | <i>Gymnasium</i> |
|  <i>Thursdays'</i> | <i>GPLA Fitness</i> | <i>4:30pm-5:30pm</i> | <i>8 - 15</i> | <i>Gymnasium</i> |
| <i>Thursdays'</i> | <i>Ultimate Frisbee</i> | <i>3:30pm-4:30pm</i> | <i>5 - 15</i> | <i>Field</i> |
| <i>Fridays'</i> | <i>Ping Pong</i> | <i>3:30pm-4:30pm</i> | <i>5 - 15</i> | <i>Gymnasium</i> |
| <i>Fridays'</i> | <i>Jump Rope</i> | <i>4:30pm-5:30pm</i> | <i>5 - 15</i> | <i>Gymnasium</i> |

CENTER ACTIVITIES

OPEN GYM

Saturdays'

all ages 2pm-4pm



High Speed Internet
Computer Center



This program is made possible in part through a Broadband Technology Opportunities Program (BTOP) grant from the U.S Department of Commerce, with funding from the American Recovery and Reinvestment Act. Times are subject to change.

Free to the Public - Internet Access, Microsoft Word, Excel, and other applications. Monday thru Fridays 10:30am to 2:30pm & 6:00pm to 8:00pm
Saturdays 9:00am to 4:00pm

The Boyle Heights Neighborhood Council Proudly Supports Wabash Recreation Center Meetings held at Boyle Height Senior Citizen Center 2844 E. 2nd St. LA, CA 90033

In the Community Room the second Tuesday of every month at 7pm

(323)264-5757

TEEN PROGRAMS

TEEN CLUB AT WABASH

Ages: 11 - 17 year olds

Keeping Teens Busy During After School Hours

We provide a safe place for teens to hangout and participate in many different activities. We offer homework assistance, sport games, arts & crafts, computer time and Friday Night Extreme Teens.

► REGISTER NOW FOR FREE !! ◀



Teen Club also participates in Community Service projects all around the City of Los Angeles. Field Trips are also available to Amusement Parks, Cultural Trips, Educational Trips, Performances, Snow Trips, and Sporting Events.

Wabash Teen Club is here to provide a youth program with structures and discipline in order to help the teens in our community succeed in school and life.

Teen Club is run by a Point System. In every program that a teen participates in during the month they earn points. The top seven point earners get to go on the field trips. Points can also be earned by having good grades in school and showing the report card to a staff member. Points can also be taken away if a teen club member does not follow the rules of the Recreation Center.

SPECIAL EVENTS

**Wabash
RC**

**Breakfast
with
Santa**

**Date:
December
12, 2024**

**Time:
10am-
1pm**

**Free
Food**

**Date:
December
7th, 2024**

**Free
Give aways**

“Persons with disabilities are welcome to participate in our classes and programs. Reasonable accommodations will be made with prior arrangements. Please be aware that some accommodations may take 30 days or longer. Please submit your request for an accommodation as soon as possible.”

City of Los Angeles

Mayor Karen Bass

Councilmember Kevin de Leon, 14th District

Department of Recreation and Parks

Board of Commissioners

Renata Simril - President

Luis Sanchez - Vice President

Marie Lloyd - Member

Fiona Hutton - Member

Benny Tran - Member

Takisha Sardin - Board Secretary

Jimmy Kim - General Manager

Matthew Rudnick - Executive Officer & Chief of Staff

Chinyere Stoneham - Acting Assistant General Manager, Recreation Services

Brenda Aguirre - Assistant General Manager, Special Operations Division

Cathie Santo-Domingo - Assistant General Manager -

Planning, Construction & Maintenance Branch

Metro Region

Anita Meacham - Superintendent, Recreation & Parks Operations

Kimberly Simonet - Principal Recreation Supervisor II, Recreation Division

Leslie Perez - Principal Recreation Supervisor I, Recreation Division

Carlos Alvarado - East District Supervisor

Wabash Recreation Center

Al Ramos - Recreation Facility Director

Ruben Lopez - Recreation Coordinator

Recreation Assistants

Ana Flores Peter Sandoval Jillian Arevalo

Esmeralda Rodriguez Cesar Aguilera

Jeremy Romero

Giselle Bello Jeanette Lopez

Eduardo Martinez

Jasmine Garcia Alexy Romagoza

Recreation Center Aides

Jonathan Honorato Delaila Gomez Luis Cordova

Maintenance Staff

Javier Solis - Superintendent, Park Maintenance Division

Julio Hernandez - Acting Principal Grounds Maintenance Supervisor II