



CITY OF LOS ANGELES - DEPARTMENT OF RECREATION AND PARKS

SYLMAR RECREATION CENTER

13109 BORDEN AVENUE, SYLMAR, CA 91342

TELEPHONE: (818) 367-5656

EMAIL: SYLMAR.RECREATIONCENTER@LACITY.ORG



GPLA SOCCER SPRING 2025

REGISTRATION INFO:

ONLINE:

FEBRUARY 3-7, 2025

STARTS @ 9:00AM

WALK-IN:

FEBRUARY 8, 2025

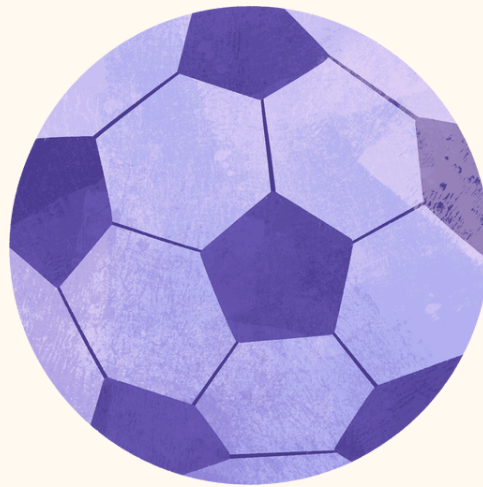
STARTS @ 9:00



****Walk-In registration will continue until league is full.****

Register online at:

laparks.org/reccenter/sylmar



AGES 5-15

ONLY \$10!

ONLY

**SIBLING
REQUESTS ON
SAME TEAM WILL
BE GRANTED.**



AGE / DIVISION FOR SPRING SOCCER IS DETERMINED AS OF JANUARY 1, 2025.

NO CREDIT OR REFUND UNLESS PROGRAM IS CANCELLED

DIVISION DIVISIÓN	YEAR BORN AÑO DE NACIMIENTO	EVALUTION DATE DÍA DE EVALUACIÓN	TIME TIEMPO
ROOKIES	2018-2019	MARCH 8, 2025 MARZO 8, 2025	5:30PM
PEE-WEE	2016-2017	MARCH 8, 2025 MARZO 8, 2025	5:30PM
MINOR	2014-2015	MARCH 8, 2025 MARZO 8, 2025	6:30PM
MAJOR	2012-2013	MARCH 8, 2025 MARZO 8, 2025	7:30PM
JUNIOR	2009-2011	MARCH 8, 2025 MARZO 8, 2025	8:30PM

PLAYLA YOUTH AND ADAPTIVE YOUTH SPORTS PROGRAM IS MADE POSSIBLE BY THE LA28 OLYMPIC AND PARALYMPIC GAMES PROVIDING YOUTH AN OPPORTUNITY TO PARTICIPATE FOR \$10. WAIVERS AVAILABLE, ASK FOR DETAILS.

PERSONS WITH DISABILITIES ARE WELCOMED TO PARTICIPATE IN OUR CLASSES AND PROGRAMS. REASONABLE ACCOMMODATIONS WILL BE MADE WITH PRIOR ARRANGEMENTS. PLEASE BE AWARE THAT SOME ACCOMMODATIONS MAY TAKE 30 DAYS OR LONGER. PLEASE SUBMIT YOUR REQUEST FOR AN ACCOMMODATION AS SOON AS POSSIBLE.