

CITY OF LOS ANGELES DEPARTMENT OF RECREATION & PARKS

OAKWOOD RECREATION CENTER



767 California Ave, Venice CA, 90291

310-452-7479

oakwood.recreationcenter@lacity.org

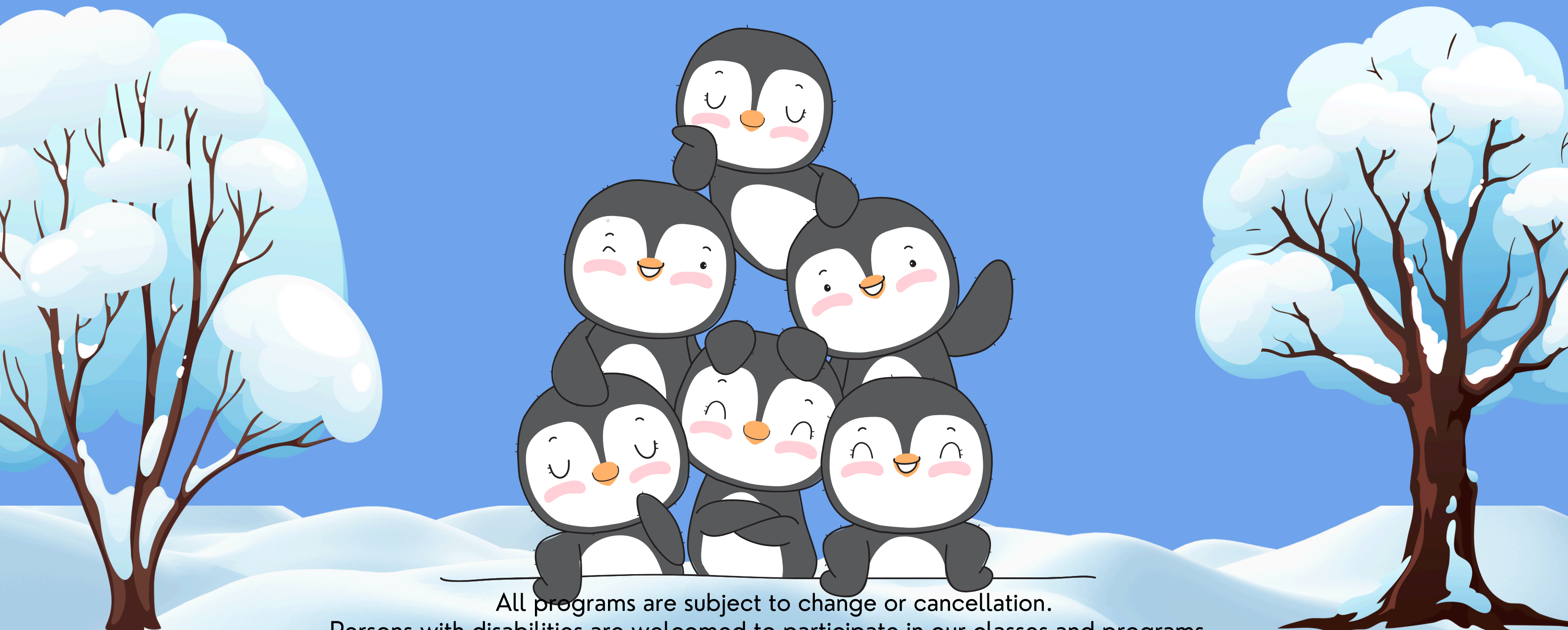


WINTER

Brochure

CLASSES RUN FROM:

JANUARY 4, 2025 – MARCH 29, 2025



All programs are subject to change or cancellation.

Persons with disabilities are welcomed to participate in our classes and programs.

Reasonable accommodations will be made with prior arrangements. Please be aware that some accommodations may take 30 days or longer.

Please submit your request for an accommodation as soon as possible.

Refund policy:

A 15% administrative fee will be assessed by the City of Los Angeles Department of Recreation and Parks for any patron granted a refund.

No refunds or credits for missed days.



CITY OF LOS ANGELES DEPARTMENT OF RECREATION AND PARKS

OAKWOOD RECREATION CENTER



767 CALIFORNIA AVE, / VENICE CA, 90291 / 310-452-7479
OAKWOOD.RECREATIONCENTER@LACITY.ORG

Kiddy Krafts

WHEN: TUESDAYS

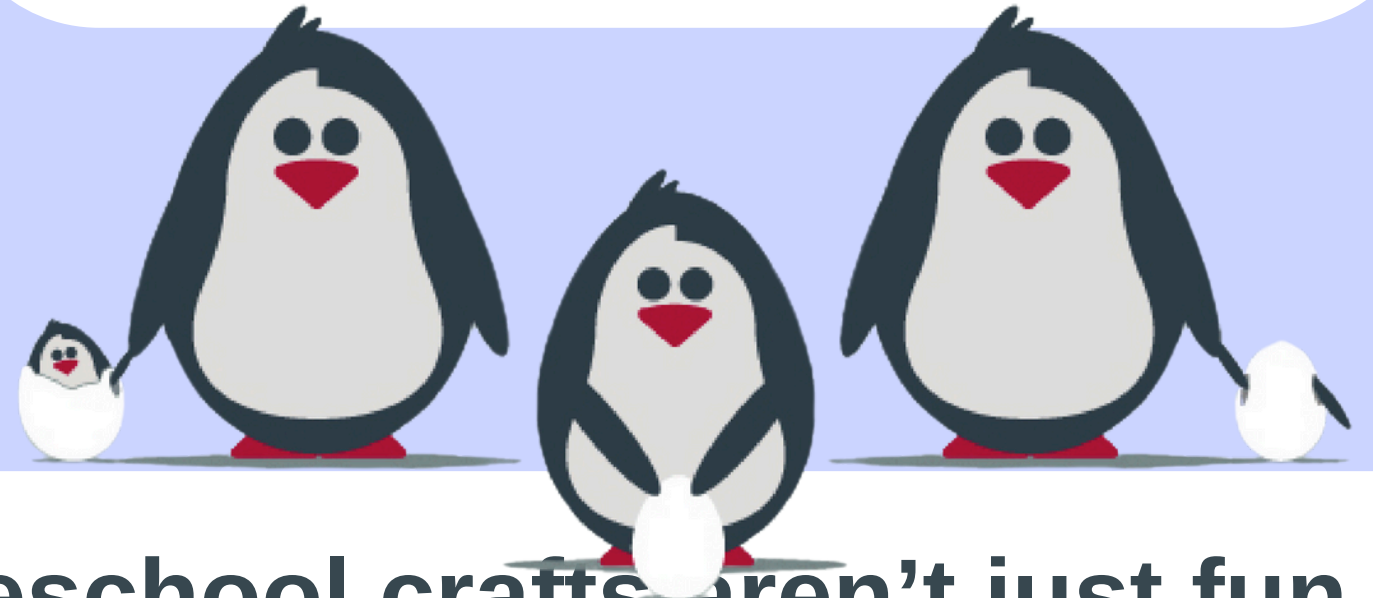
TIME: 10:30AM-11:15AM

AGES: 2-4

DATES: 1/14-3/4

FEE: \$50 FOR 8 WEEKS

****Adult is required to stay during the class**.**



Preschool crafts aren't just fun or cute. They serve a purpose. This class will teach children how to follow steps in a process, work on fine motor skills and learn about shapes, colors, numbers and letters.

REGISTER NOW!

[@laparks.org](https://laparks.org)



All programs are subject to change or cancellation.

Persons with disabilities are welcomed to participate in our classes and programs.

Reasonable accommodations will be made with prior arrangements. Please be aware that some accommodations may take 30 days or longer. Please submit your request for an accommodation as soon as possible.

Refund policy:

A 15% administrative fee will be assessed by the City of Los Angeles Department of Recreation and Parks for any patron granted a refund.

No refunds or credits for missed days.





CITY OF LOS ANGELES DEPARTMENT OF RECREATION AND PARKS

OAKWOOD RECREATION CENTER



767 CALIFORNIA AVE, / VENICE CA, 90291 / 310-452-7479
OAKWOOD.RECREATIONCENTER@LACITY.ORG

RUN, SKIP, JUMP PLAYTIME

COME ON IN AND STOP BY TO HAVE
SOME STRUCTURED FREE TIME.
WE'LL OFFER A WIDE RANGE OF FUN
PLAYTIME FAVORITES FOR THE LITTLE
ONE TO GO CRAZY WITH.

Drop-ins are welcome!!!

\$10 a class

WHEN: THURSDAYS

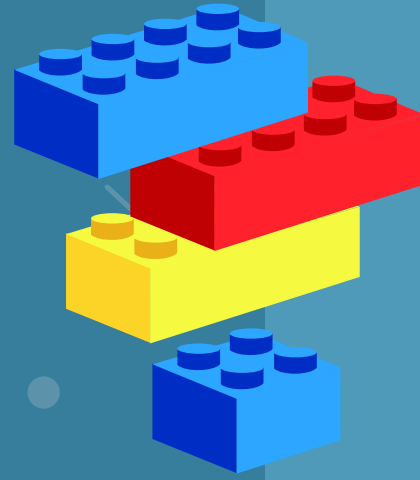
TIME: 10:30AM-11:15AM

AGES: 1-5

DATES: 1/16-3/6

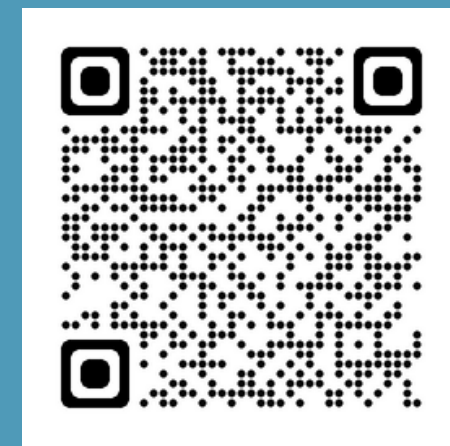
FEE: \$50 FOR 8 WEEKS

****Adult is required to stay during the class**.**



REGISTER NOW!

@laparks.org



YAYYYY



All programs are subject to change or cancellation.
Persons with disabilities are welcomed to participate in our classes and programs.
Reasonable accommodations will be made with prior arrangements. Please be aware that some accommodations may take 30 days or longer. Please submit your request for an accommodation as soon as possible.

Refund policy:

A 15% administrative fee will be assessed by the City of Los Angeles Department of Recreation and Parks for any patron granted a refund.
No refunds or credits for missed days.



CITY OF LOS ANGELES DEPARTMENT OF RECREATION AND PARKS

OAKWOOD RECREATION CENTER



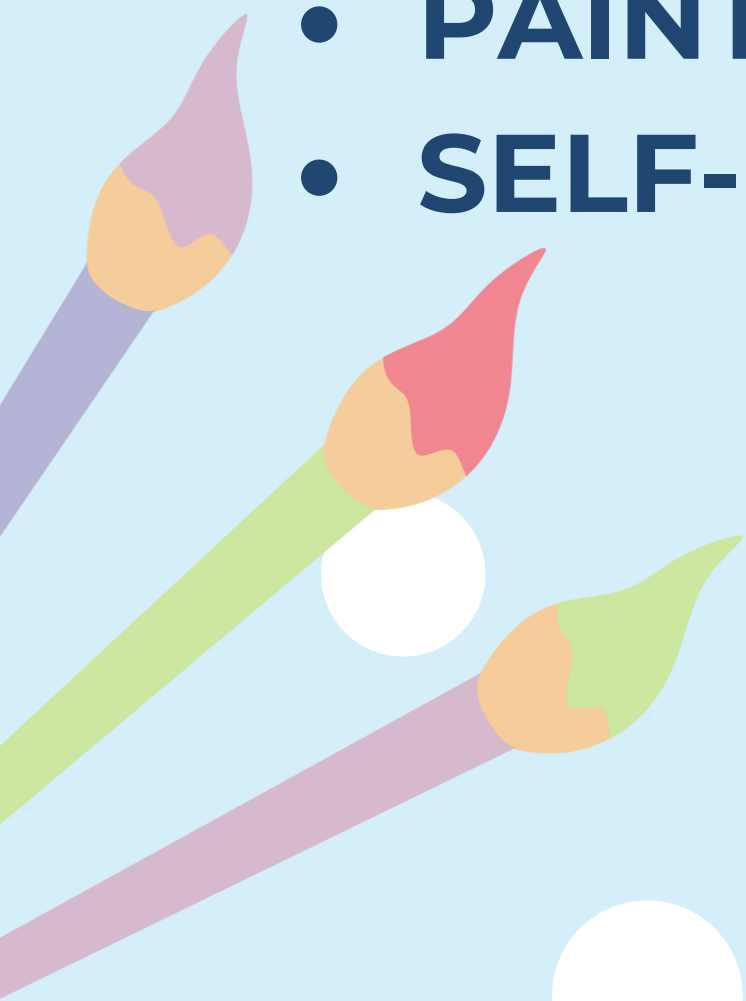
767 CALIFORNIA AVE, / VENICE CA, 90291 / 310-452-7479
OAKWOOD.RECREATIONCENTER@LACITY.ORG

TINY TYKES

Books Brushes

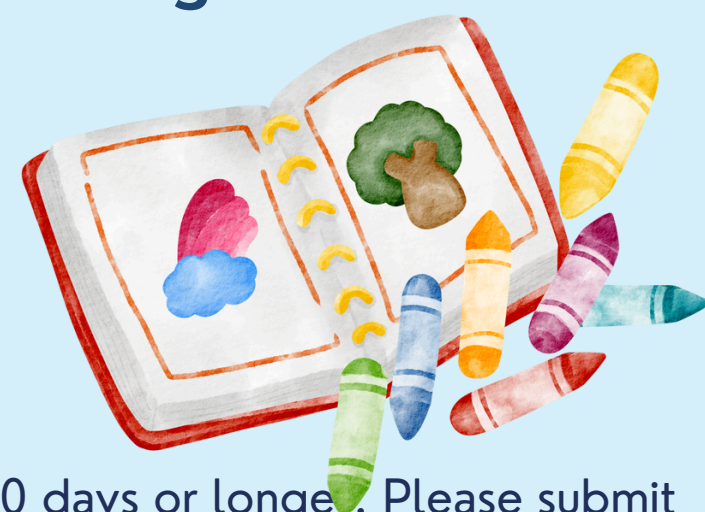


- CREATIVITY DEVELOPMENT
- STORY TELLING
- DRAWING
- PAINTING
- SELF-EXPRESSION



WHEN: FRIDAYS
TIME: 10:30AM-11:15AM
AGES: 2-5
DATES: 1/17-3/7
FEE: \$50 FOR 8 WEEKS

****Adult is required to stay during the class**.**



All programs are subject to change or cancellation.
 Persons with disabilities are welcomed to participate in our classes and programs.
 Reasonable accommodations will be made with prior arrangements. Please be aware that some accommodations may take 30 days or longer. Please submit your request for an accommodation as soon as possible.

Refund policy:

A 15% administrative fee will be assessed by the City of Los Angeles Department of Recreation and Parks for any patron granted a refund.
 No refunds or credits for missed days.



CITY OF LOS ANGELES DEPARTMENT OF RECREATION AND PARKS

OAKWOOD RECREATION CENTER



767 CALIFORNIA AVE, / VENICE CA, 90291 / 310-452-7479
OAKWOOD.RECREATIONCENTER@LACITY.ORG

LITTLE CHEF'S

Cooking CLASS

IN THIS COOKING CLASS, KIDS WILL LEARN HOW TO PREPARE THE KITCHEN, READ RECIPES, GET INGREDIENTS READY, AND ENHANCE THEIR COOKING SKILLS



REGISTER NOW!

@laparks.org



WHEN: TUESDAYS
TIME: 4:00PM-5:00PM
AGES: 5-12
DATES: 1/14-3/4
FEE: \$50 FOR 8 WEEKS



All programs are subject to change or cancellation.
Persons with disabilities are welcomed to participate in our classes and programs.
Reasonable accommodations will be made with prior arrangements. Please be aware that some accommodations may take 30 days or longer. Please submit your request for an accommodation as soon as possible.

Refund policy:

A 15% administrative fee will be assessed by the City of Los Angeles Department of Recreation and Parks for any patron granted a refund.
No refunds or credits for missed days.

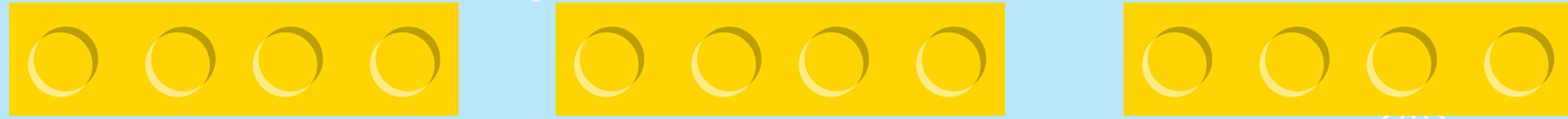


CITY OF LOS ANGELES DEPARTMENT OF RECREATION AND PARKS

OAKWOOD RECREATION CENTER



767 CALIFORNIA AVE, / VENICE CA, 90291 / 310-452-7479
OAKWOOD.RECREATIONCENTER@LACITY.ORG



BRICK BUILDING: A DUPLO EXPERIENCE



Show your creativity as you build your favorite creations!!! Each week will offer free play (with project ideas) and a show & tell at the end.

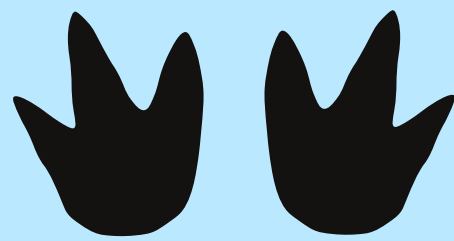
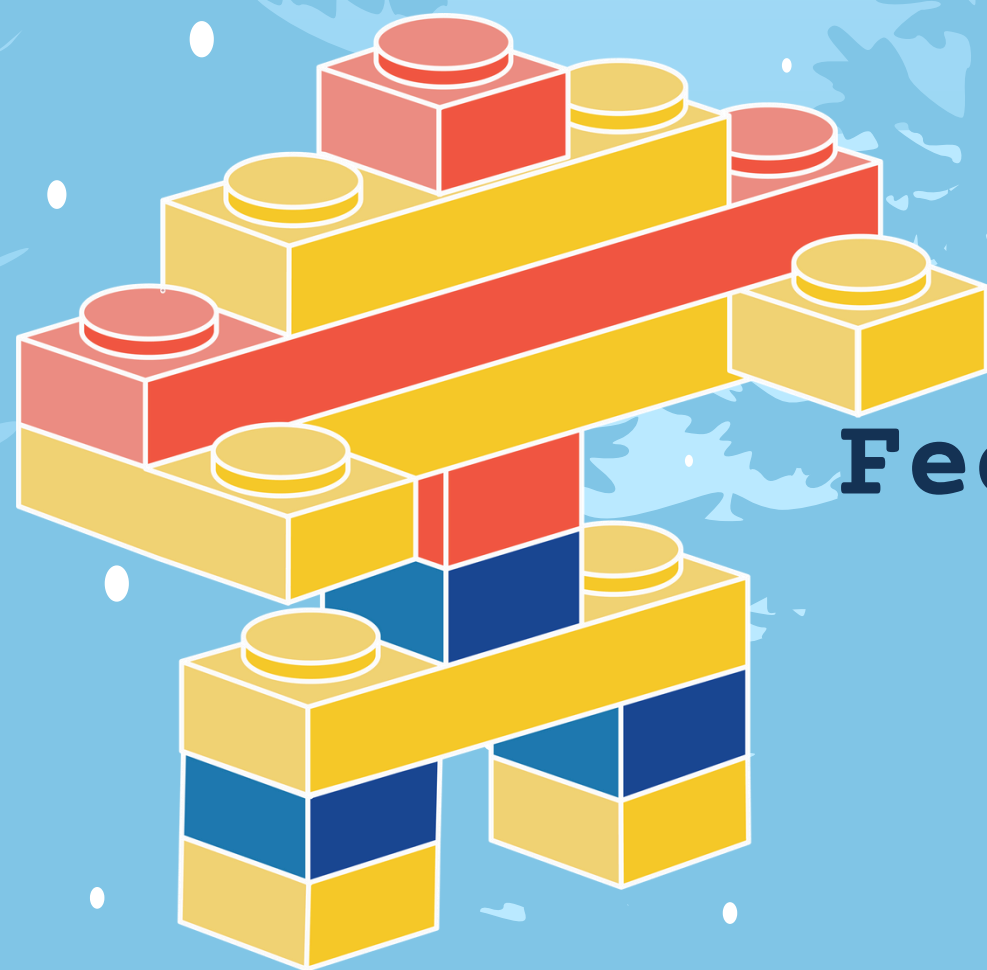


Ages: 5-9

Day: Wednesday

Times: 4pm-5pm

Dates: 1/16-3/6



Fee: \$50 for 8 weeks



All programs are subject to change or cancellation.

Persons with disabilities are welcomed to participate in our classes and programs.

Reasonable accommodations will be made with prior arrangements. Please be aware that some accommodations may take 30 days or longer. Please submit your request for an accommodation as soon as possible.

Refund policy:

A 15% administrative fee will be assessed by the City of Los Angeles Department of Recreation and Parks for any patron granted a refund. No refunds or credits for missed days.



CITY OF LOS ANGELES DEPARTMENT OF RECREATION AND PARKS

OAKWOOD RECREATION CENTER



767 CALIFORNIA AVE, / VENICE CA, 90291 / 310-452-7479
OAKWOOD.RECREATIONCENTER@LACITY.ORG

Intr To Drawing



Introducing kids to think creatively, collaborate, and learn to choose & hone their art skills in different mediums.

Ages:
5-10

Days/Time:
Fridays
4pm-4:45pm

Fees:
\$50 for 8 weeks

Class runs from: 1/17-3/7

Register Now
[@laparks.org](http://laparks.org)



All programs are subject to change or cancellation.
Persons with disabilities are welcomed to participate in our classes and programs.
Reasonable accommodations will be made with prior arrangements. Please be aware that some accommodations may take 30 days or longer. Please submit your request for an accommodation as soon as possible.

Refund policy:

A 15% administrative fee will be assessed by the City of Los Angeles Department of Recreation and Parks for any patron granted a refund.
No refunds or credits for missed days.



CITY OF LOS ANGELES DEPARTMENT OF RECREATION AND PARKS

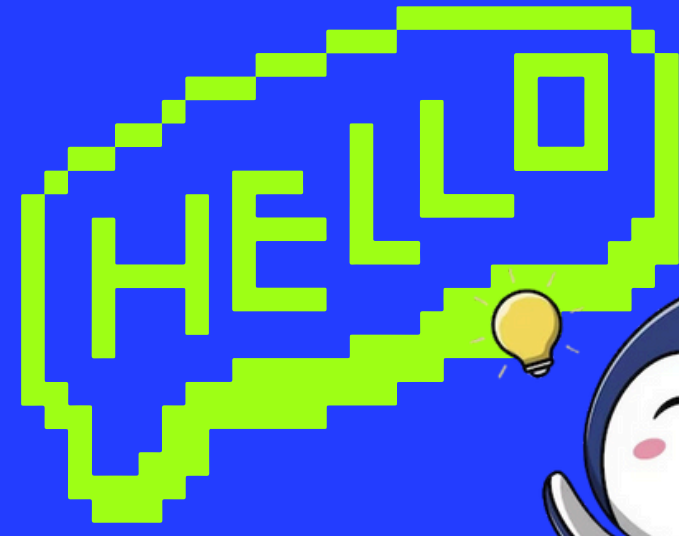
OAKWOOD RECREATION CENTER



767 CALIFORNIA AVE, / VENICE CA, 90291 / 310-452-7479
OAKWOOD.RECREATIONCENTER@LACITY.ORG

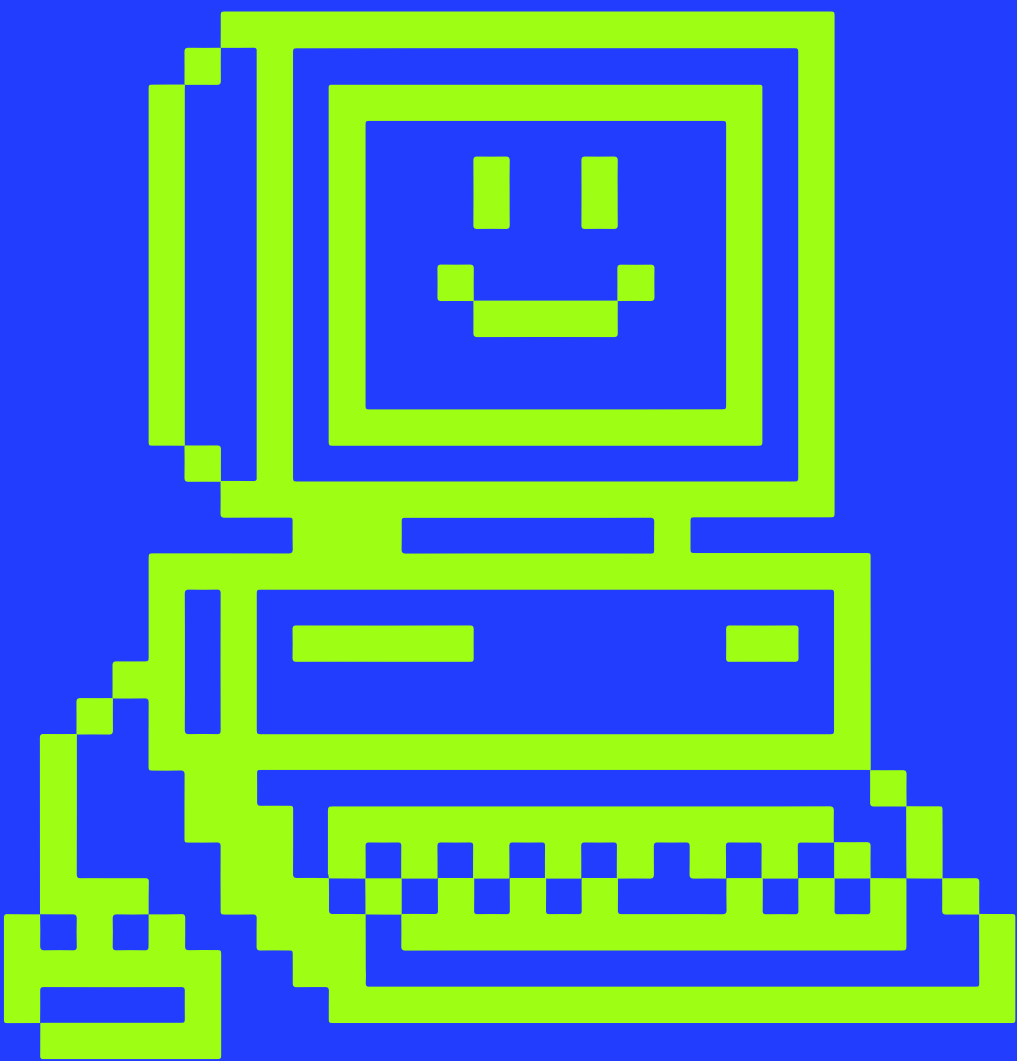
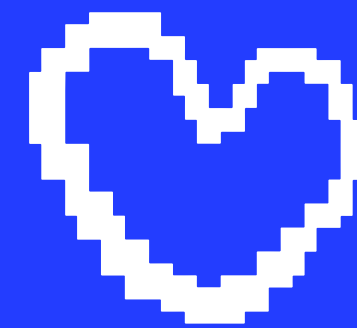


Intro to



Graphic

DESIGN



EXPLORE YOUR CREATIVITY THROUGH A GRAPHIC DESIGN COURSE SUITABLE FOR ALL SKILL LEVELS.

COURSE INFORMATION

- AGES: 7-12
- DAYS: FRIDAYS
- TIME: 5PM-6PM



CLASSES RUN FROM:

1/17-3/7

\$50
FOR 8 WEEKS

All programs are subject to change or cancellation.

Persons with disabilities are welcomed to participate in our classes and programs.

Reasonable accommodations will be made with prior arrangements. Please be aware that some accommodations may take 30 days or longer.

Please submit your request for an accommodation as soon as possible.

Refund policy:

A 15% administrative fee will be assessed by the City of Los Angeles Department of Recreation and Parks for any patron granted a refund.

No refunds or credits for missed days.



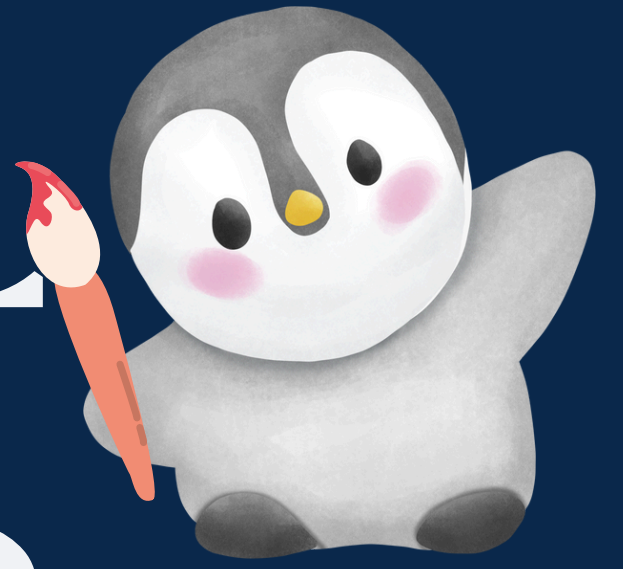
CITY OF LOS ANGELES DEPARTMENT OF RECREATION AND PARKS

OAKWOOD RECREATION CENTER



767 CALIFORNIA AVE, / VENICE CA, 90291 / 310-452-7479
OAKWOOD.RECREATIONCENTER@LACITY.ORG

Painting



With



WATERCOLOR

Join us to learn the watercolor technique

Ages: 5-9

Day: Thursdays

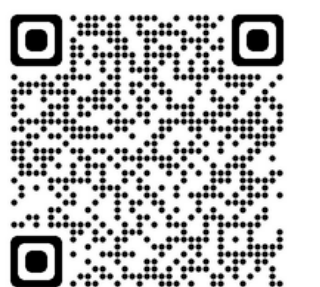
Times: 4pm-5pm

Dates: 1/16-3/6

Fee: \$50 for 8 weeks



REGISTER NOW!
[@laparks.org](https://www.laparks.org)



All programs are subject to change or cancellation.
Persons with disabilities are welcomed to participate in our classes and programs.
Reasonable accommodations will be made with prior arrangements. Please be aware that some accommodations may take 30 days or longer.
Please submit your request for an accommodation as soon as possible.
Refund policy:
A 15% administrative fee will be assessed by the City of Los Angeles Department of Recreation and Parks for any patron granted a refund.
No refunds or credits for missed days.



CITY OF LOS ANGELES DEPARTMENT OF RECREATION AND PARKS

OAKWOOD RECREATION CENTER



767 CALIFORNIA AVE, / VENICE CA, 90291 / 310-452-7479
OAKWOOD.RECREATIONCENTER@LACITY.ORG



Beginning Gymnastics

Ages: 5-12



Day: Wednesdays

Times: 4pm-5pm (Beginner)

5pm-6pm (Intermediate)

Dates: 1/15-3/5

Fee: \$50 for 8 weeks



This fun class will focus on the basics of gymnastics. Learn basic rolls, tumbling, stretching, and other fundamental skills.



All programs are subject to change or cancellation.

Persons with disabilities are welcomed to participate in our classes and programs.

Reasonable accommodations will be made with prior arrangements. Please be aware that some accommodations may take 30 days or longer.

Please submit your request for an accommodation as soon as possible.

Refund policy:

A 15% administrative fee will be assessed by the City of Los Angeles Department of Recreation and Parks for any patron granted a refund.

No refunds or credits for missed days.



CITY OF LOS ANGELES DEPARTMENT OF RECREATION AND PARKS

OAKWOOD RECREATION CENTER



767 CALIFORNIA AVE, / VENICE CA, 90291 / 310-452-7479
OAKWOOD.RECREATIONCENTER@LACITY.ORG



Discover the Magic of Gardening



Sow



The first stage is sowing the seeds into the soil. This is the first step where the seeds are planted in a place that suits the soil and weather conditions.



Ages: 5-12
Day: Tuesdays
Times: 2:30pm-3:15pm
Dates: 1/14-3/4
Fee: \$50 for 8 weeks

REGISTER NOW!

[@laparks.org](https://laparks.org)

Plant

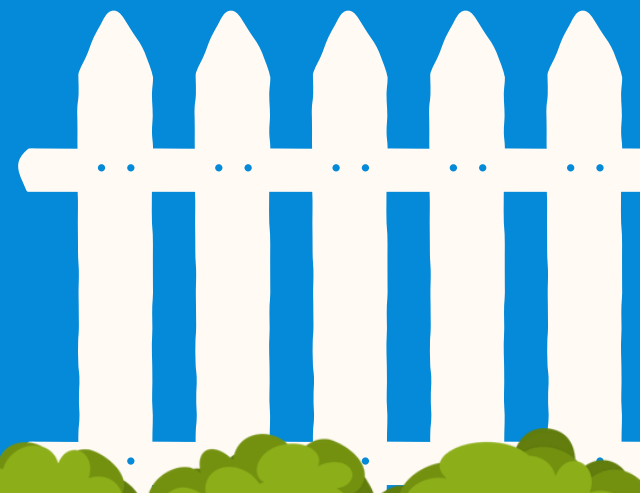
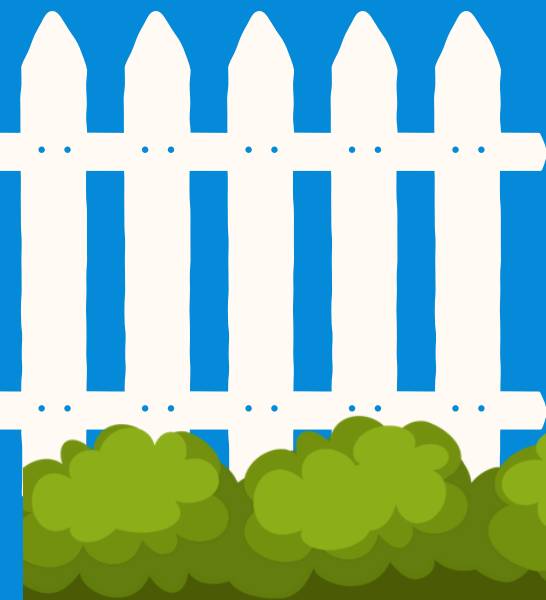


Once the seeds are planted, the plants begin to grow. At this stage, plants require care such as watering, fertilizing and maintenance so that they can grow well.



Reap

This happens when the plant has grown and developed well, and the fruit, seeds or other plant products are ready to be harvested and used.



All programs are subject to change or cancellation.
Persons with disabilities are welcomed to participate in our classes and programs.
Reasonable accommodations will be made with prior arrangements. Please be aware that some accommodations may take 30 days or longer.
Please submit your request for an accommodation as soon as possible.

Refund policy:
A 15% administrative fee will be assessed by the City of Los Angeles Department of Recreation and Parks for any patron granted a refund.
No refunds or credits for missed days.



CITY OF LOS ANGELES DEPARTMENT OF RECREATION AND PARKS

OAKWOOD RECREATION CENTER



767 CALIFORNIA AVE, / VENICE CA, 90291 / 310-452-7479
OAKWOOD.RECREATIONCENTER@LACITY.ORG

GPLA
Girls Play Los Angeles

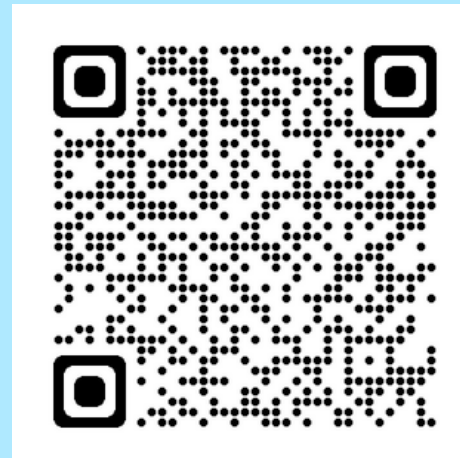


LET'S CHEER! LETS DANCE!



REGISTER NOW!

@laparks.org



Cheer Ages: 6-15

Time : 4pm-5pm

Day: Fridays

Fee: \$10

Dates: 1/17-3/7

Dance Ages: 6-15

Time : 5pm-6pm

Day: Fridays

Fee: \$10

Dates: 1/17-3/7

Sign up and learn to cheer for your school teams, or just because you love it!

Learn new cheers, stunts, and drills!



All programs are subject to change or cancellation.
Persons with disabilities are welcomed to participate in our classes and programs.
Reasonable accommodations will be made with prior arrangements. Please be aware that some accommodations may take 30 days or longer. Please submit your request for an accommodation as soon as possible.

Achieving gender equity through a continuous commitment to girls and women in sports.

Refund policy:

A 15% administrative fee will be assessed by the City of Los Angeles Department of Recreation and Parks for any patron granted a refund.
No refunds or credits for missed days.



CITY OF LOS ANGELES DEPARTMENT OF RECREATION AND PARKS

OAKWOOD RECREATION CENTER



767 CALIFORNIA AVE, / VENICE CA, 90291 / 310-452-7479
OAKWOOD.RECREATIONCENTER@LACITY.ORG

PLAYLA

JUDO

DAY: THURSDAYS

DATES: 1/16 - 3/6

TIME: 6:30 PM - 7:30 PM

AGES: 5 - 15

FEE: \$10

***AN EXCELLENT BEGINNERS CLASS
THAT TEACHES BASIC JUDO
TECHNIQUES & IMPROVES SELF
CONFIDENCE***



All programs are subject to change or cancellation. Persons with disabilities are welcomed to participate in our classes and programs. Reasonable accommodations will be made with prior arrangements. Please be aware that some accommodations may take 30 days or longer.

Please submit your request for an accommodation as soon as possible.

Achieving gender equity through a continuous commitment to girls and women in sports.

PlayLA Youth and Adaptive Youth Sports Program is made possible by the LA28 Olympic and Paralympic Games. Waivers available for those who qualify, ask for details.

Refund policy:

A 15% administrative fee will be assessed by the City of Los Angeles Department of Recreation and Parks for any patron granted a refund.

No refunds or credits for missed days.



CITY OF LOS ANGELES DEPARTMENT OF RECREATION AND PARKS

OAKWOOD RECREATION CENTER



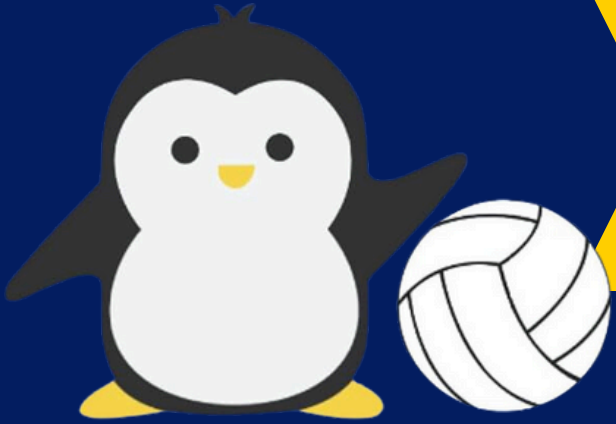
767 CALIFORNIA AVE, / VENICE CA, 90291 / 310-452-7479
OAKWOOD.RECREATIONCENTER@LACITY.ORG

GPLA

Girls Play Los Angeles

VOLLEYBALL CLINICS

JAN 13TH - MAR 17TH



Spikes, Sets, & Conditioning!

Prepare for your upcoming season or just get some extra reps in! These clinics are for beginners and experienced athletes alike!

Day: Monday

Time : 5:30pm-7pm

Day: Wednesday

Time:: 5:30pm-7:30pm

Fee: \$10

Dates: 1/13-3/17

REGISTER NOW

@laparks.org



All programs are subject to change or cancellation.

Persons with disabilities are welcomed to participate in our classes and programs.

Reasonable accommodations will be made with prior arrangements. Please be aware that some accommodations may take 30 days or longer.

Please submit your request for an accommodation as soon as possible.

Achieving gender equity through a continuous commitment to girls and women in sports.

Refund policy:

A 15% administrative fee will be assessed by the City of Los Angeles Department of Recreation and Parks for any patron granted a refund.

No refunds or credits for missed days.

Don't forget about these other fun and exciting programs, classes and events...

KAREN BASS - MAYOR

TRACI PARK - COUNCIL MEMBER, DISTRICT #11

RECREATION AND PARKS COMMISSIONERS

RENATA SIMRIL - PRESIDENT

LUIS SANCHEZ - VICE PRESIDENT

FIONA HUTTON, MARIE LLOYD, BENNY TRAN - MEMBERS

RECREATION AND PARKS EXECUTIVE STAFF

JIMMY KIM - GENERAL MANAGER

MATTHEW RUDNICK - EXECUTIVE OFFICER

CHINYERE STONEHAM - ASSISTANT GENERAL MANAGER

SONYA YOUNG JIMENEZ - SUPERINTENDENT, VENICE BEACH & WEST REGION

RAMON CERRILLOS - PRINCIPAL RECREATION SUPERVISOR II

JUAN SOTO, PRINCIPAL RECREATION SUPERVISOR I

MELODY VALENZUELA - RECREATION SUPERVISOR, VIEWPOINT DISTRICT

JOHN GAVILAN - FACILITY DIRECTOR



Follow us on
Instagram

@oakwood_rec_center to stay updated on current programming and events at the Recreation Center.

WINTER CAMP 2025
 Week 1- Dec. 16th-20th
 Week 2- Dec. 23rd -27th
 Week 3- Dec. 30th-Jan 3rd
 **No camp 12/25 or 1/1/25

WINTER FESTIVAL
 DECEMBER 21st
 11:00 AM - 1:00 PM

CLASS PARKS TEEN PROGRAM

CLASS PARKS HEADQUARTERS
 3900 CHEVY CHASE DRIVE
 LOS ANGELES, CA 90039
 (818) 243-2490

Register @ laparks.org



All programs are subject to change or cancellation.

Persons with disabilities are welcomed to participate in our classes and programs.

Reasonable accommodations will be made with prior arrangements.

Please be aware that some accommodations may take 30 days or longer.

Please submit your request for an accommodation as soon as possible.

Achieving gender equity through a continuous commitment to girls and women in sports.

PlayLA Youth and Adaptive Youth Sports Program is made possible by the LA28 Olympic and Paralympic Games. Waivers available for those who qualify, ask for details.

Refund policy:

A 15% administrative fee will be assessed by the City of Los Angeles Department of Recreation and Parks for any patron granted a refund. No refunds or credits for missed days.