

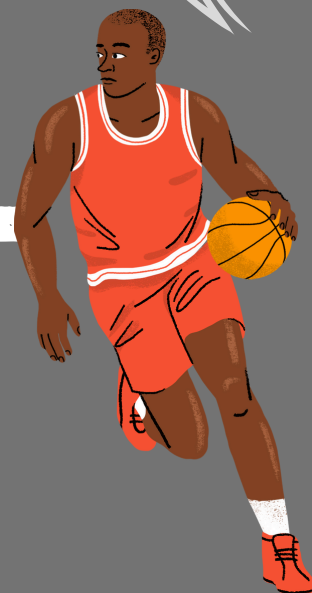


LAKE STREET COMMUNITY CENTER



BASKETBALL

Winter League 2025



FEE \$10

REGISTRATION STARTS

MONDAY NOVEMBER 4, 2024

Includes Uniform, Medal & Officials fees

Volunteer Coaches Needed!

Co-Rec League

Divisions	Year Born
Rookies	2018-2019
Peewees	2016-2017
Minors	2014-2015
Majors	2012-2013
Juniors	2009-2010-2011

Evaluations
12/14 @ 9am
12/14 @ 9 am
12/14 @ 10am
12/14 @ 11am
12/14 @ 11am



Girls League

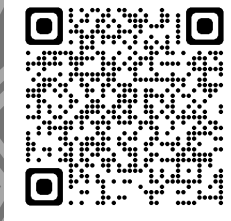
Divisions	Year Born	Evaluations
Minors	2014-2015	12/14 @ 10am
Majors	2012-2013	12/14 @ 11am
Juniors	2009, 2010, 2011	12/14 @ 11am

Games Begin in January 2025

Age Determined as of January 1, 2025
 Payment by exact cash/money order, Visa/Mastercard/ checks payable to: City of LA
 No refunds unless league is canceled.
 Program is subject to change or cancel without notice

www.laparks.org/lake-street-community

Achieving Gender Equality Through a Continuous Commitment to Girls & Women in Sports
 "Persons with disabilities are welcomed to participate in our classes and programs. Reasonable accommodations will be made with prior arrangements. Please be aware that some accommodations may take 30 days or longer. Please submit your request for an accommodation as soon as possible."



227 N. Lake St, LA, CA 90026

Call: 213-207-2196

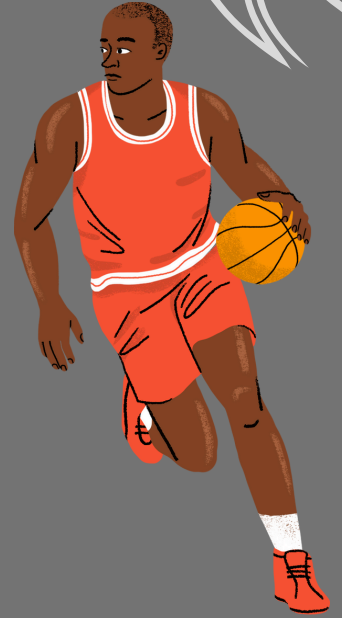
Email: lakestreet.communitycenter@lacity.org





Liga de BALONCESTO

Invierno 2025



TARIFA \$10

Incluye Uniforme, trofeo & Tarifa del árbitro

REGISTRACION COMIENZA
LUNES 4 DE NOVIEMBRE DEL 2024

Se Necesitan Entrenadores Voluntarios!

Co-Rec League

<u>Divisions</u>	<u>Year Born</u>
Rookies	2018-2019
Peewees	2016-2017
Minors	2014-2015
Majors	2012-2013
Juniors	2009-2010-2011

Evaluations

12/14 @ 9am
12/14 @ 9 am
12/14 @ 10am
12/14 @ 11am
12/14 @ 11am



Liga de Niñas

<u>Divisiones</u>	<u>Edad</u>	<u>Evaluaciones</u>
Minors	2014-2015	12/14 @ 10am
Majors	2012-2013	12/14 @ 11am
Juniors	2009, 2010, 2011	12/14 @ 11am

Juegos comienzan en ENERO 2025

Edad determinada desde 1 de enero del 2025

Pago en efectivo/money order, Visa/Mastercard/ cheque pagable a: City of LA

No hay reembolsos a menos que se cancele la liga. El programa está sujeto a cambios o cancelaciones sin previo aviso.

www.laparks.org/lake-street-community

Logrando la igualdad de género a través de un compromiso continuo con niñas y mujeres en los deportes.
Personas con discapacidad son bienvenidas a participar en nuestras clases y programas.
Acomodaciones razonables serán hechas con arreglo previo. Tenga en cuenta que algunas adaptaciones pueden tardar 30 días o más. Por favor, envíe su solicitud de adaptación lo antes posible".
Las clases son sujetas a cambios o cancelación sin aviso previo



227 N. Lake St, LA, CA 90026

Call: 213-207-2196

Email: lakestreet.communitycenter@lacity.org

