

CITY OF LOS ANGELES
DEPARTMENT OF RECREATION AND PARKS



Fall 2024



HIGHLAND PARK
RECREATION CENTER



6150 Piedmont Avenue, L.A., CA 90042
Phone (213) 847-4876 or (213) 847-4875



SCAN ME! =]
for programs

EMAIL: HighlandPark.RecreationCenter@lacity.org

M-F: 10:00am-9:00pm—Sat: 9:00am-4:00pm—S: CLOSED

All classes and programs are subject to cancellation.

All refunds will be assessed a 15% fee.

**ALL CLASSES AND PROGRAMS ARE SUBJECT TO CHANGE OR CANCELLATION. ALL REFUNDS WILL BE ASSESSED A 15% FEE.
"PERSONS WITH DISABILITIES ARE WELCOMED TO PARTICIPATE IN OUR CLASSES AND PROGRAMS. REASONABLE ACCOMMODATIONS WILL BE MADE WITH PRIOR ARRANGEMENTS. PLEASE BE AWARE THAT SOME ACCOMMODATIONS MAY TAKE 30 DAYS OR LONGER. PLEASE SUBMIT YOUR REQUEST FOR AN ACCOMMODATION AS SOON AS POSSIBLE."**



FACILITY INFORMATION



UPCOMING CENTER ACTIVITIES PLEASE TAKE NOTE



ALL CLASSES AND PROGRAMS ARE SUBJECT TO CHANGE OR CANCELLATION. ALL REFUNDS WILL BE ASSESSED A 15% FEE.
"PERSONS WITH DISABILITIES ARE WELCOMED TO PARTICIPATE IN OUR CLASSES AND PROGRAMS. REASONABLE ACCOMMODATIONS WILL BE MADE WITH PRIOR ARRANGEMENTS. PLEASE BE AWARE THAT SOME ACCOMMODATIONS MAY TAKE 30 DAYS OR LONGER. PLEASE SUBMIT YOUR REQUEST FOR AN ACCOMMODATION AS SOON AS POSSIBLE.

Fall Class Registration: August 26, 2024

Fall Classes Begin: October 7, 2024

Fall Classes End: December 21, 2024

No classes on: October 14th, November 11th, November 28th & 29th



FALL VIBES

2024 FALL FACILITY CLOSURE DATES

October 14th, 2024 Indigenous Day

November 11th, 2024 Veteran's Day

November 28th & 29th, 2024 Thanksgiving

Reference Numbers

| | |
|-------------------------|----------------|
| Citywide Aquatics | (323) 906-7953 |
| Park Film Office | (323) 644-6220 |
| Office of Public Safety | (213) 978-4670 |
| Park Rangers | (323) 644-6661 |
| Municipal Sports Office | (818) 765-0284 |
| City of LA Information | 311 |

In case of Emergency Call:
Northeast Community Police Station
(323) 561-3211



Metro North Parks

| | |
|------------------------------|-----------------|
| Carlin G. Smith RC | (323) 225-4960 |
| Eagle Rock RC | (323) 257-6948 |
| Eagle Rock Youth Center | (323) 341-5658 |
| El Sereno RC | (323) 225-3517 |
| El Sereno SCC | (323) 222-2040 |
| Highland Park RC | (213) 847-4876 |
| Highland Park SCC | (323) 256-6867 |
| Lincoln Heights RC | (323) 225-2838 |
| Lincoln Heights SCC | (323) 225-9339 |
| Lincoln Heights Youth Center | (323) 226-1401 |
| Lincoln Park | (213) 847-1726 |
| Lincoln Park SCC | (213) 847-1727 |
| Montecito Heights RC | (213) 485-5148 |
| Montecito Heights SCC | (213) 485-8550 |
| Ramona Hall | (323) 276- 3021 |
| Rose Hills RC | (323) 225-0450 |
| Yosemite RC | (323) 257-1644 |

On-Line and In-Person Registration

Monday, July 29, 2024

Online Registration Website

www.laparks.org/reccenter/highland

Refund Policy

Full refunds are issued when the Recreation Center cancels the activity. A 15% cancellation fee per participant is assessed for all refunds. Changes and transfers per class, sports league or day camp registration may be assessed additional fees. After the first day of a session, the Recreation Center issues a partial refund to patrons withdrawing from the activity.

Online registration must be done with a credit card only
Credit Cards Accepted

IMPORTANT INFORMATION

- All classes are on a first come first served basis.
- Participants must have reached the minimum age for classes by the first day.
- Classes will not be in session on Holidays Observed by the City of Los Angeles.
- Any class that is cancelled by Highland Park Recreation Center Staff will be made up at the end of the session. Class will not made up if the student is absent; including illnesses.

Payment Process

Full payment for all classes is due at the time of registration. Methods of payment accepted:

Exact Cash, Debit Card and Checks

Credit Cards are the Preferred method of payment

Please make all checks payable to:

City of Los Angeles

A Collection Fee will be charged for each check returned by Bank.

TAX ID #: PX95-6000735





Highland Park Recreation Center

After School Program

**\$80 Monthly Fee
or \$25 weekly fee**

**2024-2025 SCHOOL
YEAR**

Registration Fee: \$25

**GRADES
K-5**

WHAT WE PROVIDE

- English & Spanish Homework Help
- Arts and Crafts
- Sports
- Games
- Snack

PICK-UPS

pick-ups available with 3 or more registrations from: Garvanza Elementary, Aldama Elementary, Monte Vista Elementary.

Program Hours

**Mondays, Wednesdays, Thursdays
and Fridays from 2:30PM to 6:00PM**

Tuesday from 1:30PM to 6:00PM

Ages: 5 to 12 years old

**Registration begins:
August 2nd**

For more information & to get registration form, please visit our site:



**SCAN ME! =]
AND ADD ONLINE**

HIGHLANDPARK.RECREATIONCENTER@LACITY.ORG

CALL : (213) 847-4875

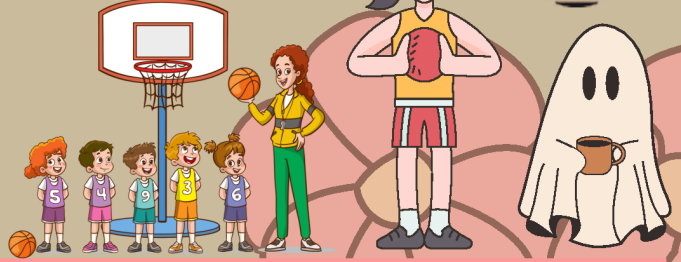
"PERSONS WITH DISABILITIES ARE WELCOMED TO PARTICIPATE IN OUR CLASSES AND PROGRAMS. REASONABLE ACCOMMODATIONS WILL BE MADE WITH PRIOR ARRANGEMENTS. PLEASE BE AWARE THAT SOME ACCOMMODATIONS MAY TAKE 30 DAYS OR LONGER. PLEASE SUBMIT YOUR REQUEST FOR AN ACCOMMODATION AS SOON AS POSSIBLE."



HIGHLAND PARK RECREATION CENTER FALL 2024 SPORTS LEAGUES



SCAN ME! =]
for programs



CLASSES RUN FOR 8 WEEKS

FEE \$10

CLASSES BEGIN ON THE WEEK OF OCTOBER 9 TO DECEMBER 5

| CLASS | AGE | DAY | TIME | FEE | SESSION |
|------------------------|------|-----------|-----------|------|-------------|
| JUDO | 7-14 | TUESDAY | 6PM-7PM | \$10 | 10/08-11/26 |
| DODGEBALL | 5-9 | WEDNESDAY | 4PM-5PM | \$10 | 10/09-11/27 |
| JUDO | 7-14 | THURSDAY | 6PM-7PM | \$10 | 10/10-12/05 |
| BASKETBALL SKILLS | 5-8 | SATURDAY | 9AM-10AM | \$10 | 10/12-11/30 |
| GPLA BASKETBALL SKILLS | 5-6 | SATURDAY | 10AM-11AM | \$10 | 10/12-11/30 |
| GPLA BASKETBALL SKILLS | 7-8 | SATURDAY | 11AM-12PM | \$10 | 10/12-11/30 |



CLINICS ARE A 3 DAY CLASS

FEE \$10

CLINICS BEGIN ON THE WEEK OF DECEMBER 4 TO DECEMBER 28

| CLINIC | AGE | DAY | TIME | FEE | SESSION |
|-----------------|-------|-----------|---------------|------|---------------------|
| GPLA BASKETBALL | 12-15 | WEDNESDAY | 5:30PM-7:30PM | \$10 | 12/04, 12/11, 12/18 |
| GPLA BASKETBALL | 9-11 | SATURDAY | 11AM-1PM | \$10 | 12/07, 12/14, 12/21 |
| BASKETBALL | 8-10 | FRIDAY | 5PM-7PM | \$10 | 12/06, 12/13, 12/20 |
| BASKETBALL | 5-8 | SATURDAY | 9AM-11AM | \$10 | 12/14, 12/21, 12/28 |

ALL CLASSES AND PROGRAMS ARE SUBJECT TO CHANGE OR CANCELLATION. ALL REFUNDS WILL BE ASSESSED A 15% FEE.

*PERSONS WITH DISABILITIES ARE WELCOMED TO PARTICIPATE IN OUR CLASSES AND PROGRAMS. REASONABLE ACCOMMODATIONS WILL BE MADE WITH PRIOR ARRANGEMENTS. PLEASE BE AWARE THAT SOME ACCOMMODATIONS MAY TAKE 30 DAYS OR LONGER. PLEASE SUBMIT YOUR REQUEST FOR AN ACCOMMODATION AS SOON AS POSSIBLE.





HIGHLAND PARK RECREATION CENTER

FALL 2024 SPORTS LEAGUES



SCAN ME! [=] for programs



COED Basketball Leagues *8 week League League Begins October 5th to November 23rd

| DIVISION | AGE | FEE | EVALUATION |
|----------|-------|------|----------------------------------|
| Major | 11-12 | \$10 | September 14th, Saturday 11am |
| Junior | 13-15 | \$10 | September 14th, Saturday 11:45am |

Little Dribblers Basketball League *8 week League League Begins October 5th to November 23rd



| DIVISION | AGE | FEE | EVALUATION |
|------------------|-----|------|---------------|
| Little Dribblers | 3-4 | \$10 | No Evaluation |



COED Soccer League *8 week League League Begins October 5th to November 23rd

| DIVISION | AGE | FEE | EVALUATION |
|----------|-------|------|----------------------------------|
| ROOKIES | 5-6 | \$10 | No Evaluation |
| PEEWEE | 7-8 | \$10 | September 14th, Saturday 9:30am |
| MINOR | 9-10 | \$10 | September 14th, Saturday 10:15am |
| Major | 11-12 | \$10 | September 14th, Saturday 11am |

GPLA Volleyball Leagues *8 week League League Begins October 5th to November 23rd



| DIVISION | AGE | FEE | EVALUATION |
|----------|-------|------|-------------------------------|
| MINOR | 9-10 | \$10 | September 9, Monday at 5pm |
| MAJOR | 11-12 | \$10 | September 9, Monday at 6pm |
| JUNIOR | 13-15 | \$10 | September 9, Monday at 7:30pm |



GPLA Basketball Leagues *8 week League League Begins October 5th to November 23rd

| DIVISION | AGE | FEE | EVALUATION |
|----------|-------|------|-----------------------------------|
| MINOR | 9-10 | \$10 | September 11, Wednesday at 5:30pm |
| MAJOR | 11-12 | \$10 | September 11, Wednesday at 6:30pm |
| JUNIOR | 13-15 | \$10 | September 11, Wednesday at 7:30pm |

GPLA Soccer Leagues *8 week League League Begins October 5th to November 23rd



| DIVISION | AGE | FEE | EVALUATION |
|----------|-------|------|-------------------------------|
| MINOR | 9-10 | \$10 | September 14, Saturday at 9am |
| Major | 11-12 | \$10 | September 14, Saturday at 9am |



GPLA Softball Leagues *8 week League League Begins October 5th to November 23rd

| DIVISION | AGE | FEE | EVALUATION |
|----------|-------|------|----------------------------|
| MINOR | 9-10 | \$10 | September 9, Monday at 5pm |
| Major | 11-12 | \$10 | September 9, Monday at 5pm |

ALL CLASSES AND PROGRAMS ARE SUBJECT TO CHANGE OR CANCELLATION. ALL REFUNDS WILL BE ASSESSED A 15% FEE.

*PERSONS WITH DISABILITIES ARE WELCOMED TO PARTICIPATE IN OUR CLASSES AND PROGRAMS. REASONABLE ACCOMMODATIONS WILL BE MADE WITH PRIOR ARRANGEMENTS. PLEASE BE AWARE THAT SOME ACCOMMODATIONS MAY TAKE 30 DAYS OR LONGER. PLEASE SUBMIT YOUR REQUEST FOR AN ACCOMMODATION AS SOON AS POSSIBLE.



6150 Piedmont Avenue, L.A., CA 90042

Phone (213) 847-4875 or (213) 847-4876

EMAIL: HighlandPark.RecreationCenter@lacity.org

M-F: 10:00am-9:00pm—SAT: 9:00am-4:30pm—S: CLOSED

HIGHLAND PARK RECREATION CENTER

ENRICH LA CLASSES

FALL 2024



SCAN ME! =] for programs



FREE CLASS

REGISTER NOW!

10 WEEK PROGRAM

SEPTEMBER 17TH , 2024 THROUGH DECEMBER 3RD, 2024

| Class | Age | Day | TIME | PROGRAM | STAFF | SESSION DATES | No Class |
|------------------|------|----------|---------|---------|---------|---------------|---------------|
| Acting in Motion | 5-8 | Tuesdays | 4pm-5pm | LA KIDS | Luciana | 9/17-12/3 | 10/29 & 11/26 |
| Acting in Motion | 9-15 | Tuesdays | 5pm-6pm | LA KIDS | Luciana | 9/17-12/3 | 10/29 & 11/26 |

****ACTING-IN-MOTION: IS A DRAMA CLASS WITH STRONG DANCE (MUSICAL THEATER AND HIP HOP) FUNDAMENTALS. IT IS LISTED IN RECTRAC AS AN ACTING/DRAMA CLASS.****

"PERSONS WITH DISABILITIES ARE WELCOMED TO PARTICIPATE IN OUR CLASSES AND PROGRAMS. REASONABLE ACCOMMODATIONS WILL BE MADE WITH PRIOR ARRANGEMENTS. PLEASE BE AWARE THAT SOME ACCOMMODATIONS MAY TAKE 30 DAYS OR LONGER. PLEASE SUBMIT YOUR REQUEST FOR AN ACCOMMODATION AS SOON AS POSSIBLE."



6150 Piedmont Avenue, L.A., CA 90042

Phone (213) 847-4876

EMAIL: HighlandPark.RecreationCenter@lacity.org

M-F: 10:00am-9:00pm—SAT: 9:00am-4:30pm—S: CLOSE

HIGHLAND PARK RECREATION CENTER

ADULT ZUMBA CLASS

JOIN NOW

| DAY | TIME | AGE | FEE |
|------------|-------|-----------|--------------|
| WEDNESDAYS | 7P-8P | 18 AND UP | \$25/MONTHLY |

PROGRAM IS SUBJECT TO CHANGE WITHOUT PRIOR NOTICE. REFUNDS WILL ONLY BE GIVEN IF PROGRAM IS CANCELLED.

Form of Payment: Exact Change, Credit Card, Checks



SCAN ME! =] FOR PROGRAMS

PERSONS WITH DISABILITIES ARE WELCOMED TO PARTICIPATE IN OUR CLASSES AND PROGRAMS. REASONABLE ACCOMMODATIONS WILL BE MADE WITH PRIOR ARRANGEMENTS. PLEASE BE AWARE THAT SOME ACCOMMODATIONS MAY TAKE 30 DAYS OR LONGER. PLEASE SUBMIT YOUR REQUEST FOR AN ACCOMMODATION AS SOON AS POSSIBLE.

City of Los Angeles Department of Recreation and Parks

6150 Piedmont Avenue, L.A., CA 90042

Phone (213) 847-4875 or (213) 847-4876

EMAIL: HighlandPark.RecreationCenter@city.org

M-F: 10:00am-9:00pm—SAT: 9:00am-4:30pm—S: CLOSED



IT'S SHOW TIME...



HIGHLAND PARK RECREATION CENTER

COSTUMES ENCOURAGE

HALLOWEEN EVENT

FRIDAY OCTOBER 25

4PM-8PM

SAVE THE DATE

FREE EVENT



SCAN ME! =] FOR PROGRAMS

CANDY GAMES MUSIC JUMPER



"PERSONS WITH DISABILITIES ARE WELCOMED TO PARTICIPATE IN OUR CLASSES AND PROGRAMS. REASONABLE ACCOMMODATIONS WILL BE MADE WITH PRIOR ARRANGEMENTS. PLEASE BE AWARE THAT SOME ACCOMMODATIONS MAY TAKE 30 DAYS OR LONGER. PLEASE SUBMIT YOUR REQUEST FOR AN ACCOMMODATION AS SOON AS POSSIBLE."

City of Los Angeles Department of Recreation and Parks



6150 Piedmont Avenue, L.A., CA 90042

Phone (213) 847-4876

EMAIL: HighlandPark.RecreationCenter@lacity.org

M-F: 10:00am-9:00pm—SAT: 9:00am-4:30pm—S: CLOSED



FALL 2024



SCAN ME! =]
FOR PROGRAMS

HIGHLAND PARK RECREATION CENTER



**CAMP OFFERS: ARTS AND CRAFTS, INDOOR
GAMES, SPORTS, AND MUCH MORE!**

REGISTRATION: MONDAY, NOVEMBER 4, 2024

AGES 5-12

NOVEMBER 25-27

CLOSED ON NOVEMBER 28, 29

FEE: TBA

****NO LUNCH PROVIDED
ONLY SNACK****

**CAMP HOURS: 9AM-4:30PM
EXTENDED HOURS: 8AM-9AM
4:30PM-6PM**

**FOR MORE INFORMATION PLEASE CALL US OR VISIT OUR WEBSITE
AT (213) 847-4876 OR
WWW.LAPARKS.ORG/RECCENTER/HIGHLAND**

"PERSONS WITH DISABILITIES ARE WELCOMED TO PARTICIPATE IN OUR CLASSES AND PROGRAMS. REASONABLE ACCOMMODATIONS WILL BE MADE WITH PRIOR ARRANGEMENTS. PLEASE BE AWARE THAT SOME ACCOMMODATIONS MAY TAKE 30 DAYS OR LONGER. PLEASE SUBMIT YOUR REQUEST FOR AN ACCOMMODATION AS SOON AS POSSIBLE."



Join the Highland Park Park Advisory Board (PAB)



Park Advisory Board (PAB)

A Park Advisory Board (PAB) consists of individuals, selected by Department of Recreation and Parks staff, who are community residents, business members, and those who work or spend time in the community they are chosen to represent as volunteer board members. The mission of every PAB is to strengthen their facility's recreation programs and services. Recreation and Parks believes that the partnership between staff and the community is of primary importance in identifying and meeting the recreational needs of the community.

PAB MEMBERSHIP

Various Recreation and Parks facilities throughout the City of Los Angeles host Park Advisory Boards. To learn more about volunteering in a board, please reach out the Recreation and Parks facility you are interested in joining, to ask if they have a board with open positions. The Facility Map Locator at the top left of this webpage is a helpful tool to find parks local to you. Thank you for your interest!



PAB HISTORY

The Department of Recreation and Parks observed the need for a formal method of incorporating community input on decisions affecting communities and initiated the development of Center Service Associations or CSA's in the 1970's. CSA's led the way to the establishment and formalization of what we now recognize as Park Advisory Boards or PAB's since May of 1998.

Park Advisory Boards are essential to the overall operation of a recreation facility. The Department believes that the partnership between staff and the community is of primary importance in identifying and meeting the recreational needs of the community. A Park Advisory Board works to make facilities safe, clean, and hospitable while offering advice on programming and assistance in fundraising.



A Park Advisory Board member is a community stakeholder and understands the community's needs and interests. Members work with the Department on issues involving neighborhood parks, community events, fundraising projects, existing and proposed recreation, and educational programs along with a variety of other issues important to your facility and to your community.

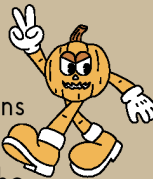
PAB VALUE

Today's social, economic, and political climate demand that decisions concerning the expenditure of public resources are fair, equitable and reflective of the communities and people they impact. This is true of all essential services but especially for services that fall into this category. A Park Advisory Board provides valuable assistance in this area for the City.



A Park Advisory Board:

- Enhances Department resources and creates a positive relationship between the Department and its citizens through mutual collaboration, decision-making, and problem solving;
- Provides additional resources and talent to enhance the abilities of Department staff;
- Expands, extends, and enriches the recreation and community services programs, increase the services of the Department;
- Provides citizens with the opportunity to help their local recreation center;
- Understands the needs and desires of the residents, and conversely helps citizens develop a working knowledge and understanding of how the Department functions and operates;
- Provides an opportunity for residents to improve communication skills and knowledge and expand recreation interests;
- Increases status and prestige, and brings satisfaction to those who serve on the Park Advisory Board, that they are truly making a difference in their community.



How to Join:

- Follow these Steps HOW TO BECOME A VOLUNTEER?
- Choose a program or event to volunteer your time and talents as a PAB member!
- Contact program staff to arrange an interview.
- Complete the Volunteer Application Form and Volunteer Questionnaire. Go to <http://www.laparks.org/volunteerapp>
- Get fingerprinted and pass background check. It's free!
- After clearance, staff will contact you for assignment and orientation!



Scan Me

ALL CLASSES AND PROGRAMS ARE SUBJECT TO CHANGE OR CANCELLATION. ALL REFUNDS WILL BE ASSESSED A 15% FEE.

*PERSONS WITH DISABILITIES ARE WELCOMED TO PARTICIPATE IN OUR CLASSES AND PROGRAMS. REASONABLE ACCOMMODATIONS WILL BE MADE WITH PRIOR ARRANGEMENTS. PLEASE BE AWARE THAT SOME ACCOMMODATIONS MAY TAKE 30 DAYS OR LONGER. PLEASE SUBMIT YOUR REQUEST FOR AN ACCOMMODATION AS SOON AS POSSIBLE.



Highland Park Recreation Center



CITY OF LOS ANGELES

Karen Bass—**Mayor**

Kevin de Leon—**Councilmember, District 14**

Recreation and Parks Commissioners

President—Renata Simril

Vice President—Luis Sanchez

Members— Marie Lloyd, Fiona Hutton, Benny Tran

Recreation and Parks Administration

Jimmy Kim—**General Manager**

Matthew Rudnick— **Executive Officer & Chief of Staff**

Chinyere Stoneham— **Acting Assistant General Manager, Recreation Services**

Anita Meacham—**Superintendent, Metro Region**

Kimberly Simonet—**Principal Recreation Supervisor II**

Leslie Perez— **Principal Supervisor I**

Sharon Nishihara—**Recreation Supervisor, North District**

Highland Park Recreation Center Staff

David Estrada—**Acting Senior Recreation Director**

Eddie Ocampo—**Recreation Coordinator**

Heidi Jimenez—**Recreation Coordinator**

Recreation Assistants

Jose Castaneda, David Guzman, Jackie Guzman, Ricardo Garcia, Leslie Gonzalez, Aaron Lopez, Roland Rangel, Seth Rangel, Viviana Yanez, Richard Ruiz, Susana Rodriguez, Heidi Sanchez, Mia Sanchez

Recreation Aides: Cooper Walts

Pathway Interns: Carol Fuentes, Jenny Lau, Charles Leon, Jose Magana

Park Maintenance Staff

Bertha Cuevas

Creating Community through
People, Parks and Programs!

ALL CLASSES AND PROGRAMS ARE SUBJECT TO CHANGE OR CANCELLATION. ALL REFUNDS WILL BE ASSESSED A 15% FEE.

*PERSONS WITH DISABILITIES ARE WELCOMED TO PARTICIPATE IN OUR CLASSES AND PROGRAMS. REASONABLE ACCOMMODATIONS WILL BE MADE WITH PRIOR ARRANGEMENTS.

PLEASE BE AWARE THAT SOME ACCOMMODATIONS MAY TAKE 30 DAYS OR LONGER. PLEASE SUBMIT YOUR REQUEST FOR AN ACCOMMODATION AS SOON AS POSSIBLE.



SCAN ME! =]
for programs

