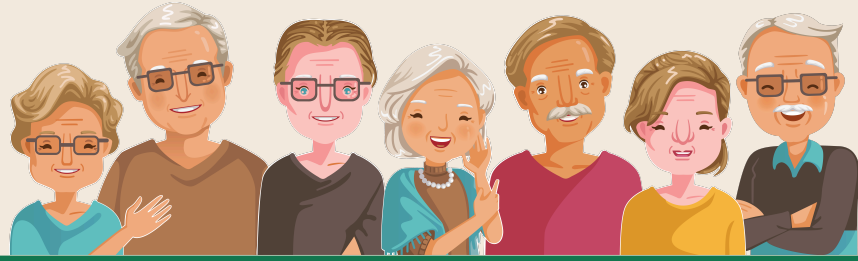


CITY OF LOS ANGELES DEPARTMENT OF RECREATION AND PARKS  
**FELICIA MAHOOD MULTIPURPOSE CENTER**

11338 Santa Monica Blvd, LA 90025 | (310)479-4119 | [laparks.org/multipurpose/felicia-mahood](http://laparks.org/multipurpose/felicia-mahood)



**CLASS SCHEDULE**  
**2025**

**MONDAY**

- 10am** Shakti Naam Chair Yoga
- 10am** Farsi to English Class
- 11am** Beginner English to Farsi Class
- 11am** Arthritis Foundation Exercise

**TUESDAY**

- 10-4pm** Women Open Card Play
- 10am** Open Computer Lab
- 11am** Arthritis Foundation Exercise
- 2-4pm** Advanced Memoir Writing

**WEDNESDAY**

- 11am** Up & Active Exercise
- 10am** Beginner English

**THURSDAY**

- 9:30am** Ultra-Beginner Line Dancing
- 10-1pm** Sewing Lap Robes
- 10-2pm** Drawing & Painting
- 10-4pm** Women Open Card Play
- 10am** Open Computer Lab
- 11am** Arthritis Foundation Exercise
- 1-3pm** Open Play Pickleball

**FRIDAY**

- 11am** ESL Writing
- 1-3pm** Open Play Pickleball

**MONDAY-FRIDAY**

- 10-4pm** Men Open Card Play
- 1-3pm** Open Play Card/Board Games
- 11:30-1pm** JFS Lunch Program (60+)  
\*\$3.00 suggested donation  
\*JFS Transportation to FM available by request at (323) 556-2927

*\*All classes are 1 hour long unless listed otherwise*



**CLASS PASS**

**\$10/MONTH FOR ALL CLASSES**  
**CLASSES ARE FOR ADULTS 50+**

\*CLASSES ARE SUBJECT TO CHANGE OR CANCELLATION WITHOUT NOTICE. PERSONS WITH DISABILITIES ARE WELCOME TO PARTICIPATE IN OUR PROGRAMS. REASONABLE ACCOMMODATIONS CAN BE MADE WITH PRIOR ARRANGEMENT.

