

**CITY OF LOS ANGELES DEPARTMENT OF RECREATION & PARKS
EL SERENO RECREATION COMPLEX**

RECREATION CENTER: 4721 KLAMATH ST., LOS ANGELES, CA 90032 / (323) 225-3517
SENIOR CENTER: 4818 KLAMATH PL., LOS ANGELES, CA 90032 / (323) 222-2040
EMAIL: ELSERENO.RECREATIONCENTER@LACITY.ORG



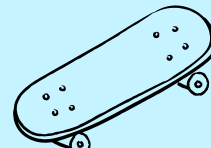
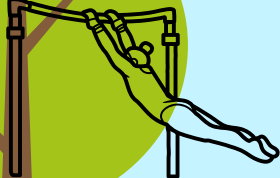
**SUMMER PLAYLA
CLASS SCHEDULE 2024**

\$10 DOLLARS PER CLASS FOR 8 WEEKS

REGISTRATION BEGINS: JUNE 3RD

CLASS	DAY	TIME	AGES	SESSION DATES	LOCATION
TENNIS	MONDAY	5:00PM-6:00PM	5-15	JULY 8 - AUGUST 26	TENNIS COURT
HIP HOP	MONDAY	4:45PM-5:45PM	5-15	JULY 8 - AUGUST 26	EL SERENO SENIOR CENTER
CO-ED KUNG FU	MONDAY	6:00PM-7:00PM	5-17	JULY 8 - AUGUST 26	EL SERENO SENIOR CENTER
MMA I	MONDAY	7:00PM-8:00PM	8-17	JULY 8 - AUGUST 26	EL SERENO SENIOR CENTER
LITTLE TUMBLERS	TUESDAY	4:00PM-5:00PM	3-7	JULY 9 - AUGUST 27	EL SERENO SENIOR CENTER
GPLA GYMNASTICS	TUESDAY	5:00PM-6:00PM	8-11	JULY 9 - AUGUST 27	EL SERENO SENIOR CENTER
ADVANCED GYMNASTICS	TUESDAY	6:00PM-7:00PM	10-15	JULY 9 - AUGUST 27	EL SERENO SENIOR CENTER
GIRLS SELF DEFENSE	WEDNESDAY	5:00PM-6:00PM	5-17	JULY 10 - AUGUST 28	EL SERENO SENIOR CENTER
MMA II	WEDNESDAY	6:00PM-7:00PM	8-17	JULY 10 - AUGUST 28	EL SERENO SENIOR CENTER
KARATE	THURSDAY	4:45PM-5:45PM	5-17	JULY 11 - AUGUST 29	EL SERENO SENIOR CENTER
SKATEBOARDING 1	FRIDAY	5:30PM-6:30PM	5-15	JULY 12 - AUGUST 30	SKATE PARK
SKATEBOARDING 2	FRIDAY	6:30PM-7:30PM	5-15	JULY 12 - AUGUST 30	SKATE PARK
BALLET 1	SATURDAY	9:30AM-10:30AM	3-11	JULY 13 - AUGUST 31	EL SERENO SENIOR CENTER
BALLET 2	SATURDAY	10:30AM-11:30AM	3-11	JULY 13 - AUGUST 31	EL SERENO SENIOR CENTER

***ALL CLASSES SUBJECT TO CHANGE OR CANCELLATION WITHOUT NOTICE**



**GOOD SPORTSMANSHIP IS EVERYONE'S RESPONSIBILITY!
BE A GOOD SPORT!**

SCAN TO REGISTER



@ElSerenoRecreationComplex
@LACITYParks



ACHIEVING GENDER EQUALITY THROUGH A CONTINUOUS COMMITMENT TO GIRLS & WOMEN IN SPORTS.
PERSONS WITH DISABILITIES ARE WELCOME TO PARTICIPATE IN OUR PROGRAMS. REASONABLE ACCOMMODATIONS WILL BE MADE WITH PRIOR ARRANGEMENTS.
PAYMENT BY CASH, CHECK/MONEY ORDER PAYABLE TO : CITY OF LA . VISA/MASTERCARD ACCEPTED. REFUND POLICY: "FULL REFUNDS ARE ONLY ISSUED WHEN THE RECREATION CENTER CANCELS THE ACTIVITY. A 15% CANCELLATION FEE IS ASSESSED FOR ALL REFUNDS." A COLLECTION FEE WILL BE CHARGED FOR EACH CHECK RETURNED BY THE BANK.