

CITY OF LOS ANGELES | DEPARTMENT OF RECREATION & PARKS



DENKER REC. CENTER



WELCOME
Winter
2025

DENKER RECREATION CENTER

1550 W. 35th Pl.

Los Angeles, CA 90018

Office #: (323) 733-8367

Email: Denker.RecreationCenter@LACity.org



DENKER REC. CENTER

1550 W. 35th Pl

Los Angeles, CA 90018

Office: (323) 733-8367

Email: Denker.RecreationCenter@lacity.org



AFTERSCHOOL CLUB



ONE TIME REGISTRATION FEE: \$10

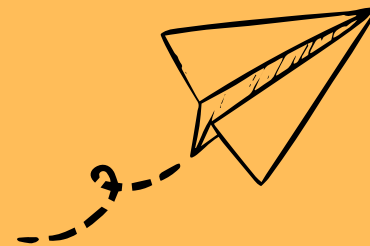
WEEKLY FEE: \$25 PER CHILD

WE PICK UP FROM LOCAL SCHOOLS

MONDAY-FRIDAY

GRADES: K-6TH

2:00PM - 6:00PM



WHAT WE PROVIDE

- Homework Help
- Enrichment Program
- Tutoring
- Recreational Activities
- Snack



Persons with disabilities are encouraged to participate in our classes and programs. Reasonable accommodations may be made with prior arrangement. "Achieving Gender Equity through a continuous commitment to Girls and Women in Sports" This program is subject to cancellation.

DENKER REC. CENTER

1550 W. 35TH PL
LOS ANGELES, CA 90018
OFFICE: (323) 733-8367



WINTER CAMP

Registration Begins:
Nov. 4th, 2024

CAMP DATES:

DECEMBER 16, 2024 - JANUARY 03, 2025

CAMP HOURS: 8:00 A.M. - 6:00 P.M.

AGES: 5 - 12 YEARS

Week 1: 12/16/24 - 12/20/24

Monday - Friday

Weekly Fee: \$90

Week 2: 12/23/24 - 12/27/24

Mon, Tues, Thurs & Friday

Closed: Wed. Dec 25, 2024

Weekly Fee: \$70

Week 3: 12/30/24 - 1/03/25

Mon, Tues, Thurs & Friday

Closed: Wed. Jan 1, 2025

Weekly Fee: \$70



- Sports, Outdoor Adventures, Youth Chefs Club, Mini Scientists, Arts & Crafts, and More!
- **Lunch is not included** -Please pack a lunch
- There will be **Field Trips**





DENKER REC. CENTER

1550 W. 35TH PL LOS ANGELES, CA 90018

OFFICE: (323) 733-8367



TEEN CLUB

AGES 11-16



TUES-THURS 5:30PM-8:30PM

FRIDAYS 5:00PM-9:00PM

- **ACADEMIC ENRICHMENT**
- **SOCIAL NETWORKING**
- **SELF ESTEEM BUILDING**
- **PAID WORK EXPERIENCE**
- **DAILY DROP IN**
- **FRIDAY NIGHT EXTREME TEENS**
- **FIELD TRIPS**

Persons with disabilities are encouraged to participate in our classes and programs. Reasonable accommodations may be made with prior arrangement. The classes and programs on this flyer may be subject to cancellation or change.





DENKER REC. CENTER



REGISTRATION STARTS
11/4/2024

YOUTH CO-ED BASKETBALL

FEE INCLUDES: UNIFORM,
AWARDS AND OFFICIALS

\$10



YOUTH CO-ED BASKETBALL

GAME DAYS
EVERY SATURDAY

9:30AM-10:30AM
11AM - 12PM
12PM - 2PM
2PM - 4PM

DIVISION

PEEWEE/ROOKIE
MINOR
MAJOR
JUNIOR

AGES

5yr-8yr old
9yr-10yr old
11yr - 12yr old
13yr-15yr old

GAME TIME

TBA
TBA
TBA
TBA

FIRST GAME STARTS: 1/11/25

LAST GAME ENDS 2/22/25

1550 W. 35th PL LA, CA 90018

Phone #: (323) 733-8367

Denker.RecreationCenter@LACity.org



SCAN QR
CODE OR
VISIT

Register
here

laparks.org/reccenter/denker

DENKER REC. CENTER



GPLA

Girls Play Los Angeles

BASKETBALL

REGISTRATION STARTS

11/4/2024

FEE
\$10

FIRST GAME
1/4/25

LAST GAME
02/22/25

EVERY SATURDAY
TBA

MINOR/MAJOR
9 - 13 YEARS OLD



1550 W 35TH PL. / Los Angeles, CA 90018

Phone #: (323) 733-8367

Denker.recreationcenter@lacity.org



SCAN QR
CODE

Register:

LAPARKS.ORG/RECCENTER/Denker

Persons with disabilities are encouraged to participate in our classes and programs. Reasonable accommodations may be made with prior arrangement. "Achieving Gender Equity through a continuous commitment to Girls and Women in Sports" This program is subject to cancellation. "PlayLA Youth and Adaptive Sports Program is made possible by the LA28 Olympic and Paralympic Games, allowing youth to participate for \$10. Waivers are available, ask for details.



GPLA

Girls Play Los Angeles



VOLLEYBALL



REGISTRATION BEGINS
11/4/2024

AGES
9-15
yrs old

FEE
\$10



DIVISION

MINORS
MAJORS
JUNIORS

AGES

9yr-10yr old
11yr - 12yr old
13yr - 15yr old

GAME TIMES

WEDNESDAYS - TBA
WEDNESDAYS - TBA
WEDNESDAYS - TBA



DENKER REC

1550 W. 35th Place
Los Angeles, CA 90018
Number: (323) 733-8367 |

Email: Denker.RecreationCenter@city.org



LEAGUE STARTS:
1/08/25

LEAGUE ENDS:
2/19/25

Persons with disabilities are encouraged to participate in our classes and programs. Reasonable accommodations may be made with prior arrangement. "Achieving Gender Equity through a continuous commitment to Girls and Women in Sports" This program is subject to cancellation.





GPLA

Girls Play Los Angeles



VÓLEIBOL



COMIENZA EL REGISTRO
11/4/2024

EDADES
9-15
hace años

TARIFA
\$10



DIVISIÓN

EDADES

TIEMPO DE JUEGO

MENOR
ESPECIALIDAD
JÓVENES

9 años - 10 años
11 años - 12 años
13 años - 15 años

WEDNESDAYS - TBA
WEDNESDAYS - TBA
WEDNESDAYS - TBA



DENKER REC

1550 W. 35th Place
Los Angeles, CA 90018
Number: (323) 733-8367 |
Email: Denker.RecreationCenter@lacity.org



COMIENZA LA LIGA:
1/08/25

LA LIGA TERMINA:
2/19/25

Persons with disabilities are encouraged to participate in our classes and programs. Reasonable accommodations may be made with prior arrangement. "Achieving Gender Equity through a continuous commitment to Girls and Women in Sports" This program is subject to cancellation.





TRACK & FIELD



Registration Starts
12/04/24

AGES 8-15
\$10
PER CHILD

Every Thursday
4:00pm - 5:00pm

8 WEEK SESSION

CLASSES BEGIN JAN 9TH, 2025

CLASSES ENDS FEB 20, 2025

DENKER REC CENTER

1550 W. 35TH PL

LOS ANGELES, CA 90018

(323) 733-8367



SCAN QR
CODE OR
VISIT

laparks.org/reccenter/denker

Persons with disabilities are encouraged to participate in our classes and programs. Reasonable accommodations may be made with prior arrangement. "Achieving Gender Equity through a continuous commitment to Girls and Women in Sports" This program is subject to cancellation. "PlayLA Youth and Adaptive Sports Program is made possible by the LA28 Olympic and Paralympic Games, allowing youth to participate for \$10. Waivers are available, ask for details.



PISTA & CAMPO



Comienza el registro
12/04/24

Edades 8-15

\$10

POR NIÑO

Todos los jueves
4:00pm - 5:00pm

SESIÓN DE 8 SEMANAS

LAS CLASES COMIENZAN EL 9 DE ENERO DE 2025

LA CLASE TERMINA EL 20 DE FEBRERO DE 2025



DENKER REC CENTER

1550 W. 35TH PL.

LOS ANGELES. CA 90018

(323) 733-8367

SCAN QR
CODE OR
VISIT

laparks.org/reccenter/denker



Persons with disabilities are encouraged to participate in our classes and programs. Reasonable accommodations may be made with prior arrangement. "Achieving Gender Equity through a continuous commitment to Girls and Women in Sports" This program is subject to cancellation. "PlayLA Youth and Adaptive Sports Program is made possible by the LA28 Olympic and Paralympic Games, allowing youth to participate for \$10. Waivers are available, ask for details.



JUDO

8 WEEK SESSION

DENKER REC. CENTER

1550 W. 35TH PL. LA, CA 90018
OFFICE: (323)733-8367



TUES & THURS

6:30P-8:30PM

REGISTRATION:

12/02/24

\$10 PER CHILD



**CLASSES BEGIN
JAN 7TH, 2025**

AGES 5-12

AGES VARY BY SITE

Persons with disabilities are encouraged to participate in our classes and programs. Reasonable accommodations may be made with prior arrangement. "Achieving Gender Equity through a continuous commitment to Girls and Women in Sports" This program is subject to cancellation. "PlayLA Youth and Adaptive Sports Program is made possible by the LA28 Olympic and Paralympic Games, allowing youth to participate for \$10. Waivers are available, ask for details.



VISIT US AT: LAPARKS.ORG



JUDO

SESIÓN DE 10 SEMANAS

DENKER REC. CENTER

1550 W. 35TH PL. LA, CA 90018
OFFICE: (323)733-8367

PLAYLA

MARTES Y JUEVES

6:30PM-8:30PM

2 DE DICIEMBRE DE 2024

\$10

POR NIÑO



LAS CLASES COMIENZAN 7 DE ENERO DE 2025

EDADES 5-12

LAS EDADES VARÍAN

SEGÚN EL SITIO

Persons with disabilities are encouraged to participate in our classes and programs. Reasonable accommodations may be made with prior arrangement. "Achieving Gender Equity through a continuous commitment to Girls and Women in Sports" This program is subject to cancellation. "PlayLA Youth and Adaptive Sports Program is made possible by the LA28 Olympic and Paralympic Games, allowing youth to participate for \$10. Waivers are available, ask for details.



VISIT US AT: LAPARKS.ORG



DENKER REC. CENTER

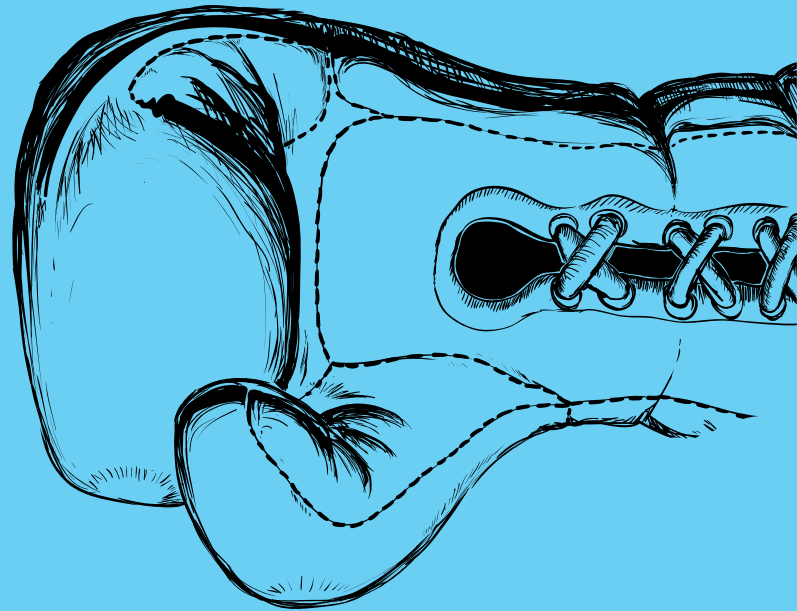


Boxing



Co-Ed

Registration Starts
12/02/24



AGES 7-15

\$10

PER CHILD

8 WEEK SESSION

CLASSES BEGIN JAN 6TH, 2025

CLASSES ENDS FEB 17TH, 2025

***NO CLASSES JAN 20 & FEB 17TH ***

MONDAYS

4PM-5PM

5PM-6PM

DENKER REC CENTER

1550 W. 35TH PL.

LOS ANGELES. CA 90018

SCAN QR
CODE OR
VISIT

laparks.org/reccenter/denker **(323) 733-8367**



Persons with disabilities are encouraged to participate in our classes and programs. Reasonable accommodations may be made with prior arrangement. "Achieving Gender Equity through a continuous commitment to Girls and Women in Sports" This program is subject to cancellation. "PlayLA Youth and Adaptive Sports Program is made possible by the LA28 Olympic and Paralympic Games, allowing youth to participate for \$10. Waivers are available, ask for details.



DENKER REC. CENTER

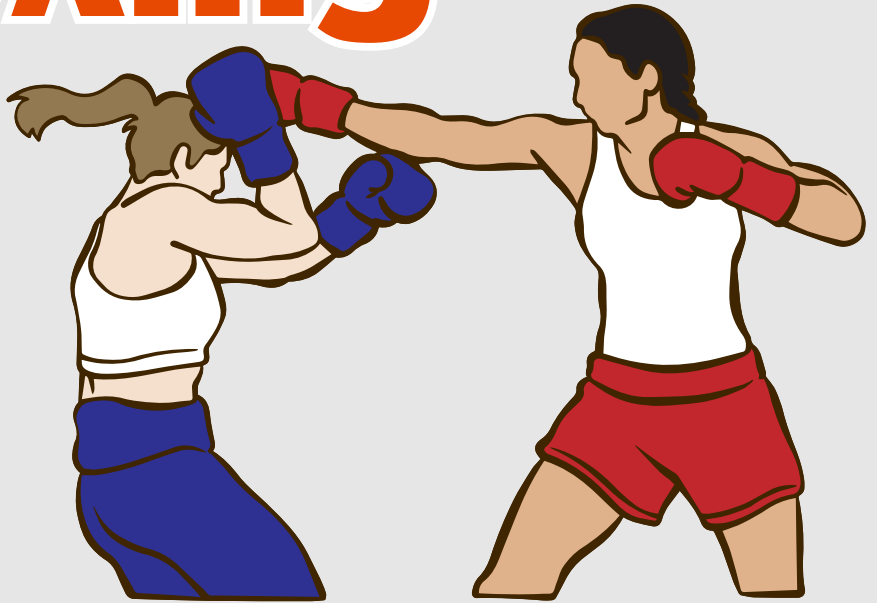
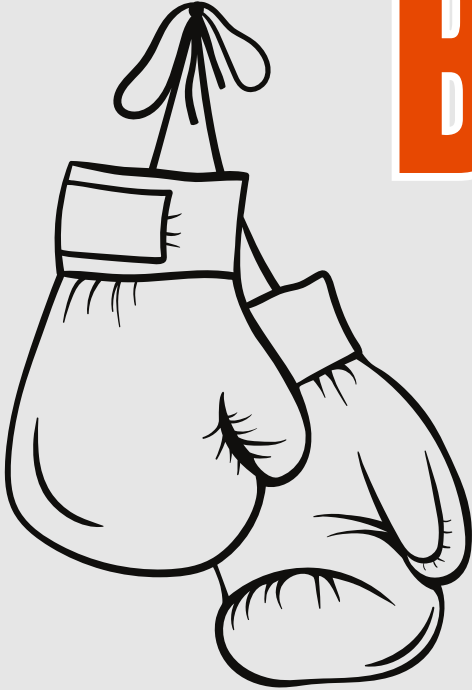


GPLA

Girls Play Los Angeles

Boxing

Registration Starts
12/02/24



AGES 7-15

\$10

PER CHILD

8 WEEK SESSION

CLASSES BEGIN JAN 6TH, 2025

CLASSES ENDS FEB 24TH, 2025

***NO CLASSES JAN 20 & FEB 17 ***

MONDAYS

6PM-7PM

DENKER REC CENTER

1550 W. 35TH PL.

LOS ANGELES. CA 90018

(323) 733-8367



SCAN QR
CODE OR
VISIT

laparks.org/reccenter/denker



Persons with disabilities are encouraged to participate in our classes and programs. Reasonable accommodations may be made with prior arrangement. "Achieving Gender Equity through a continuous commitment to Girls and Women in Sports" This program is subject to cancellation. "PlayLA Youth and Adaptive Sports Program is made possible by the LA28 Olympic and Paralympic Games, allowing youth to participate for \$10. Waivers are available, ask for details.



BALLET

8 WEEK SESSION

DENKER REC. CENTER

1550 W. 35TH PL. LA, CA 90018
OFFICE: (323)733-8367



TUESDAYS

TINY BALLET 5:00PM-6:00PM

BALLET 5:30PM-6:30PM

REGISTRATION:
12/02/24

\$10 PER CHILD



**CLASSES BEGIN
JAN 7TH, 2025**

**CLASSES END
FEB 18TH, 2025**

AGES 4-6 "TINY BALLET"
AGES 7-12 "BALLET"

YOUTH CO-ED



Persons with disabilities are encouraged to participate in our classes and programs. Reasonable accommodations may be made with prior arrangement. "Achieving Gender Equity through a continuous commitment to Girls and Women in Sports" This program is subject to cancellation. "PlayLA Youth and Adaptive Sports Program is made possible by the LA28 Olympic and Paralympic Games, allowing youth to participate for \$10. Waivers are available, ask for details.



DENKER REC. CENTER

CROCHET



YOUTH CO-ED

Registration Starts
12/02/24



AGES 6-14

\$10

PER CHILD

8 WEEK SESSION

CLASSES BEGIN JAN 8TH, 2025

CLASSES ENDS FEB 26, 2025

WEDNESDAYS

4:30PM-5:30PM

DENKER REC CENTER

1550 W. 35TH PL.

LOS ANGELES. CA 90018

(323) 733-8367



SCAN QR
CODE OR
VISIT

laparks.org/reccenter/denker

DENKER REC. CENTER

SOCCER

Clinic



\$10 PER PERSON	YOUTH AGE 5-12	JAN 4TH - FEB 22 2025
---------------------------	--------------------------	--

@DENKERRECREATIONCENTER

SATURDAYS

AGE 5-8: 10AM - 11AM

AGE 9-12: 11AM - 12PM



DENKER REC

1550 W. 35TH PL.
LOS ANGELES, CA 90018
(323) 733-8367



SCAN QR
CODE OR
VISIT

laparks.org/reccenter/denker

Persons with disabilities are encouraged to participate in our classes and programs. Reasonable accommodations may be made with prior arrangement. "Achieving Gender Equity through a continuous commitment to Girls and Women in Sports" This program is subject to cancellation. "PlayLA Youth and Adaptive Sports Program is made possible by the LA28 Olympic and Paralympic Games, allowing youth to participate for \$10. Waivers are available, ask for details.

DENKER REC. CENTER

BASEBALL

Skills



\$10 PER PERSON	YOUTH AGE 5-8	JAN 16TH - MAR 6 2025
---------------------------	-------------------------	--

@DENKERRECREATIONCENTER

THURSDAYS

AGE 5-8: 4:00PM-5:00PM

DENKER REC

1550 W. 35TH PL.
LOS ANGELES, CA 90018
(323) 733-8367



SCAN QR
CODE OR
VISIT

laparks.org/recenter/denker

Persons with disabilities are encouraged to participate in our classes and programs. Reasonable accommodations may be made with prior arrangement. "Achieving Gender Equity through a continuous commitment to Girls and Women in Sports" This program is subject to cancellation. "PlayLA Youth and Adaptive Sports Program is made possible by the LA28 Olympic and Paralympic Games, allowing youth to participate for \$10. Waivers are available, ask for details.

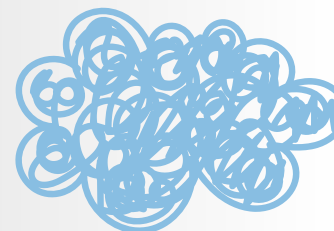
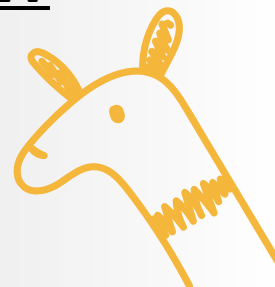
DENKER REC. CENTER



ARTFUL EXPRESSIONS



Registration Starts
12/02/24



8 WEEK SESSION

AGES 5-17

\$10

PER CHILD

CLASSES BEGIN JAN 9TH, 2025

CLASSES ENDS FEB 27TH, 2025

THURSDAYS

5:00PM-6:00PM

DENKER REC CENTER

1550 W. 35TH PL.

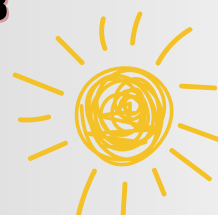
LOS ANGELES. CA 90018

(323) 733-8367



SCAN QR
CODE OR
VISIT

laparks.org/recenter/denker



DENKER REC. CENTER

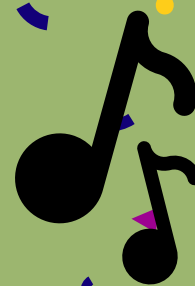
DANCE



PLAYLA



REGISTRATION STARTS
12/02/2024



@DENKERRECREATIONCENTER

8 WEEK SESSION

AGES 7-12

\$10

PER CHILD

CLASSES BEGIN JAN 8TH, 2025

CLASSES ENDS MAR 6TH, 2025

WEDNESDAYS

5:00PM-6:00PM

DENKER REC CENTER

1550 W. 35TH PL.

LOS ANGELES. CA 90018

(323) 733-8367

SCAN QR
CODE OR
VISIT

laparks.org/reccenter/denker

Persons with disabilities are encouraged to participate in our classes and programs. Reasonable accommodations may be made with prior arrangement. "Achieving Gender Equity through a continuous commitment to Girls and Women in Sports" This program is subject to cancellation. "PlayLA Youth and Adaptive Sports Program is made possible by the LA28 Olympic and Paralympic Games, allowing youth to participate for \$10.



DENKER REC. CENTER



Registration Starts
12/02/24



NIGHT

ADULT VOLLEYBALL

MONDAYS

STARTS/ENDS:
JAN 6TH - MAR 10TH
2025

AGES: 18+ 6:00PM-9:00PM

DENKER REC

1550 W. 35TH PL.
LOS ANGELES, CA 90018
(323) 733-8367

FEE:

\$10

PER PERSON



SCAN QR
CODE OR
VISIT

laparks.org/recenter/denker

Persons with disabilities are encouraged to participate in our classes and programs. Reasonable accommodations may be made with prior arrangement. The classes and programs on this flyer may be subject to cancellation or change.

DENKER REC. CENTER

1550 W. 35TH PL LOS ANGELES, CA 90018

OFFICE: (323) 733-8367



BREAKFAST WITH

SANTA



- Hot Chocolate
- Arts & Craft
- Sweet bread, Biscuits & More!



Saturday

DEC 14
2024

10:00AM-2:00 PM

1550 W. 35th PL.,
Los Angeles, CA 90018

FREE ENTRY



DENKER REC. CENTER

1550 W. 35TH PL LOS ANGELES, CA 90018

OFFICE: (323) 733-8367



DESAYUNO CON

PAPÁ NOEL



- Chocolate caliente
- Artes y manualidades
- ¡Pan dulce, galletas y más!

Sábado

14 DE
DICIEMBRE
2024

10:00 AM - 2:00 PM

1550 W. 35th Pl.,
Los Angeles, CA 90018

ENTRADA LIBRE

