



CITY OF LOS ANGELES  
DEPARTMENT OF RECREATION AND PARKS



**CABRILLO BEACH BATHHOUSE**

3800 STEPHEN M. WHITE DR.  
SAN PEDRO, CA 90731  
(310) 548-7554

CABRILLOBEACH.BATHHOUSE@LACITY.ORG



**YOU AND ME  
BY THE SEA**

**PARTICIPANTS MUST BE ACCOMPANIED BY AN ADULT**  
**CLASS DESIGNED FOR INFANTS 18-36 MONTHS**

ENJOY THE COMPANY OF OTHER PARENTS AND THEIR TODDLERS WHILE LEARNING, AND PLAYING. PROGRAM FOCUSES ON MOTOR SKILL DEVELOPMENT, PARENT TIPS, ART, AND PREPARING TODDLERS FOR PRESCHOOL CLASSROOM INSTRUCTION.

**WEDNESDAYS**

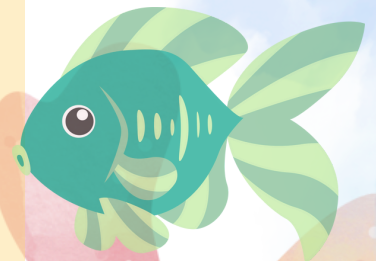
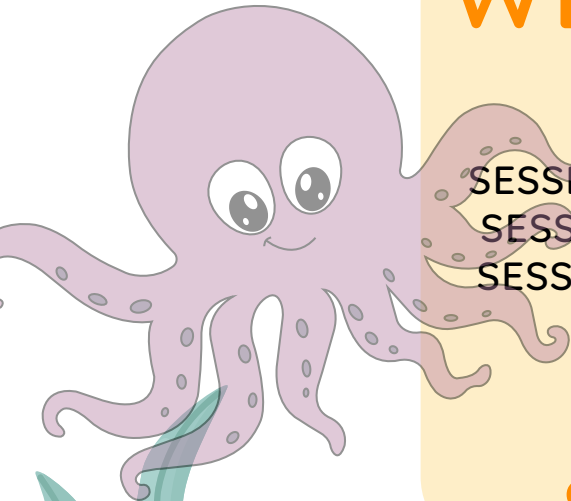
**10:00AM-11:00AM**

SESSION 1: SEPTEMBER 4 -25, 2024

SESSION 2: OCTOBER 2 - 30, 2024

SESSION 3: NOVEMBER 6-20, 2024

**\$50/MONTH**



REGISTER HERE



@CABRILLO\_BEACH\_BATHHOUSE



@CABRILLOBB

PERSONS WITH DISABILITIES ARE WELCOME TO PARTICIPATE IN OUR PROGRAMS.  
REASONABLE ACCOMMODATIONS WILL BE MADE WITH PRIOR ARRANGEMENTS.

PLAYLA YOUTH AND ADAPTIVE SPORTS PROGRAM IS MADE POSSIBLE BY THE LA28 OLYMPIC AND PARALYMPIC GAMES.

WAIVERS AVAILABLE FOR THOSE WHO QUALIFY, ASK FOR DETAILS.

CLASSES AND PROGRAMS ARE SUBJECT TO CHANGE OR CANCELLATION WITHOUT PRIOR NOTICE