


INFORMATIONAL BOARD REPORT

CITY OF LOS ANGELES
DEPARTMENT OF RECREATION AND PARKS

August 15, 2024

TO: BOARD OF RECREATION AND PARK COMMISSIONERS
FROM: JIMMY KIM, General Manager 
SUBJECT: VARIOUS COMMUNICATIONS

The following communications addressed to the Board have been received by the Board Office, and the action taken thereon is presented.

<u>From</u>		<u>Action Taken</u>
Griffith Park Pony Ride comments		Referred to General Manager
1) Yael Pardess comments regarding the Arroyo Seco Water Reuse Project	#9686	Referred to General Manager
2) Kristen Schonert comments regarding a Proposal for a Signage in Venice	#9690	Referred to General Manager
3) Gerry Hans comments regarding the Haunted Hayride	#9691	Referred to General Manager
4) Nicole Alvarez comments regarding the Haunted Hayride	#9691a	Referred to General Manager
5) Alex Gruenenfelder comment regarding the Haunted Hayride	#9691b	Referred to General Manager
6) Jacob Blankenship comments regarding Homeless Encampment Issue	#9692	Referred to General Manager
7) Michael Sterman comments regarding Park Concerns at Dorothy and Benjamin Smith Park	#9693	Referred to General Manager
8) Laddie Williams comments regarding Dogs Off-Leash at Oakwood Recreation Center	#9694	Referred to General Manager

9) Mariann Shea comments regarding a Request for a reduction for a Permit Fee	#9695	Referred to General Manager
10) Mauro Garcia comments regarding Graffiti at Sycamore Grove Park	#9696	Referred to General Manager
11) Dean Dana comments regarding the Tennis Courts at Valley Plaza	#9697	Referred to General Manager
12) Miriam Preissel comments regarding Cooling Centers for Pets	#9698	Referred to General Manager
13) Moran de Musee comments regarding Discrimination and Harassment at the Los Angeles Equestrian Center	#9699	Referred to General Manager
14) Jennifer Clark comments regarding the Proposed Art Policy	#9700	Referred to General Manager

Prepared by Rosa Cartagena, RAP Commission Office



Rap Commissioners <rap.commissioners@lacity.org>

Re: Animal-based entertainment at Griffith Park

1 message

Rap Commissioners <rap.commissioners@lacity.org>
To: Samuel Butler <

Thu, Aug 8, 2024 at 1:43 PM

Good afternoon,

Thank you for contacting the Board of Recreation and Park Commissioners Office, your email will be forwarded to the Commissioners and staff.

On Thu, Aug 8, 2024 at 1:12 PM Samuel Butler < > wrote:

I am writing to express my strong opposition to any form of animal exploitation or animal-based entertainment at the former Griffith Park Pony Rides and Petting Zoo site. I'm glad to see that this nonsense has finally ended. Please resist the pressure from the for-profit horse lobby and do not make the mistake of restarting it. Forcing animals to be used for human entertainment should be a thing of the past. It's time to move on and show these animals the respect and compassion they deserve after centuries of abuse and being treated by humans as a work tool for making money.

There is no acceptable option for a concession stand that exploits animals. Forcing animals into situations in which they're used to entertain noisy crowds is abuse. It's time for the city to move on from this antiquated practice. Manipulating animals against their will for ticket sales shows a lack of empathy for their well-being, leading to poor living conditions and inadequate care, as we saw with the former pony rides and petting zoo. Regardless of all the usual promises of better treatment and rest periods and improved care, experience teaches us that once the activities are reinstated, conditions remain the same as before. Profit is the primary motive and will always override any ethical or welfare-related concerns. It's the animals that will suffer.

Any offer of supervision by city departments is a smokescreen. LA Animal Services is overburdened and can't keep up with its current duties. Animal shelters are over-capacity, and calls for assistance are pouring in and often going unanswered. The city doesn't have the time or other resources to monitor the treatment of animals at public exhibits. Previously, the city's lack of oversight of Griffith Park Pony Rides and Petting Zoo meant that elderly ponies suffered from dehydration, untreated urgent dental problems, hoof ailments, and saddle sores yet were still forced to work. Yet again, the reality is that any return to animal-based entertainment at the park will result in animals suffering.

Humans have many, many alternatives for entertaining themselves. Making animals suffer as yet another form of entertainment shouldn't be one of them.

Thank you.

Sam Butler
Westchester, Los Angeles, CA



Rap Commissioners <rap.commissioners@lacity.org>

Re: Animals used for entertainment

1 message

Rap Commissioners <rap.commissioners@lacity.org>

Thu, Aug 8, 2024 at 12:07 PM

To: Patricia Kijunak <
>

Good afternoon,

Thank you for contacting the Board of Recreation and Park Commissioners Office, your email will be forwarded to the Commissioners and staff.

On Thu, Aug 8, 2024 at 12:03 PM Patricia Kijunak <
> wrote:

Please please do not even CONSIDER permitting the return of pony roses and petting zoo at Griffith Park or anywhere in Los Angeles.

I have personally witnessed the inhumane treatment of animals at this venue.

Patricia Kijunak

Sent from my iPhone



Rap Commissioners <rap.commissioners@lacity.org>

Re: Consideration of use of animals at Griffith Park

1 message

Rap Commissioners <rap.commissioners@lacity.org>
To: Pauline doucet < >

Thu, Aug 8, 2024 at 1:44 PM

Good afternoon,

Thank you for contacting the Board of Recreation and Park Commissioners Office, your email will be forwarded to the Commissioners and staff.

On Thu, Aug 8, 2024 at 1:29 PM Pauline doucet < > wrote:

Dear commissioners,

I am begging you to exclude entirely the use of animals for any type of entertainment at Griffith Park and the greater Los Angeles. There is absolutely no excuse to exploit animals in any way, fo it is more than time we recognized, and acted upon, how wrong and unethical human beings have been, in the light of what we know about them at this junction of the evolution of the human race.

There are so many better appealing options, easier to manage and even much more cost effective without making the life of all those beautiful and sentient creatures sheer misery.

Hoping with all my heart that you will join the larger group of organisations and companies who have taken the new and right path by ending senseless and morally questionable choices.

I thank you for your attention.

Pauline Doucet

Sent from my iPad



Rap Commissioners <rap.commissioners@lacity.org>

Re: Do Unto Others As You Would Want Done To You.

1 message

Rap Commissioners <rap.commissioners@lacity.org>
To: R CHINELLI

Fri, Aug 9, 2024 at 7:37 AM

Good morning,

Thank you for contacting the Board of Recreation and Park Commissioners Office, your email will be forwarded to the Commissioners and staff

On Thu, Aug 8, 2024 at 6:53 PM R CHINELLI < > wrote:

PONY RIDE (poem 88)
by Vivian Chinelli

The sweet little pony goes around
and around
then around
and around
then around
and around
then around
all day.

With kids on her back she
walks clickety-clack and
though she's exhausted
makes no sound
all day.

The kids kick her side to
make her go faster.
She's a slave to their pleasure
and they are her master.

So there's nothing she can do but
follow the path that goes around
and around
then around.

She yearns to be free
and play in the field with
the weight off her back,
but her fate has been sealed.

No matter how thirsty, or hungry,
or in pain, she goes around
then around
and around.

Poor little pony.
Pity her plight.
Write letters. Start a protest.
Please do what is right to
stop this injustice to
show that you care.

Fight injustice at pony rides
and, of course, EVERYWHERE!



Rap Commissioners <rap.commissioners@lacity.org>

Re: Forced Pony Rides

1 message

Rap Commissioners <rap.commissioners@lacity.org>

Fri, Aug 9, 2024 at 7:37 AM

To: Leslie Silton <

Good morning,

Thank you for contacting the Board of Recreation and Park Commissioners Office, your email will be forwarded to the Commissioners and staff

On Thu, Aug 8, 2024 at 6:11 PM Leslie Silton <

> wrote:

I don't have to be a veterinarian to see the ponies are exhausted, heads hanging down in the heat. The mistreatment is not acceptable.

Stop the enforced pony rides altogether if the people running this can't do it right.

Leslie Silton
Animal Activist
Los Angeles



Rap Commissioners <rap.commissioners@lacity.org>

Re: Griffith Park Pony Rides

1 message

Rap Commissioners <rap.commissioners@lacity.org>
To: Stefanie LaHart <>

Thu, Aug 8, 2024 at 1:42 PM

Good afternoon,

Thank you for contacting the Board of Recreation and Park Commissioners Office, your email will be forwarded to the Commissioners and staff.

On Thu, Aug 8, 2024 at 1:11 PM Stefanie LaHart <> wrote:

Hello,

I am a resident of West Hollywood and frequently run the path and trails in Griffith Park. I saw first hand how miserable the lives of these ponies were before the City gratefully shut it down.

I am completely opposed to this idea of bringing the Pony Rides back to Griffith and urge you to take stronger consideration to the plight of these ponies who are used, abused and willfully mistreated.

- I ask for an animal-free model in Griffith Park and a ban on all animal-based entertainment. There is no acceptable option for a concession stand that exploits animals. Forcing animals into situations in which they're used to entertain noisy crowds is oppression, and it's time the city moved on from this cruel, antiquated practice.
- I am against manipulating animals against their will for ticket sales shows a lack of empathy for their well-being, leading to poor living conditions and inadequate care, as we saw with the former pony rides and petting zoo.
 - I am against pushing more responsibility onto LA Animal Services, as it is in the midst of a crisis and can't keep up with its current duties. Animal shelters are over capacity, and calls for assistance are pouring in and often going unanswered. The city doesn't have the time or other resources to monitor the treatment of animals at public exhibits.
 - I am against the city's lack of oversight of Griffith Park Pony Rides and Petting Zoo leading to elderly ponies suffering from dehydration, untreated urgent dental problems, hoof ailments, and saddle sores yet were still forced to work.

Thanks for helping to build a kinder world.

Sincerely,



Rap Commissioners <rap.commissioners@lacity.org>

Re: No pony rides at Griffith park

1 message

Rap Commissioners <rap.commissioners@lacity.org>
To: keymoses99 <

Thu, Aug 8, 2024 at 11:29 AM

Good morning,

Thank you for contacting the Board of Recreation and Park Commissioners Office, your email will be forwarded to the Commissioners and staff.

On Thu, Aug 8, 2024 at 10:47 AM keymoses99 <
Not good for ponies

> wrote:

Sent from my Verizon, Samsung Galaxy smartphone



Rap Commissioners <rap.commissioners@lacity.org>

Re: Non-animal exploitative future; six elderly ponies

1 message

Rap Commissioners <rap.commissioners@lacity.org>

Fri, Aug 2, 2024 at 12:48 PM

To: Feel the Bern Los Angeles County <

>

Good afternoon,

Thank you for contacting the Board of Recreation and Park Commissioners Office, your email will be forwarded to the Commissioners and staff

On Fri, Aug 2, 2024 at 12:24 PM Feel the Bern Los Angeles County <

> wrote:

Dear Jimmy Kim, RAP Commissioners, and Councilmember Nithya Raman,

Feel the Bern Democratic Club, Los Angeles County, an affiliate of Our Revolution, the nationwide organization founded by Bernie Sanders, strongly supports a non-animal based model for future use of the old Griffith Park pony rides and petting zoo site.

The City of LA should not host or support animal exploitation.

We also have endorsed you, Councilmember Raman, in each of your City Council runs. We want to be able to endorse you a third time if you run again in 2028, but we also want you to support animals and not subject them to exploitation.

We also strongly urge you to look into the situation of the six elderly ponies who were allegedly placed at other facilities, as reported on Dr. Sachar's second progress report.

According to the USDA, who regulated the petting zoo at the Griffith Park and Pony Rides, operators were required to report back to the agency on animals that were transferred.

These standards were placed to ensure the safety of these animals. Los Angeles Recreation and Parks should have applied those same standards to the elderly ponies to ensure that they were in fact transferred and that it was done safely and effectively.

We thank General Manager Jimmy Kim for not renewing the prior operator's contract, thus shutting down the pony rides in December 2022. The future of Griffith Park should not include the use of animals for entertainment.

Again, we are urging you to make the progressive and compassionate choice of a non-animal model.

Thank you for your time and consideration.

For the animals,
Paul, on behalf of Feel the Bern LA

Paul Cole Padilla (he/him)

President, Feel the Bern Democratic Club, Los Angeles County, and Our Revolution- Feel the Bern, Los Angeles County

Website: <https://feeltheberndemocraticclublosangeles.wordpress.com>

Facebook: <https://www.facebook.com/FeeltheBernDemClubLA/>

Instagram: <https://www.instagram.com/feeltheberndemsla/>

Twitter: <https://twitter.com/FeelTheBernLA>

- Regular General meetings are usually the 4th Sunday night of every month on Zoom! (unless announced otherwise, such as to avoid holiday and other conflicts)

- Please add _____ to your VIP, "Trusted Sender," *Starred*, and/or Contact List so these emails don't land in your junk, spam, or promotions folder! Gracias!



Rap Commissioners <rap.commissioners@lacity.org>

Re: Now is the time to oppose any form of animal exploitation at Griffith Park

1 message

Rap Commissioners <rap.commissioners@lacity.org>
To: ALICE C < >

Thu, Aug 8, 2024 at 10:37 AM

Good morning,

Thank you for contacting the Board of Recreation and Park Commissioners Office, your email will be forwarded to the Commissioners and staff.

On Thu, Aug 8, 2024 at 10:29 AM ALICE C < > wrote:

Dear **Board of Recreation and Parks commissioners:**

I encourage the use of a non-animal model and a ban on animal-based entertainment.

It is my understanding that the City of Los Angeles Department of Recreation and Parks commissioners are receiving lots of pressure from equestrians to bring animal-based entertainment back to the former Griffith Park Pony Rides and Petting Zoo site.

Now is the time to stand up for animal rights and stop any form of animal exploitation. **Animals shouldn't be exploited for entertainment at this location.**

Thank you,
Alice Chien

Sent from my iPhone



Rap Commissioners <rap.commissioners@lacity.org>

Re: Please Do Not Allow Animal Entertainment in Griffith Park

1 message

Rap Commissioners <rap.commissioners@lacity.org>
To: "Kelly Wood SCHOOL, Inc." <

Fri, Aug 9, 2024 at 7:37 AM

Good morning,

Thank you for contacting the Board of Recreation and Park Commissioners Office, your email will be forwarded to the Commissioners and staff

On Thu, Aug 8, 2024 at 8:01 PM Kelly Wood SCHOOL, Inc. < > wrote:

Please use a non-animal model for pony rides/petting zoos and issue a ban on animal-based entertainment for Griffith Park.

Constituents want an animal-free model in Griffith Park and a ban on all animal-based entertainment. There is no acceptable option for a concession stand that exploits animals. Forcing animals into situations in which they're used to entertain noisy crowds is oppression, and it's time the city moved on from this cruel, antiquated practice.

Manipulating animals against their will for ticket sales shows a lack of empathy for their well-being, leading to poor living conditions and inadequate care, as we saw with the former pony rides and petting zoo.

Council Member Nithya Raman would like to push more responsibility onto LA Animal Services, even though it is in the midst of a crisis and can't keep up with its current duties. Animal shelters are over capacity and calls for assistance are pouring in and often going unanswered. The city doesn't have the time or other resources to monitor the treatment of animals at public exhibits.

The city's lack of oversight of Griffith Park Pony Rides and Petting Zoo meant that elderly ponies suffered from dehydration, untreated urgent dental problems, hoof ailments, and saddle sores yet were still forced to work.

Thank you,
Kelly Wood

Confidentiality Notice: The information in this e-mail, including any attachments, is considered confidential and proprietary and is intended only for the recipient(s) listed above. Any use, dissemination, distribution, copying, or storage of this e-mail and attachments except by or on behalf of the intended recipient is prohibited. If you have received this email in error, please notify the sender immediately by replying to this email. Thank you.



Rap Commissioners <rap.commissioners@lacity.org>

Re: Please don't bring back pony rides

1 message

Rap Commissioners <rap.commissioners@lacity.org>

Thu, Aug 8, 2024 at 3:43 PM

To: Steve & Karen & Ben Spiegel

>

Good afternoon,

Thank you for contacting the Board of Recreation and Park Commissioners Office, your email will be forwarded to the Commissioners and staff.

On Thu, Aug 8, 2024 at 3:16 PM Steve & Karen & Ben Spiegel <

> wrote:

For years, it depressed me and my family to drive through Griffith Park and see those hot, tired ponies going around and around in a circle. Not only was it a dismal life for the ponies, but these rides taught generations of children that animal exploitation was "fun" and "entertainment."

My family and I urge you not to allow this cruel and outdated activity back into Griffith Park. The Park already has train rides, a merry-go-round, and a wonderful playground - there is no need to subject ponies to a miserable existence.

Thank you for considering these comments.

The Spiegel Family
Burbank, CA



Rap Commissioners <rap.commissioners@lacity.org>

Re: Please prohibit pony rides in Griffith Park

1 message

Rap Commissioners <rap.commissioners@lacity.org>
To: Dominick Falzone <

Fri, Aug 9, 2024 at 7:38 AM

Good morning,

Thank you for contacting the Board of Recreation and Park Commissioners Office, your email will be forwarded to the Commissioners and staff

On Thu, Aug 8, 2024 at 10:38 PM Dominick Falzone <

> wrote:

I am a Los Angeles city resident. I urge you to prohibit pony rides in Griffith Park.

The last time that Griffith Prk had a pony ride consession, elderly ponies had to work, even while they were suffering from dehydration, urgent dental problems, hoof ailments, and saddle sores.



Rap Commissioners <rap.commissioners@lacity.org>

Re: PLEASE USE NON-ANIMAL MODELS FOR ENTERTAINMENT!

1 message

Rap Commissioners <rap.commissioners@lacity.org>
To: JASON NAKAGAWA <

Fri, Aug 9, 2024 at 7:36 AM

Good morning,

Thank you for contacting the Board of Recreation and Park Commissioners Office, your email will be forwarded to the Commissioners and staff

On Thu, Aug 8, 2024 at 5:31 PM JASON NAKAGAWA <

> wrote:



Rap Commissioners <rap.commissioners@lacity.org>

Re: Pony's

1 message

Rap Commissioners <rap.commissioners@lacity.org>

Thu, Aug 8, 2024 at 11:40 AM

To: Alliance for animals <

>

Cc: Mehmet Berker <mehmet.berker@lacity.org>, Jennifer Hull <jennifer.hull@lacity.org>

Good morning,

Thank you for contacting the Board of Recreation and Park Commissioners Office, your email will be forwarded to the Commissioners and staff.

On Thu, Aug 8, 2024 at 11:10 AM Alliance for animals <

> wrote:

Zohra Fahim

President and Founder of Los Angeles Alliance for Animals

Begin forwarded message:

From: elva luna <

>

Date: August 8, 2024 at 10:28:39 AM PDT

To:

Subject: Pony's

Please don't use animals for public entertainment, have a heart and STOP

The animal abuse 🙏🙏🙏🙏🙏🙏🙏🙏🙏🙏🙏🙏🙏🙏🙏🙏🙏🙏🙏🙏🙏🙏🙏🙏🙏🙏🙏🙏



Rap Commissioners <rap.commissioners@lacity.org>

Re: STOP ANIMAL ABUSE 🙏

1 message

Rap Commissioners <rap.commissioners@lacity.org>

Thu, Aug 8, 2024 at 11:39 AM

To: Alliance for animals <

Cc: Mehmet Berker <mehmet.berker@lacity.org>, Jennifer Hull <jennifer.hull@lacity.org>

Good morning,

Thank you for contacting the Board of Recreation and Park Commissioners Office, your email will be forwarded to the Commissioners and staff.

On Thu, Aug 8, 2024 at 11:10 AM Alliance for animals <

> wrote:

Zohra Fahim

President and Founder of Los Angeles Alliance for Animals

Begin forwarded message:

From: elva luna < >
Date: August 8, 2024 at 10:29:34 AM PDT
To:
Subject: STOP ANIMAL ABUSE 🙏

Sent from my iPhone

- Constituents want an animal-free model in Griffith Park and a ban on all animal-based entertainment. There is no acceptable option for a concession stand that exploits animals. Forcing animals into situations in which they're used to entertain noisy crowds is oppression, and it's time the city moved on from this cruel, antiquated practice.



Rap Commissioners <rap.commissioners@lacity.org>

Re: the Exploitation of Animals at Griffith Park

1 message

Rap Commissioners <rap.commissioners@lacity.org>

Thu, Aug 8, 2024 at 11:54 AM

To: Bru Muller <

>

Good morning,

Thank you for contacting the Board of Recreation and Park Commissioners Office, your email will be forwarded to the Commissioners and staff.

On Thu, Aug 8, 2024 at 11:48 AM Bru Muller <

> wrote:

Hello,

As LA residents, we ABSOLUTELY do NOT want animal-based entertainment at Griffith Park & request a citywide ban on using animals for entertainment.

There's no acceptable option for a concession stand that EXPLOITS ANIMALS. Forcing animals to entertain noisy crowds is oppression & highly stressful, & it's time the city moved on from this cruel, antiquated practice.

LA Animal Services is in the midst of a crisis and can't keep up with current duties. Shelters are over capacity, & calls for assistance often going unanswered. The city doesn't have the time or other resources to monitor the treatment of animals at public exhibits.

Thank you,

Bru Muller
Aina Dumlao



Re: Thoughts on Griffith Park Pony Rides after Six Weeks in Europe

1 message

Rap Commissioners <rap.commissioners@lacity.org>

Wed, Jul 31, 2024 at 7:48 AM

To: "rebecca <

>

Good morning,

Thank you for contacting the Board of Recreation and Park Commissioners Office, your email will be forwarded to the Commissioners and staff.

On Tue, Jul 30, 2024 at 6:38 PM rebecca <

<

> wrote:

Dear Commissioners,

My name is Rebecca Beech and I am a 26 year non-equestrian resident of Los Feliz CD4. I have been a regular at the RAP Commission meetings for a year and a half, advocating for the return of the Griffith Park Pony Rides with change and innovation.

During the months of May and June, I missed some RAP meetings because I went on two trips to Europe with my adult kids and grandchildren. During my travels, I sought out equestrian and live animal experiences for my grandchildren because I knew they would love them and I also wanted to take this opportunity to engage in discussion and listen to people who run equestrian activities and petting zoos and farms in France, Germany, Austria, and Switzerland.

In Paris, I took my 5 and 7 year old grandchildren to the pony rides in Luxembourg Garden. The pony rides are usually open on Wednesdays, Saturdays and Sundays and holidays when French children are not in school and they attract a diverse cross section of Parisian residents very representative of the diversity of the city. It was an exhilarating experience walking with my grandchildren as they rode ponies through the beautiful park. Children and their parents and friends gathered along the path to watch and wave and just smile at us.

In a RAP meeting in the spring, we were told by an animal rights activist that the City of Paris had voted to shut down the pony rides in the city. The situation on the ground is somewhat more nuanced. Pony rides continue in Luxembourg Garden, Bois de Boulogne, Parc de Monceau, and Levallois La Planchette.

I later had a phone conversation with the people at Anima Poney (animaponey.com) the French pony riding organization which operates pony rides in and around Paris. The woman I spoke with said that pony rides will continue at Luxembourg Garden for sure for two years. After that, she said "let's see; maybe after, I don't know." She noted that Luxembourg has a "different Senat" which I understand to be a different administration so they are not subject to the same vote.

She said that they have had difficulties with the City of Paris and with animal rights activists who demand a "non-animals model" and are "very powerful." The website of her organization notes that they lost the opportunity to have the rides at various parks in the city because the City of Paris voted "to please some anti-species fundamentalists." She went on to tell me in the conversation that it is very difficult because the animals rights activists are "unfair" and make claims which are untrue. She believes that the vote to

end pony rides in some parks in Paris occurred because the animal rights activists made claims of abuse to city officials who do not understand about the care of animals, which caused them to believe the accusations. She believes very much that their ponies are well cared for and safe.

In Salzburg, Austria, my family and I went on a carriage ride through the city. I spoke with the people who gave us our ride and told them about what happened with the Griffith Park pony rides being shut down after a campaign of loud protests, false claims of abuse, and distortions of fact. He said "it's the same here" except the protestors do not have megaphones. He said that the protestors are out there once a week making claims of abuse. Salzburg is a much smaller city and has a strong equestrian history. The horses live very near to where the rides operate and the operators feel strongly that their horses are treated very humanely. They have a contract with the city for a number of years into the future so they are safe, for now.

In Switzerland, I took my kids and grandkids to a wonderful petting zoo and to a farm where my grandkids spent a very happy morning delighting in playing with the little goats and observing other animals. I also took them on a magical pony ride beside Lake Lucerne, just outside the city limits. Before the ride, the kids were coached to become comfortable with the ponies and then helped with grooming the ponies and only later were placed on the ponies, once they were ready. The young owner of the rides was upbeat about her pony riding, but acknowledged that animal rights activists in Switzerland had shut down pony rides in Lucerne.

In Germany we stayed at a farm house which had goats, chickens and a rooster, rabbits, guinea pigs, a dog, cats, and 13 ponies. Two mornings my grandchildren had therapeutic riding lessons and I had several conversations with their riding guides and with the resident owner of the farm. One of the riding instructors emphasized that "we have a very good concept" which involves a strong emphasis on animal welfare and a strong emphasis on the mutuality of the riding experience being good for both pony and rider. After the riding lesson, my grandchildren helped in putting the riding gear away and helped feed the pony a special post-ride treat.

I also stayed at an Airbnb in a rural area of Bavaria, Germany and the woman who operated it was retired from owning a small horse and pony ranch where she spent years teaching riding to children. She was an equestrian who had also been involved in rescuing abused dogs in Romania. She personally rehabilitated and re-homed 40 dogs from Romania. Currently, she and her sister have 9 dogs and 8 cats and chickens. They also have 2 foster children who live with them and enjoy the daily interaction with their animals and are learning about the daily care of their animal friends.

In many ways, these sisters exemplified the care for animals I observed in all the equestrians I met and talked to and listened to during my time in Europe. As I think about the Reimagined Griffith Park Pony Rides, I hope that we can come up with a pro-animal model which includes pony rides and equine therapy and a petting zoo. After six weeks with with four grandchildren, ages 18 months to 7 years., I am more firmly than ever in the PRO-ANIMAL-MODEL CAMP. Children can get tired of touring art museums and seeing great architecture, but they never get tired of animals.

Sincerely,
Rebecca Beech



Rap Commissioners <rap.commissioners@lacity.org>

Re: Additional comment about Water reuse project-San Pascual Park and San Rafael

1 message

Rap Commissioners <rap.commissioners@lacity.org>

Thu, Aug 1, 2024 at 1:25 PM

To: Yael Pardess <

>

Good afternoon,

Thank you for contacting the Board of Recreation and Park Commissioners Office, your email will be forwarded to the Commissioners and staff.

On Wed, Jul 31, 2024 at 11:13 PM Yael Pardess <

> wrote:

Parks and Recreation Commissioners
Mr De Leon

I submitted comments earlier and cannot attend Park and Recreation tomorrow's meeting in person. I am asking RAP and CD14 City Council to re-evaluate this project in light of the public's objection and let the public have a say.

Reading RAP's informational report, I find it strange that the public at large submitted 4 comments only till July 18th, when it was finally brought to the public's attention and many are speaking out and sending letters and questioning the validity and logic of this wasteful project. As far as I can tell, the public really cares about nature, preservation, green spaces, preserving archeological artifacts and had a lot to say in the last meeting. The 4 comments that RAP states having received are a testament that the public did not know enough to be able to comment!

Very few people were notified back in 2023, fewer read the communication during the holidays and fewer understood the scope.

A true outreach was not conducted and the public wants to stop this project, and re-evaluate it properly and be a part of the decisions.

Our public parks are not up for grabs

This whole project raises many questions.

- Why has the community at large not been fully involved from the very beginning of the project?
- Why does the public have not had a chance to approve the initial steps and backdoor agreements between cities to take possession of lands and exclude the public from access that we now enjoy?
- Is this project conducted in a manner that is open, honest and transparent?
- On RAP's PDF - it is stated on page 3, that you will approve the project "after" its construction...! In what world do projects get approved after the fact? The quote is: "*The board of commissioners (Board) shall approve the project final plans and accept the improvement upon the completion construction*" this is unrealistic and very very questionable!
- Why hasn't a proper EIR been conducted? How have all 3 cities by-passed CEQA? Having a small x in a box that states that there are no impact is not enough. We the public demand a proper EIR!!
- Why waste so much money and destroy such precious parks- in order to give free water to a golf course used by few people! Isn't it high time we rethink priorities in our global warming age and consider the wastefulness of grasses for a selected few members?
- Why create parks, that after their completion- are not accessible to the public? San Pascual will have a surrounding fence and an exterior trail that will not let anyone actually enjoy the trees, the shade or the water. The fence will not allow for a natural flow of wildlife either.
- Why create parks that have less large shade canopy or no shade at all in many areas, and are less diverse, plant wise? They are proposing an exposed park, with surrounding trees that animals cannot be safe in. MND states that Wildlife Movement impact is LESS THAN SIGNIFICANT! This is completely false by all accounts- destroying and disturbing a complete habitat will be very significant to wildlife movement. Additionally- if parks are fenced off- how can animals or people traverse them?

- The environmental impacts are very significant. But they are completely minimized or ignored on the MND report. See PDF pages 15-21. I am showing screen shots from the MND with my comments in red.
- It states that bird's nesting or migratory birds will be minimally affected. Removing 80% of trees that serve as habitat is not insignificant and can kill or impact hundreds of birds, and nest. You cannot mitigate a tree removal. the tree is gone and the bird is gone or dead.
- It states that bats habitat will be less than significant with mitigation. Same point- you remove the Palm trees- you remove their habitat! There is no mitigation here
- What will happen to the Arroyo downstream of the Golf course once all waters are diverted to it? Will the ecosystem of the channel die off? Has this been a consideration at all? Has Fish and wildlife actually seen and approve this project?

I'd like to add a few more points:

I reviewed all the trees that will be removed and replanted, and there are a few discrepancies from chart to chart or from page to page on the NMD report.

Number of trees replanted on one page does not match number of trees on another page.

It takes some detailed examination to discover the discrepancies.

If you want to take the time to review it- pages 3-4-5-7-8 in PDF attached.

What strikes me the most is that instead of 2 Arroyo Willows removed in San Pascual - the project proposes 62!

The willow is a fluffy tree bush. It does not really provide shade and was not originally part of San Pascual.

Why not replant Toyons and Black Walnuts that can actually create a natural native habitat?

Same for San Rafael- the replanting contains no Toyons or Black Walnuts.

I am asking you to please not approve this project and review carefully your decision.

We need parks, we need mature trees, we do not need wasteful project that benefit one small 12 acre Golf Course. It is simply wrong!

It will take 20-30 years for the heat bubble created by the project to become shaded forest again.

It should become a practice by our cities, that claim to care about trees, now that temperatures are rising and we need more trees - that mature trees simply should not be cut!

Thank you for your time.

Yael Pardess

Mt Washington Protected Tree Committee

ARROYO WATER REUSE PROJECTS

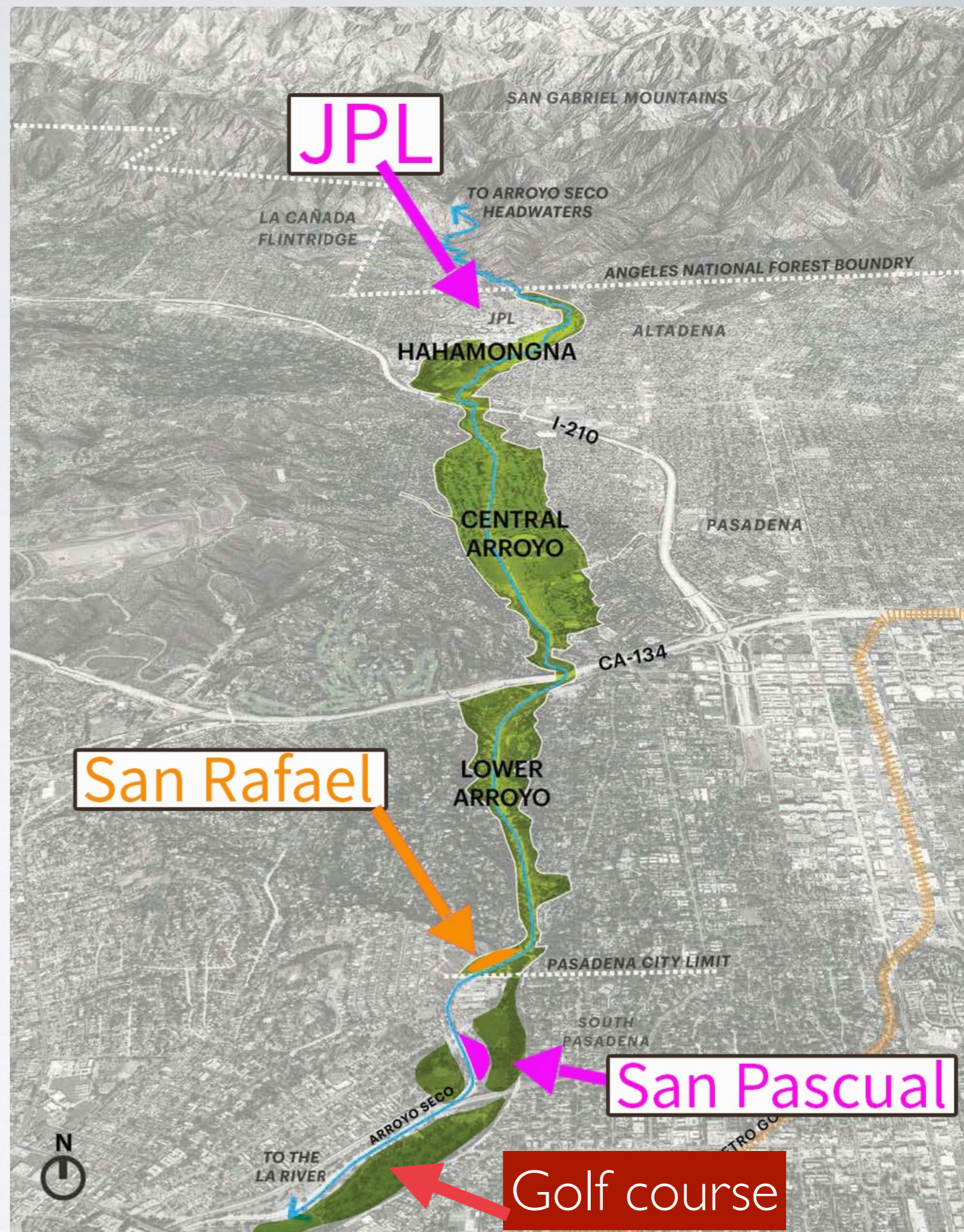
SAN RAFAEL AND SAN PASCUAL PARKS

Purpose- Purify water from pollutants in the the Arroyo
and from water run-off

Highlights and points to consider

Both Parks are part of a
Important wildlife
corridor

Destroying the natural
habitat during
construction is a major
impact to people and
wildlife



**Project aims to reduce impact on existing trees,
but will still remove 142 trees (42 protected)
(over 70% of all trees!)
53 trees will remain in place**

**TABLE 3
SUMMARY OF TREES**

Jurisdiction	Existing Trees within Site	Total Tree Removals	Protected Tree Removals	Required Tree Replacements
<i>San Rafael Site</i>				
Pasadena	29	6	6	20
<i>San Pascual Site</i>				
South Pasadena	141	121	27	128
Los Angeles	● 25	● 15	● 9	36
<i>San Pascual Subtotals</i>	166	136	36	164
<i>Project Totals</i>	● 195	● 142	● 42	184
Source: Psomas				

Total replacement trees= 193

BOTH PARKS

Page 20 MND

According to their chart, they are replanting on a rate of **1:1**

142 non protected removed = **142** replanted

42 protected removed = **42**

142+42=Total **184** (their chart)

They add **9** extra trees= **193** total replanting

In paragraph page **8** they state

they will replant a total of **246** trees and shrubs(**193** will be native)

As shown in Table 3, there were total of 195 existing trees surveyed within the Project sites. The Project's landscape concept proposes to plant a total of 193 native trees as well as native shrubs and groundcovers as part of landscaping activities. This would result in an estimated net total of 246 trees on the San Rafael and San Pascual sites, in addition to new native understory (i.e., shrubs and groundcover) plantings. No trees or other vegetation would be removed or trimmed as part of water harvester installation. These figures

San Rafael Park

Page 66 MND

29 trees surveyed

6 Elderberries removed

23 Trees will remain in place

61 native trees replanted

How many trees will be replanted ? 29 or 61



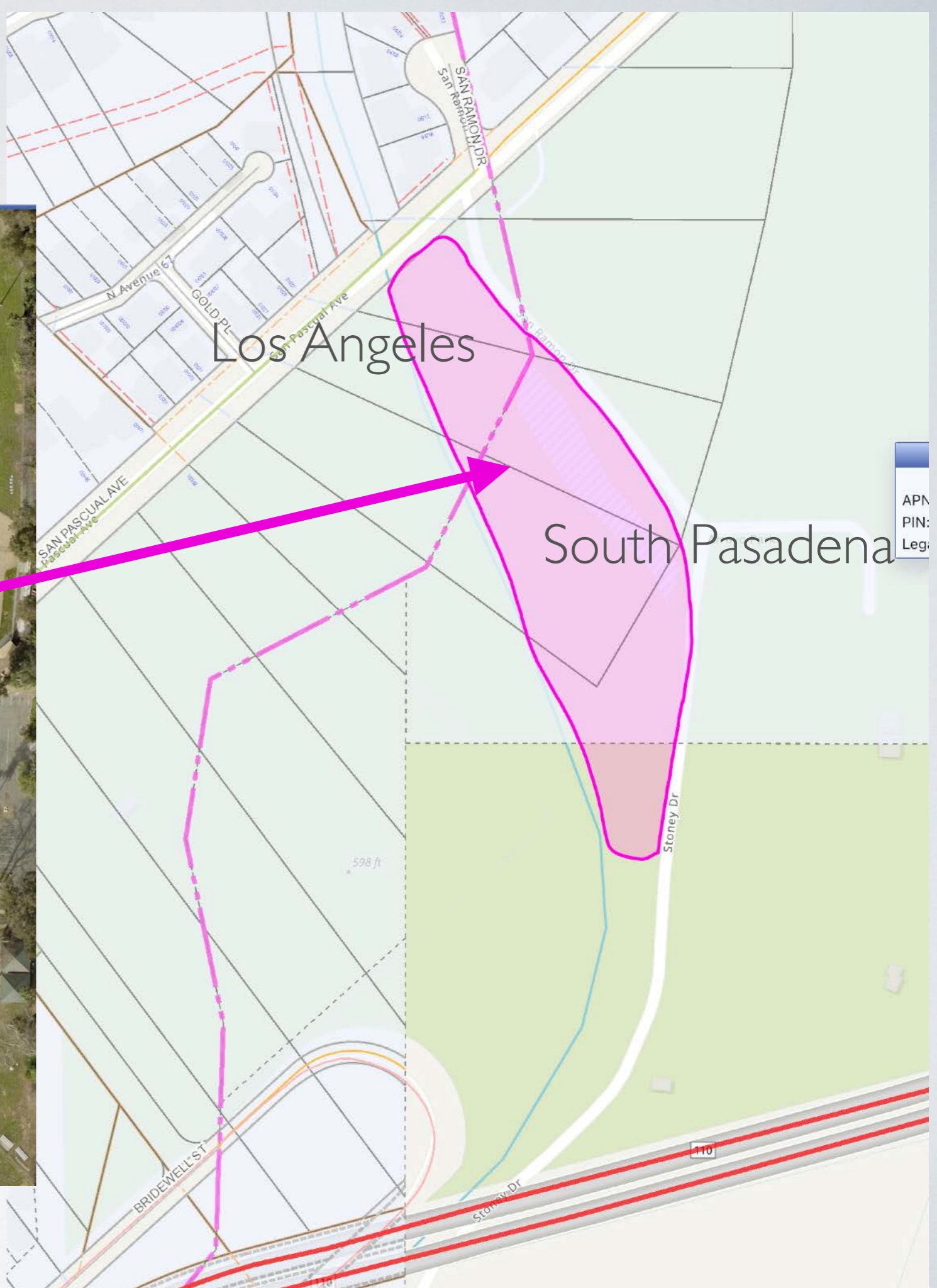
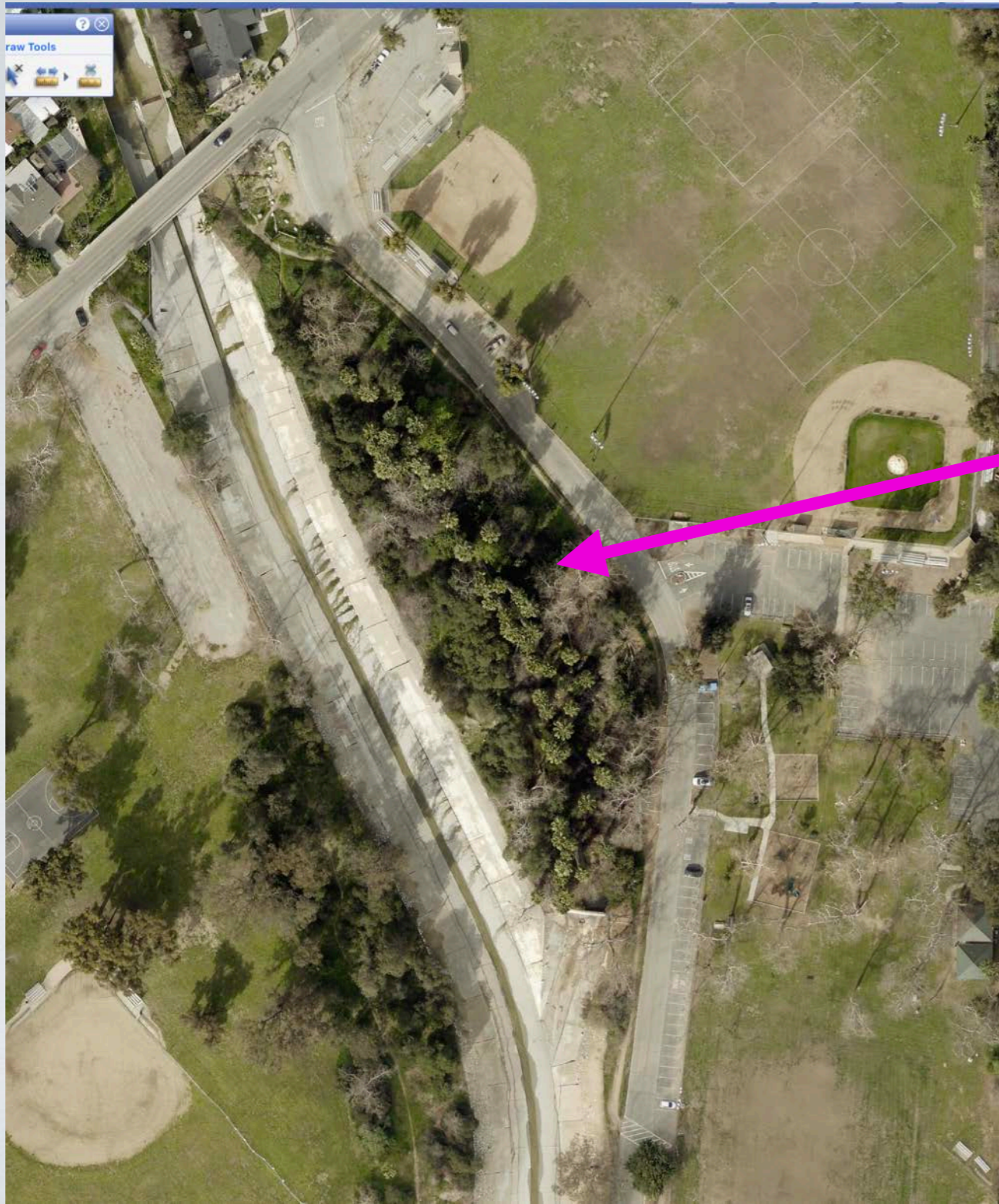
**TABLE 11
COMPARISON OF EXISTING PROTECTED TREES
AND PROPOSED TREES AT THE SAN RAFAEL SITE**

Tree Species	Quantity Removed	Quantity Proposed to be Planted
blue elderberry <i>Sambucus nigra ssp. caerulea</i>	6	6
coast live oak <i>Quercus agrifolia</i>	N/A	17
western sycamore <i>Platanus racemosa</i>	N/A	6
Totals	6	29

N/A = not applicable

San Pascual

A densely wooded park



San Pascual Park

Page 65 MND

166 trees surveyed

136 trees removed- 81%

36 protected trees- removed

100 trees- non protected- including 83 Mexican Palms-removed

132 Native trees replanted (page 34)

30 existing trees (native and non) remain in place

**TABLE 13
COMPARISON OF EXISTING PROTECTED TREES
AND PROPOSED TREES AT THE SAN PASCUAL SITE**

Tree Species	Quantity Removed	Quantity Proposed to be Planted
arroyo willow <i>Salix lasiolepis</i>	2	62
black willow <i>Salix gooddingii</i>	8	N/A
blue elderberry <i>Sambucus nigra ssp. caerulea</i>	13	26
coast live oak <i>Quercus agrifolia</i>	8	24
western sycamore <i>Platanus racemosa</i>	5	17
Totals	36	129

N/A = not applicable

3 trees discrepancy



San Pascual Park

**TABLE 13
COMPARISON OF EXISTING PROTECTED TREES
AND PROPOSED TREES AT THE SAN PASCUAL SITE**

Tree Species	Quantity Removed	Quantity Proposed to be Planted
arroyo willow <i>Salix lasiolepis</i>	2	62
black willow <i>Salix gooddingii</i>	8	N/A
blue elderberry <i>Sambucus nigra ssp. caerulea</i>	13	26
coast live oak <i>Quercus agrifolia</i>	8	24
western sycamore <i>Platanus racemosa</i>	5	17
Totals	36	129
N/A = not applicable		

Why so many low cover Arroyo willows instead of shade trees?

Why are no Black willows replanted?

Existing trees

13 Sycamores- 5 removed- 17 replanted

17 Live Oaks- 8 removed- 24 replanted

5 Toyons- no mention if removed or saved?

Why are they not replacing Toyons and Black Walnuts?

15 Blue Elderberries- 13 removed- 26 replanted

4 Arroyo Willows. 2 removed- 62 replanted!

8 Black Willows- 8 removed- none replanted

4 Shamel Ash- removed or saved?

None of the palms, carobs, peppers or Elms are replanted

San Pascual Park

Please examine this alternate area and save countless trees and a whole habitat

Area across from San Pascual is flat, has 1/3 of the trees and has a large vacant area



San Pascual Park

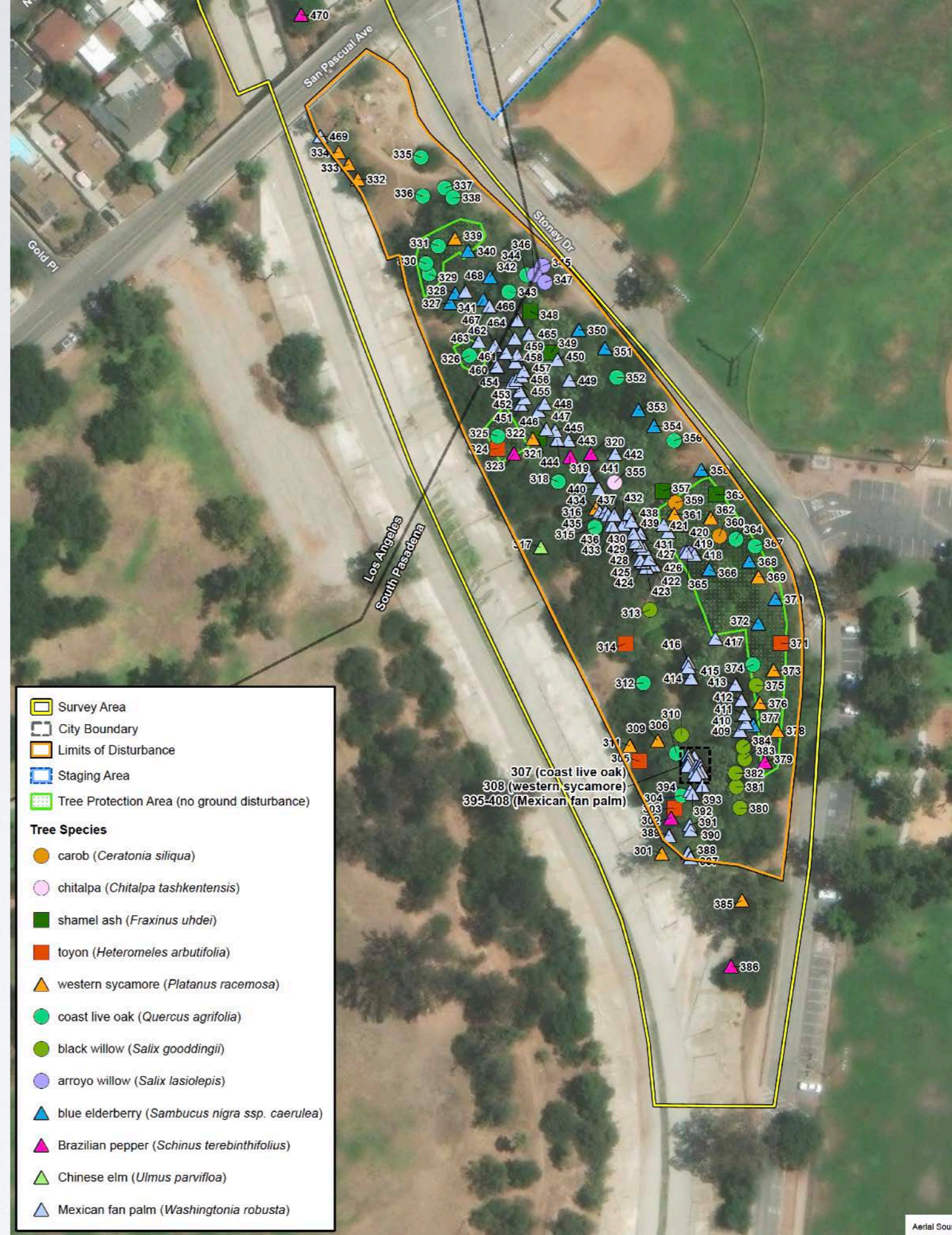
This is the area across the Arroyo, Note the vacant space, The south East side has a few Oaks and many non native trees- this could be a perfect alternative to San Pascual



San Pascual Park

- 13 Sycamores- 5 removed- 17 replanted
- 17 Live Oaks- 8 removed- 24 replanted
- 5 Toyons- removed or saved?
- 15 Blue Elderberries- 13 removed- 26 replanted
- 4 Arroyo Willows. 2 removed- 62 replanted!
- 8 Black Willows- 8 removed- none replanted
- 4 Shamel Ash- removed?
- None of the palms, carobs, peppers or Elms are replanted

Why so many Arroyo Willows?
Why not plant native shade trees ?

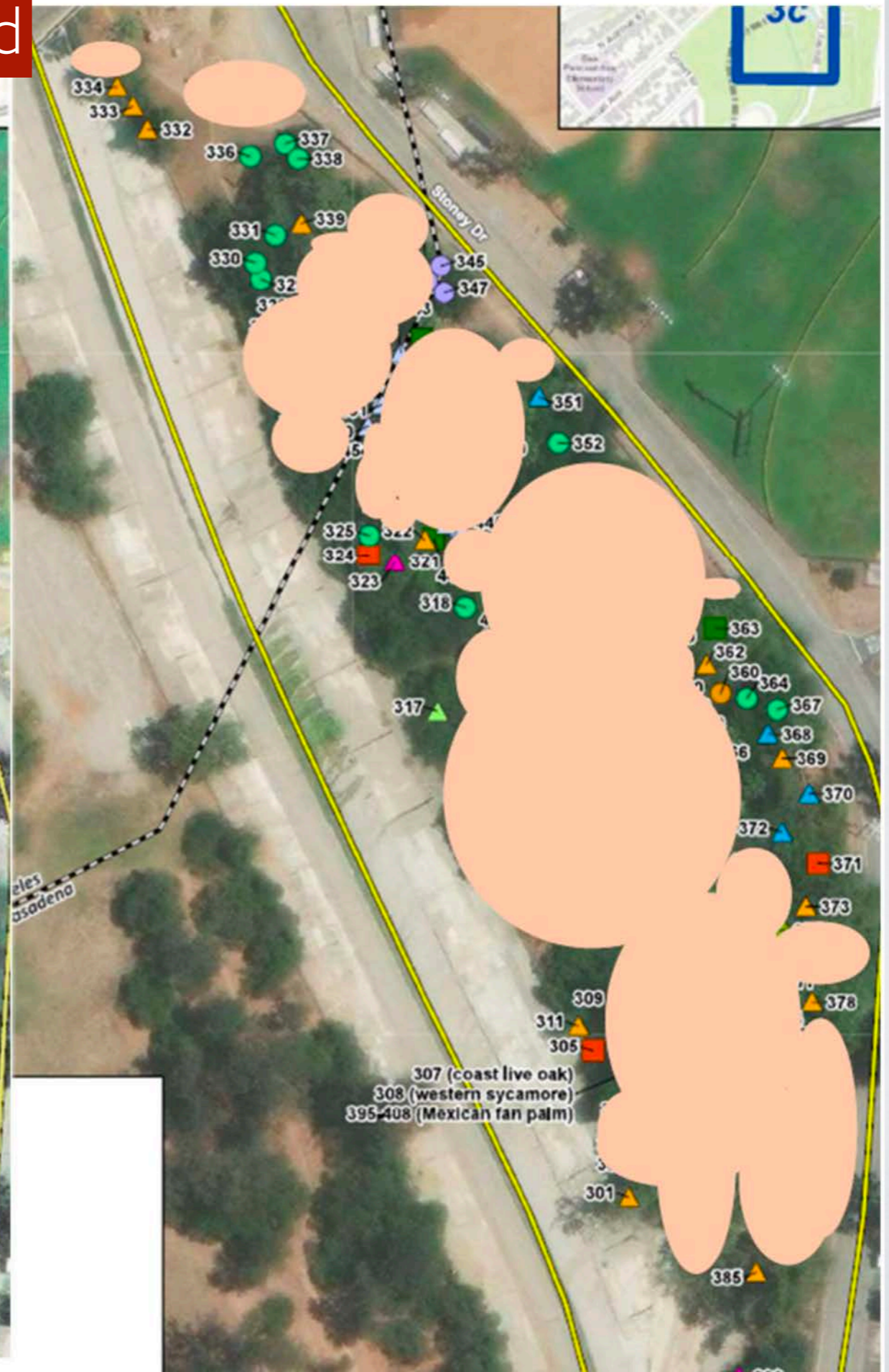
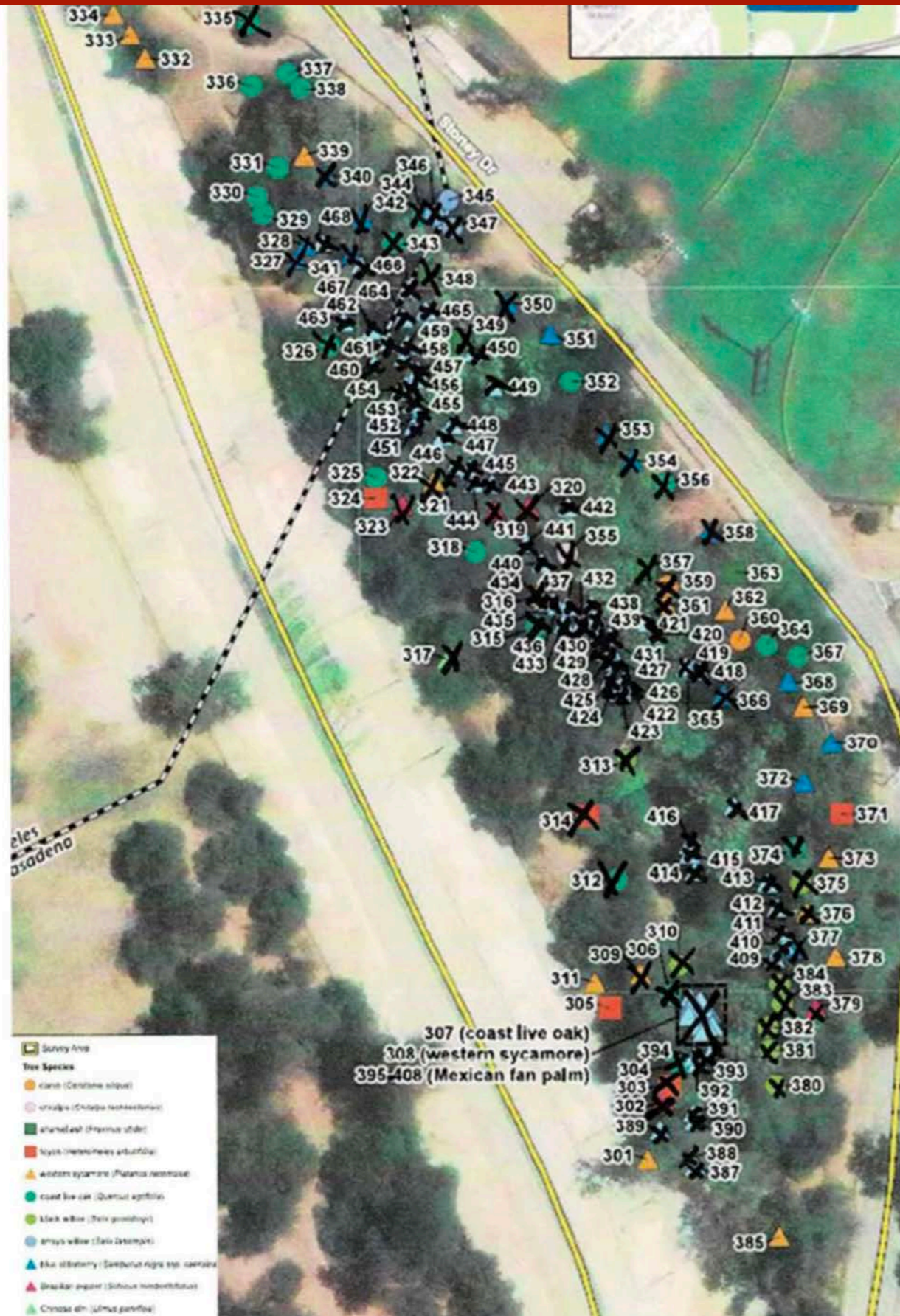


Tree Impacts at San Pascual Site

At left below trees to be removed X'd

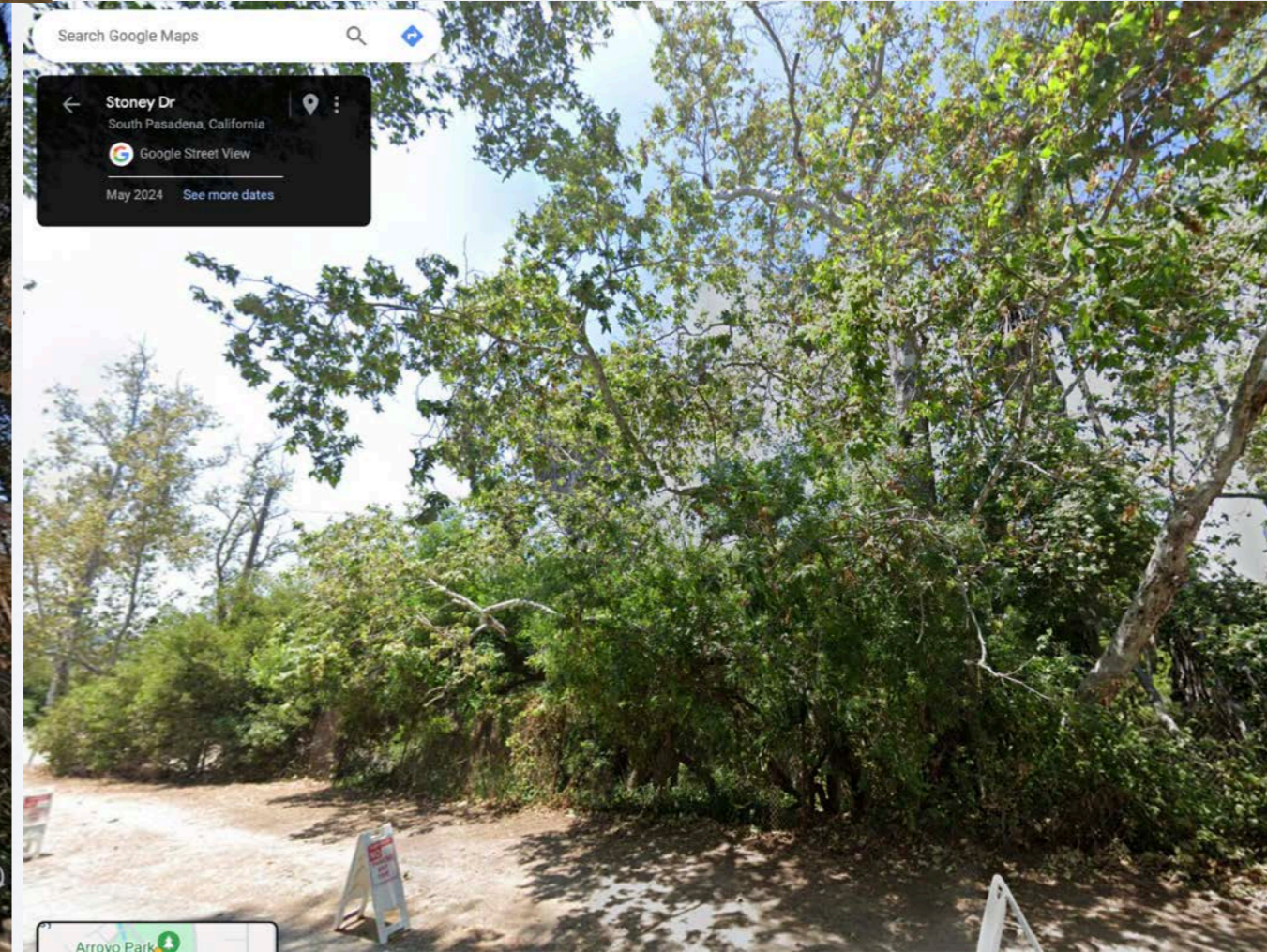
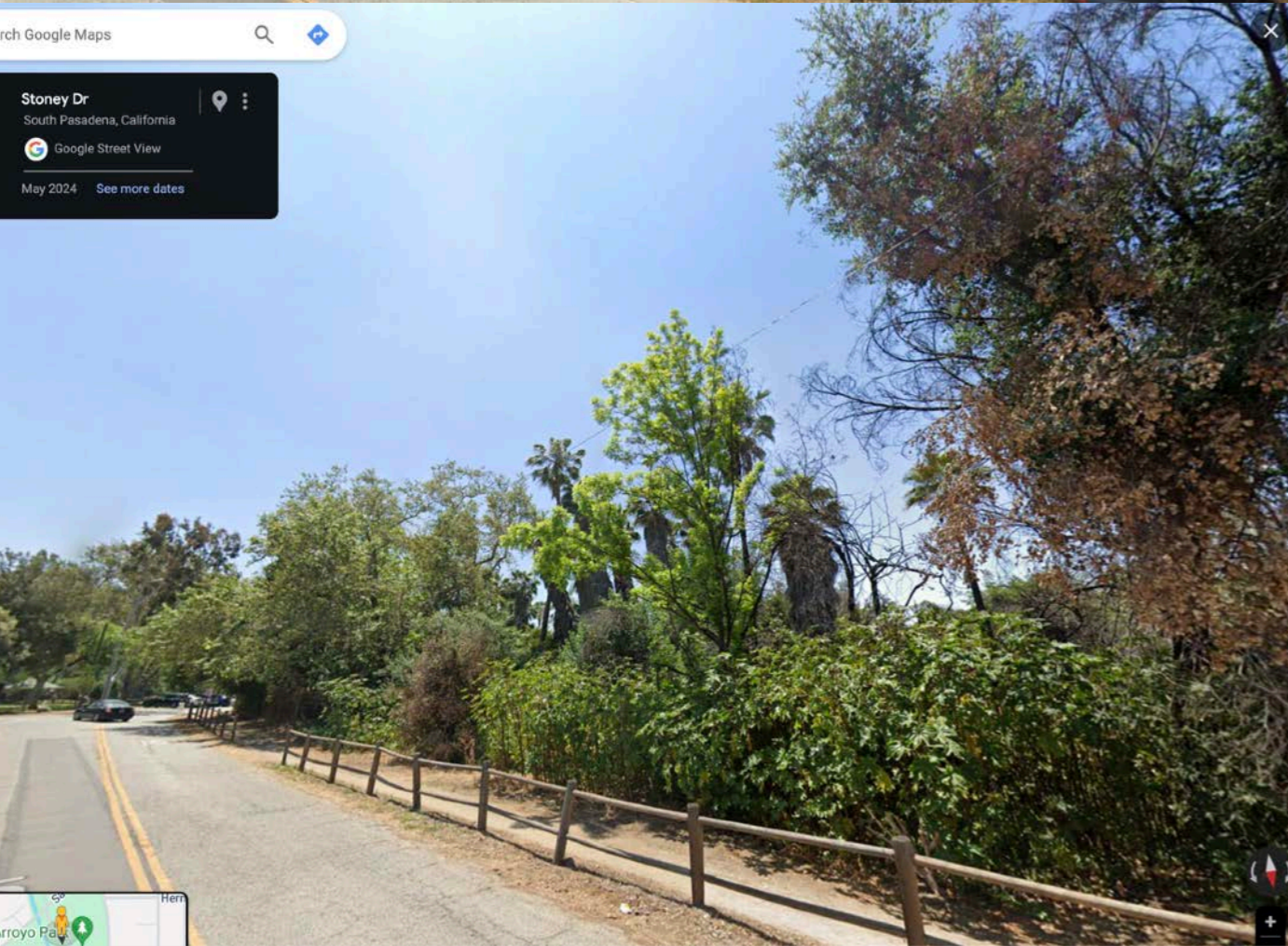
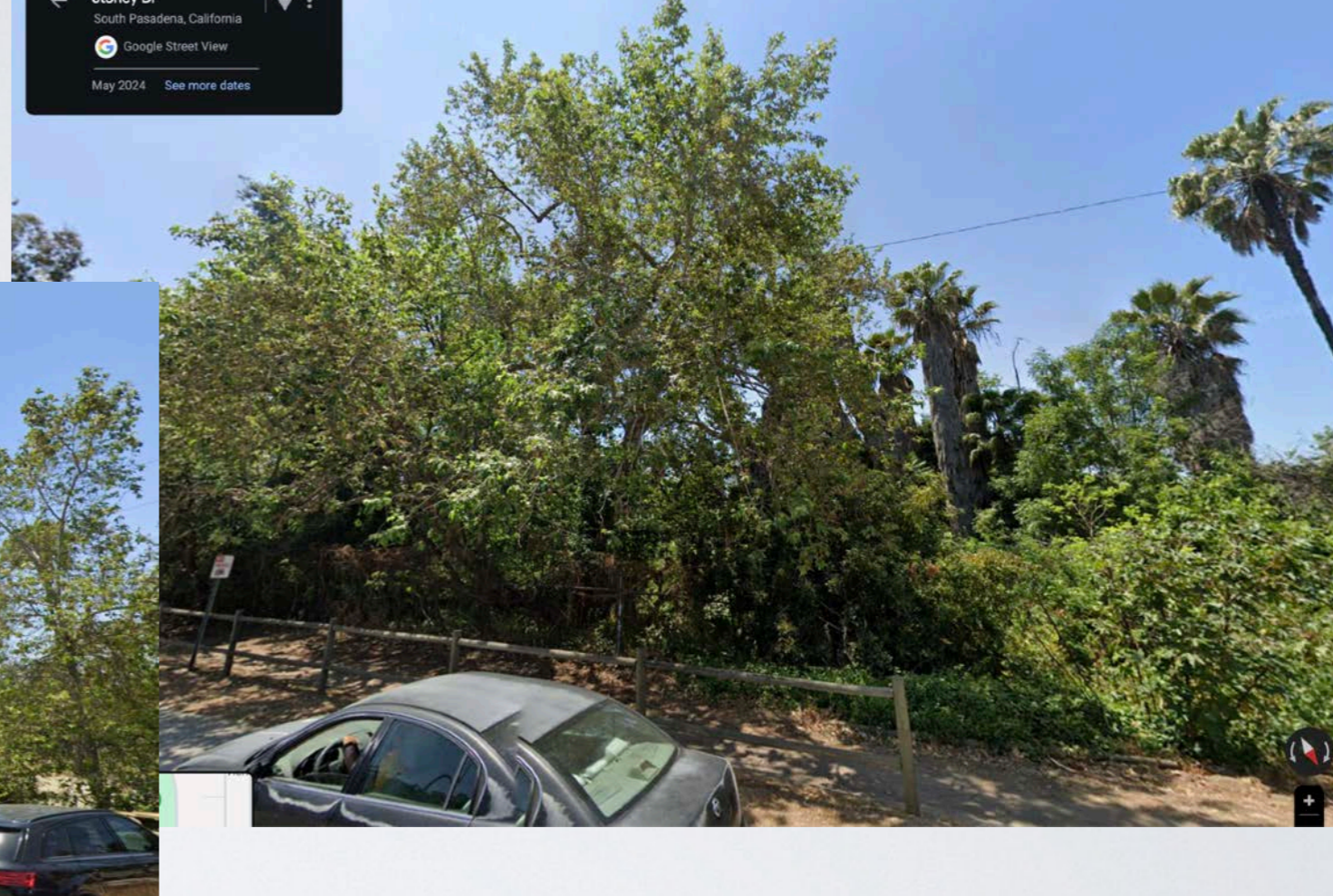
At right below, trees left after removals

81% of the trees will be removed



San Pascual Park

View from Stoney Dr



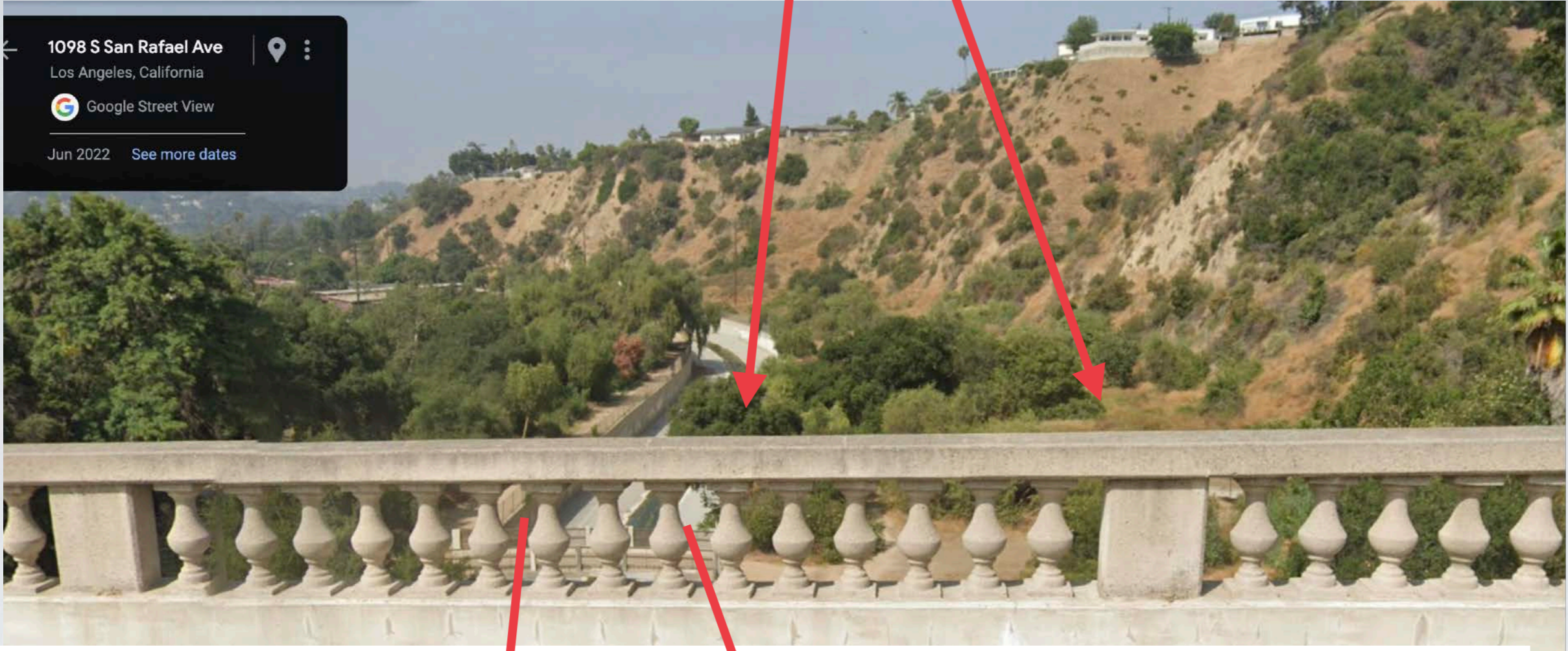
San Pascual Park

View from the Arroyo



San Rafael park

← 1098 S San Rafael Ave
Los Angeles, California
Google Street View
Jun 2022 See more dates



Negative impacts as per MND

	Potentially Significant Impact	Less than Significant with Mitigation	Less than Significant Impact	No Impact
Would the project:				
a) Have a substantial adverse effect on a scenic vista?	<input type="checkbox"/>	<input type="checkbox"/>	<input checked="" type="checkbox"/>	<input type="checkbox"/>

	Potentially Significant Impact	Less than Significant with Mitigation	Less than Significant Impact	No Impact
Would the project:				
b) Substantially damage scenic resources, including, but not limited to, trees, rock outcroppings, and historic buildings within a state scenic highway?	<input type="checkbox"/>	<input type="checkbox"/>	<input type="checkbox"/>	<input checked="" type="checkbox"/>



	Potentially Significant Impact	Less than Significant with Mitigation	Less than Significant Impact	No Impact
Would the project:				
c) In non-urbanized areas, substantially degrade the existing visual character or quality of public views of the site and its surroundings? (Public views are those that are experienced from publicly accessible vantage point). If the project is in an urbanized area, conflict with applicable zoning and other regulations governing scenic quality?	<input type="checkbox"/>	<input type="checkbox"/>	<input checked="" type="checkbox"/>	<input type="checkbox"/>

Removing tall 142 trees will be very impactful on the vistas of the area for at least 20 -50 years till trees grow to they original heights and provide shade and habitat.

	Potentially Significant Impact	Less than Significant with Mitigation	Less than Significant Impact	No Impact
Would the project:				
a) Have a substantial adverse effect, either directly or through habitat modification, on any species identified as a candidate, sensitive, or special status species in local or regional plans, policies, or regulations, or by the California Department of Fish and Game or U.S. Fish and Wildlife Service?	<input type="checkbox"/>	<input type="checkbox"/>	<input checked="" type="checkbox"/>	<input type="checkbox"/>



Very questionable impact assessments that should be examined in an EIR

Has Fish and Wildlife actually approve this project? If water is diverted from the Arroyo into the Golf course it will severely impact the stream down from San Pascual and Golf course. Animals that rely on the water will be severely impacted. Have actual water quantities diverted to Golf Course been examined and how much if at all will be left over?

	Potentially Significant Impact	Less than Significant with Mitigation	Less than Significant Impact	No Impact
Would the project:				
b) Have a substantial adverse effect on any riparian habitat or other sensitive natural community identified in local or regional plans, policies, regulations, or by the California Department of Fish and Game or U.S. Fish and Wildlife Service?	<input type="checkbox"/>	<input checked="" type="checkbox"/>	<input type="checkbox"/>	<input type="checkbox"/>



	Potentially Significant Impact	Less than Significant with Mitigation	Less than Significant Impact	No Impact
Would the project:				
c) Have a substantial adverse effect on State or federally protected wetlands (including, but not limited to, marsh, vernal pool, coastal, etc.) through direct removal, filling, hydrological interruption, or other means?	<input type="checkbox"/>	<input checked="" type="checkbox"/>	<input type="checkbox"/>	<input type="checkbox"/>



	Potentially Significant Impact	Less than Significant with Mitigation	Less than Significant Impact	No Impact
Would the project:				
d) Interfere substantially with the movement of any native resident or migratory fish or wildlife species or with established native resident or migratory wildlife corridors, or impede the use of native wildlife nursery sites?	<input type="checkbox"/>	<input checked="" type="checkbox"/>	<input type="checkbox"/>	<input type="checkbox"/>



Very questionable impact assessments that should be examined in an EIR

	Potentially Significant Impact	Less than Significant with Mitigation	Less than Significant Impact	No Impact
Would the project:				
a) Result in potentially significant environmental impact due to wasteful, inefficient, or unnecessary consumption of energy resources, during project construction or operation?	<input type="checkbox"/>	<input type="checkbox"/>	<input checked="" type="checkbox"/>	<input type="checkbox"/>

	Potentially Significant Impact	Less than Significant with Mitigation	Less than Significant Impact	No Impact
Would the project:				
c) Disturb any human remains, including those interred outside of formal cemeteries?	<input type="checkbox"/>	<input type="checkbox"/>	<input checked="" type="checkbox"/>	<input type="checkbox"/>

	Potentially Significant Impact	Less than Significant with Mitigation	Less than Significant Impact	No Impact
Would the project:				
b) Cause a substantial adverse change in the significance of an archaeological resource pursuant to Section 15064.5?	<input type="checkbox"/>	<input checked="" type="checkbox"/>	<input type="checkbox"/>	<input type="checkbox"/>

Very questionable impact assessments that should be examined in an EIR

Wildlife Movement

The Project site is located at the urban-wildland interface. Residential development, stables, community parks, parking lots, roadways, and flood control facilities surround the area. Within the Project vicinity, vehicular use is low and pedestrian and/or equestrian use is moderate to high in some areas and low in others. Vehicular use is typically restricted to maintenance vehicles along the channel and pedestrian use is mainly limited to the walkways east and north within the survey area.

Wildlife movement through the Project vicinity consist largely of species common in urban or suburban landscapes such as common birds, flying invertebrates, reptiles, and amphibians able to persist in small habitat patches and within developed lands as well as mammals such as coyote, common raccoon, striped skunk, and Virginia opossum, among others. Regional movement for these species may occur to a greater degree along green belts such as the Arroyo Seco but movement is also expected to occur throughout the suburban landscape. Implementation of the Project components would not create any additional constraints to wildlife movement and local wildlife are expected to move throughout the Project sites and surrounding areas in a similar manner to existing conditions. Therefore, impacts on wildlife movement would be considered less than significant, and no mitigation is required.

A total brush-off of the severe impact on the wildlife that lives in these areas

Migratory Bird Treaty Act

The federal Migratory Bird Treaty Act (MBTA) protects migratory birds and their nests and eggs, both common and special status. Bird species protected under the provisions of the MBTA are identified by the List of Migratory Birds (50 *Code of Federal Regulations* [CFR] §10.13, as amended). Birds have the potential to nest in the vegetation in the survey area, and their nests may be impacted by the Project. In addition to the MBTA, Sections 3503 and 3503.5 of the *California Fish and Game Code* protect nesting migratory birds and raptors. Impacts to nesting birds, both on and adjacent to the Project site, would be considered a significant impact prior to mitigation. Therefore, if Project construction, on either site, is initiated during the typical breeding season for nesting birds (i.e., February 1 to September 15) and nesting raptors (i.e., as early as January 1 for some raptors to June 30), MM BIO-3 requires a pre-construction nesting bird/raptor survey to ensure compliance with the MBTA and describes the process for protecting any active nests identified while construction is ongoing. If construction activities are initiated during the non-breeding season, implementation of MM BIO-3 would not be required and there would be no potential impact to nesting birds and raptors. With implementation of MM BIO-4, potential impacts to nesting migratory birds and raptors during their breeding seasons due to Project construction would be reduced to a less than significant level.

Impact will be severe regardless of “mitigating” nesting seasons.
Even if mature birds fly away- their habitat will be destroyed



Hooded Orioles and nests in the Palm trees (photos from San Pascual)

Roosting Bats

Several bat species may forage throughout the Project sites and roost in mature trees or under bridges. However, large roosting colonies have not been documented on or near the Project sites and are not expected to occur. Impacts on individual roosting bats or small colonies (i.e., less than ten individuals) are a potential constraint on development. Indirect impacts on individual roosting bats or small colonies may occur with Project implementation and may result in bats avoiding the site temporarily. Therefore, the Project would implement MM BIO-4, which requires a two-step tree removal process to be implemented to prevent bat mortality. With implementation of MM BIO-4, potential impacts to roosting bats would be reduced to a less than significant level.

	Potentially Significant Impact	Less than Significant with Mitigation	Less than Significant Impact	No Impact
Would the project:				
e) Conflict with any local policies or ordinances protecting biological resources, such as a tree preservation policy or ordinance?	<input type="checkbox"/>	<input checked="" type="checkbox"/>	<input type="checkbox"/>	<input type="checkbox"/>

Bats Habitat are the palm trees that will be removed- therefore the impact is severe



Rap Commissioners <rap.commissioners@lacity.org>

Re: Proposed Signage Across Westminster Ave in Venice

1 message

Sonya Young-Jimenez <sonya.young-jimenez@lacity.org>

Mon, Jul 29, 2024 at 1:11 PM

To: Kristen Schonert <

>

Cc: RAP.COMMISSIONERS@lacity.org

Thank you for reaching out and voicing your concerns. The location in the picture is not the location I envisioned. I am going to circle back with LAPD and other community members about the banner.

Sonya Young Jimenez

Superintendent of Venice Beach and West Region

City of Los Angeles

Department of Recreation and Parks

2459 Motor Avenue

Los Angeles, CA 90064

Cell: (213) 312-7966

Website: laparks.org



On Mon, Jul 29, 2024 at 12:27 PM Kristen Schonert <

> wrote:

Dear Sonya,

I hope this message finds you well. I am writing to express my concerns regarding a proposed project involving a "Welcome to Venice" banner to be hung across our street, specifically at the entrance to the Venice Beach boardwalk. This initiative, as I understand, is being pursued in partnership between a local businessman, Carl Lambart, who owns a hotel on our street, and the Parks and Recreation Department.

While I appreciate the intention of welcoming visitors to our vibrant community, I have several concerns about the execution of this project. The planned placement of the banner—spanning between two buildings—would obstruct and alter the iconic ocean view that many residents and visitors cherish. The boardwalk entrance is a significant landmark, and its unobstructed view of the ocean contributes greatly to the charm and character of our neighborhood. Altering this view with a large plastic banner would not only impact the aesthetic appeal but also detract from the area's natural beauty.

Additionally, the banner presents several potential issues:

- Visual Distraction:** The banner, likely made of plastic, is prone to flapping in the wind. This movement could be distracting and visually disruptive, further diminishing the area's appeal.
- Aesthetic Detriment:** Rather than enhancing the area, the banner is likely to detract from the scenic views that make our community unique. The visual clutter of a large, flapping sign could overshadow the natural beauty of our street.
- Lack of Tangible Benefit:** It is unclear how the banner will significantly benefit the community or improve the experience for visitors compared to the negative impact it will have on the view and overall ambiance.

Moreover, it appears that the businessman involved, Carl Lambart, may have undue influence over the decision-making process regarding this banner. The substantial impact on the local environment and view, coupled with the lack of

evident community consultation, raises questions about fairness and transparency in this process. It is crucial that any decisions involving changes to our public space take into account the views and concerns of those directly impacted.

In light of these concerns, I respectfully request that the Parks and Recreation Department ensure that this project undergoes a thorough review that includes:

1. **Community Input:** Conducting a forum or survey to gather feedback from local residents regarding the proposed banner.
2. **City Requirements for Permitting:** Ensuring that all necessary city regulations and permitting processes are followed, particularly those concerning signage that impacts public views and aesthetics.
3. **Consideration of Visual Impact:** Evaluating how the banner will affect the iconic ocean view and whether alternative solutions might achieve the same welcoming goal without compromising the visual integrity of our street.

Thank you for your attention to this matter.

Sincerely,

Resident Westminster Ave





Rap Commissioners <rap.commissioners@lacity.org>

Re: Comment Haunted Hayride 24-175

1 message

Rap Commissioners <rap.commissioners@lacity.org>

Tue, Jul 30, 2024 at 11:07 AM

To: Gerry Hans <gerry@friendsofgriffithpark.org>

Cc: Andrea Conant <andrea.conant@lacity.org>, Mehmet Berker <mehmet.berker@lacity.org>, Jennifer Hull <jennifer.hull@lacity.org>, Stefanie Smith <stefanie.smith@lacity.org>, Tracy James <tracy.james@lacity.org>, Brenda Aguirre <brenda.aguirre@lacity.org>, Matthew Rudnick <matthew.rudnick@lacity.org>, Darryl Ford <darryl.ford@lacity.org>

Good morning,

Thank you for contacting the Board of Recreation and Park Commissioners Office, your email will be forwarded to the Commissioners and staff.

On Tue, Jul 30, 2024 at 10:18 AM Gerry Hans <gerry@friendsofgriffithpark.org> wrote:

Good morning,

Please accept the attached public comment letter for Thursday's RAP Commission meeting.

Thank you,

Gerry Hans
President<https://www.friendsofgriffithpark.org/>



Friends of Griffith Park

P.O. Box 27573
Los Angeles, CA 90027-0573
friendsofgriffithpark.org

July 30, 2024

Board of Recreation and Park Commissioners
221 N. Figueroa St., Ste 300
Los Angeles, CA 90012

Re: 24-175 LA Haunted Hayride in Griffith Park

Dear President Renata Simril and Commissioners,

The Los Angeles Haunted Hayride Event will be in its 14th year in Griffith Park this Fall, yet the event's approval process has only come before the Board starting in 2022. As Friends of Griffith Park (FoGP) has voiced concerns regarding this event since 2010, we are grateful there is now a Commission Board agenda item for which public comment is allowed and heard. The following observations are rooted in financial accountability and fair business practice.

Event Growth

The event has grown exponentially since 2010. It now tests the carrying capacity of Griffith Park, in terms of its adverse impacts on recreational users, displacement, traffic congestion, and more. With this growth, has there been commensurate income to Griffith Park to offset these impacts? Is the income to RAP reasonable and justifiable versus the operator's profit? We don't know, since financial pro forma of the business operator is not public information. However, we suspect not.

The following pages show the duration of occupation of the historic Crystal Springs Picnic Grounds. The numbers actually understate the effective duration of supplanting, at least partially, Griffith Park recreationists. For example, in 2023 turf was destroyed and required re-seeding large areas which became unusable for months. Fortunately, a robust rainy season helped in the recovery. This event is no longer merely a "*month-long Halloween-oriented event.*" Over time, this event has become much more, and continues to expand. (See data on pages 4-5 of this letter)

2024's event may be particularly challenging with Crystal Springs Drive Phase 3 Transportation Plan (road diet) under construction, where two lanes will become one in both directions. Delaying possible emergency response vehicles is of priority concern.

Is a mere \$334,000, plus the small (and withheld) damage deposit, worth it? We don't believe it is. But we wonder if there could be a fair dollar amount. That assessment can only be made if there is transparency in the business operator's financial pro forma.

Back-of-envelope gross sales can be estimated, based upon the 70-75,000 attendees (per Stefanie Smith), with tiered pricing of \$36 to \$111. The ticket cost varies depending upon admission to one to three "haunted house attractions" and the level of "wait time" in lines. Let's say: 70,000 at a \$60 average. That's \$4.2 million. Should RAP be charging a fee less than 15% of gross income? Or possibly even less than 10%, if the gross income exceeds \$3.5 million?

If anything, a more sensible agreement would include a fee for the use of the space, with profit sharing collected on top. This would require transparency.

Why not an RFP?

Recently, we were told the LA Haunted Hayride event doesn't qualify for RFP since "*it is a one-time per year event and not ongoing.*" In our view, 14 years of operation, now knocking out roughly three months of picnic area usage each year, **seems** like "ongoing." Many businesses operate as concessions at far lower levels of financial stake, yet their RFP agreements may include paperwork of 200+ pages and include topics such as:

- Income reporting provisions
- Employment Opportunity Practices/Affirmative Action
- Compliance with Applicable Rules and Regulations (amplified sound, smoking)
- Availability of Employee Fidelity Bonds

Furthermore, RFPs are issued for businesses to compete regularly, such as tree removal work, construction, consulting, etc. While these are often temporary gigs, aren't they subject to the RFP process and business practice standards?

In fact, there is history of this Commission initiating RFPs for the Halloween event in both 2014 & 2015. While the March 2014 RFP (14-056) received proposals from two bidders, the RFP was subsequently cancelled and the proposals were rejected. Application fees were returned to the two competing bidders, one being the original Haunted Hayride permittee, then known as Ten Twenty-One Productions.

The RFP was re-initiated with Commission approval in March 2015 (15-054). However, no further action was taken, to our knowledge.

<https://www.laparks.org/sites/default/files/pdf/commissioner/2014/mar05/14-056.pdf>
<https://www.laparks.org/sites/default/files/pdf/commissioner/2015/mar19/15-054.pdf>

Errata:

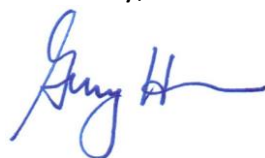
The Board Report Summary states: *“For the past thirteen years, RAP has issued permits to TFEG ABG LA JV LLC (Operator) to operate the LA Haunted Hayride Event and related attractions in Griffith Park.”*

Proposed corrections per publicly available records:

- The operator entities since 2010 include (at least): Ten Thirty-One Productions, LLC (California), Thirteenth Floor Entertainment, LLC (Colorado), 13FEG LA Holdings, LLC (Delaware), and for 2024, TFEG ABG LA JV LLC (Delaware).
- There was no Griffith Park event in 2020 due to COVID restrictions. Therefore, thirteen permits were issued over the past fourteen years.

We appreciate the Board’s consideration and deliberation on the above comments. We are well-studied on this event’s past in Griffith Park and could provide further citations, if needed.

Gratefully,

A handwritten signature in blue ink, appearing to read "Gerry H", with a stylized flourish at the end.

Gerry Hans, President

About Friends of Griffith Park:

Friends of Griffith Park is a non-profit 501(c)(3) charitable group that promotes the enlightened stewardship of Griffith Park so it can survive and thrive well beyond the 21st century. FoGP is committed to ensuring that Griffith Park, a public park and Los Angeles’ largest Historic-Cultural Monument, remain open, natural, and free to all citizens of Los Angeles.

Summary of Haunted Hayride Increased Occupancy of Crystal Springs

The below images are from Commission Board Reports in 2022, 2023, and 2024. (Blue – large, main portion of picnic grounds; Green (right) – triangular “Pettigrew” picnic area)

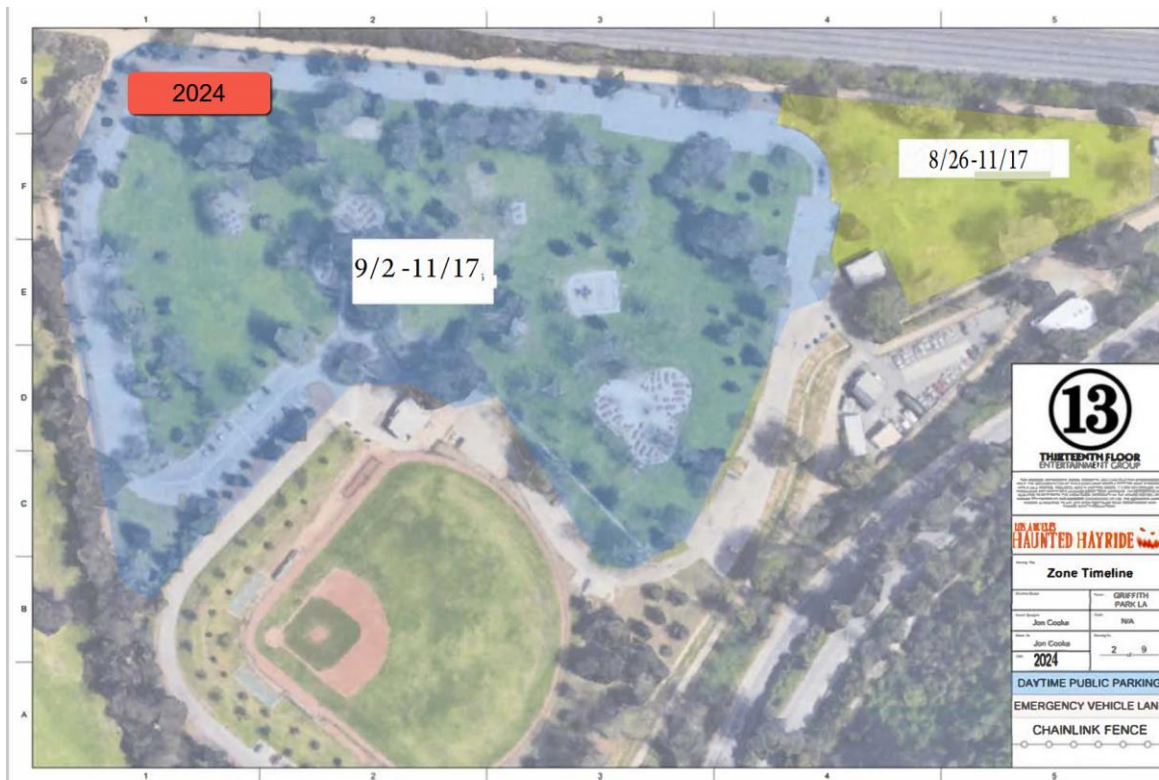
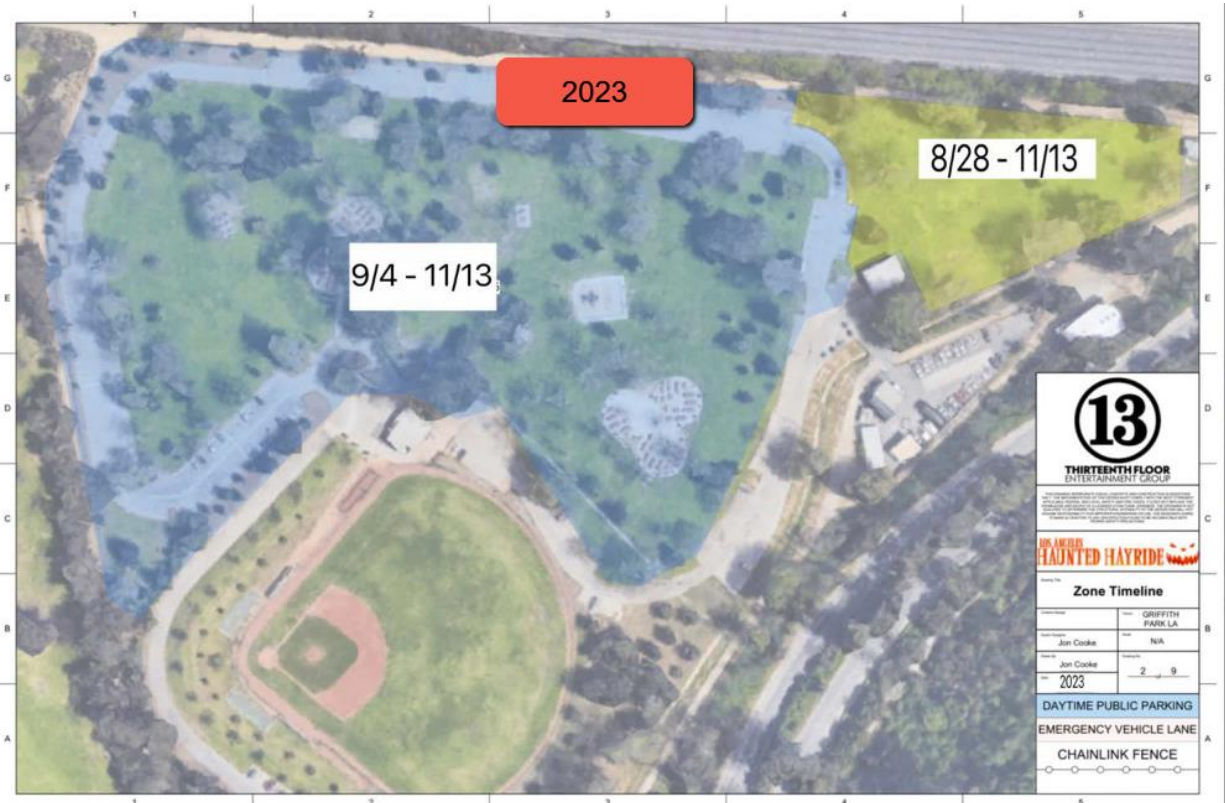
Occupancy of the large, main portion of Crystal Springs Picnic Grounds:

- In 2022, contract period 9/5 to 11/6 (57 days).
- In 2023, contract period 9/4 to 11/13 (64 days); **extended 7 days versus 2022.**
- For 2024, contract period 9/2 to 11/17 (70 days); **extended 6 days versus 2023.**

Occupancy of the triangular portion (Pettigrew) of Crystal Springs Grounds:

- In 2022, contract period 8/29 to 11/12 (70 days).
- In 2023, contract period 8/28 to 11/13 (72 days); **extended 2 days versus 2022.**
- For 2024, contract period 8/26 to 11/17 (78 days); **extended 6 days versus 2023.**







Rap Commissioners <rap.commissioners@lacity.org>

Re: LA Haunted Hayride

1 message

Rap Commissioners <rap.commissioners@lacity.org>
To: Nicole Alvarez < >

Wed, Jul 31, 2024 at 7:40 AM

Good morning,

Thank you for contacting the Board of Recreation and Park Commissioners Office, your email will be forwarded to the Commissioners and staff.

On Tue, Jul 30, 2024 at 4:05 PM Nicole Alvarez < > wrote:

Hello. My name is Nicole Alvarez. I am an on air personality on KROQ, a radio station that is a heritage brand and sewn into the cultural fabric of Los Angeles. Throughout the years KROQ has been an integral part of many eras, many artists, and many lives. I have been a voice and representative for Los Angeles for 21 years and as such I have the unique privilege of interacting with our communities on a day to day basis. I know the people. They know me. We rely on each for support and information. We are part of each other's daily lives and so my job is to make sure that I listen. I am always listening to the people because they come to me to talk. They come to tell me what they love and what they don't, what they need and what is missing. They come to me when they are happy, angry, sad, overjoyed, and just bursting with some emotion they know they can share with me. I know Los Angeles.

It has come to my attention that there are a group of individuals who question The existence of the LA Haunted Hayride. I support people questioning things as we all should, but it has also come to my attention that these individuals are ignoring the benefits of the big picture because they themselves feel inconvenienced. I have to say something. It is my duty. I am writing on behalf of the people. This is where the privilege of my job comes in. I get to talk to the average person daily. The average hard working person who has a family and who looks forward to this event every year, an event, that is one of the only affordable and family friendly things left to do during the holidays. I have to emphasize affordable because so much is not anymore and families are losing. Kids are being deprived of core memories and experiences because the world as we know it has become financially out of reach for so many. This event is a spectacular production meant to bring people together in celebration of creativity and experience. It's wonderment. It's theater of the mind. It's what we all hope for when we dream about the holidays with family and friends. How amazing that we are so lucky as to have access to that and be able to afford it!

I remember the first time I went to the hayride. It took my breath away. I went with a group of friends and we were kids again. We were running around and laughing so hard we cried. We go every year. It's our tradition. 16 years later, I'm taking my 8 year old daughter. She still talks about it and she still wears the hoodie she bought that night. I'll never forget walking around with her and drinking hot chocolate and her squeezing my hand so hard every time she got startled which always ended in the giggles. I can't imagine an LA where I can't give that to her and then also still be a kid with my own group of friends.

KROQ has roughly 1.1 million listeners a day. For 21 years I have gotten to know the people. Every single year since the hayride started, these people begin counting down from as early as August. Their #1 favorite thing to do on Halloween in LA is the hayride. This hasn't changed. All you have to do is check social media during the hayride season and you'll see that everyone is there. It's families, all your friends, celebrities, their families...it's an institution much like KROQ. It's just part of us now.

I understand concern, but I think that anyone complaining should really rethink and reframe their views. Maybe it's a group of people who don't like being even remotely inconvenienced for a few weeks out of the year. I doubt inconvenience is even the right word. Maybe they just need something to complain about. I don't know. What I do know

is that we should be coming together as a community and seeing how we can help the organizers make it even bigger if that is what they want because it is an absolute joy to have.

In conclusion, this is an affordable experience that also provides health to the local economy and jobs for all the people working it. It provides an escape, a chance to be part of Halloween, fun for the whole family, and a thing that brings groups of friends together. Anything that does this much good should be celebrated and protected. I love my listeners and I want them to know I went to bat for us all.

Thank you so much,

Nicole Alvarez

KROQ



Rap Commissioners <rap.commissioners@lacity.org>

Re: URGENT: Support for Los Angeles Haunted Hayride's Continued Presence in Griffith Park

1 message

Rap Commissioners <rap.commissioners@lacity.org>
To: Alex Gruenfelder < >

Thu, Aug 1, 2024 at 1:22 PM

Good afternoon,

Thank you for contacting the Board of Recreation and Park Commissioners Office, your email will be forwarded to the Commissioners and staff.

On Wed, Jul 31, 2024 at 8:32 PM Alex Gruenfelder < > wrote:
Dear Board of Commissioners,

My name is Alex Gruenfelder: I'm an Echo Park Neighborhood Councilman, a political and community organizer, and a longtime stilt walker at the Los Angeles Haunted Hayride. I am writing on behalf of a coalition of elected officials and community members, currently totaling more than 138 people, who have been organized in the last twenty-four hours to mobilize in defense of the Haunted Hayride being allowed to stay in Griffith Park.

It has come to our attention that a small group of activists plans to lobby against the permitting of the Haunted Hayride and its CEQA exemption at tomorrow's meeting. I have brought this matter to the attention of the office of Councilwoman Nithya Raman, among numerous others, to emphasize just how important this event is to the prosperity of our community. As performers and community members, we care deeply about this issue and would like to be present to show our support at tomorrow's hearing.

All of these concerns are detailed in an open letter that I authored on behalf of our group. I am not being paid for this effort, and it is in no way authorized by 13th Floor Entertainment Group; instead, I am leading this on behalf of concerned community members and Hayride employees who want to see this beloved attraction remain open.

A PDF of the letter is attached to this email. If you'd like to view the document digitally, which will be continually updated as dozens of new signatures flow in by the hour, you can find it [here](#). I will be appearing at the meeting tomorrow and will have physical copies for all of you as well.

Thank you so much for your time and attention. I am hopeful that this concern can be settled at tomorrow's meeting.

Best,
Alex Gruenfelder

Save The Los Angeles Haunted Hayride!

Dear Board of Recreation and Park Commissioners,

We, the undersigned, are writing to express our strong support for the Los Angeles Haunted Hayride's continued presence in Griffith Park. This cherished event has become a beloved Halloween tradition and a vital source of employment for our community.

Each year, the Los Angeles Haunted Hayride employs hundreds of working Angelenos, providing much-needed jobs and supporting local businesses. From performers, technicians, and other production crew to local vendors and support staff, this event proves a yearly source of millions of dollars from diverse employment opportunities. The economic benefits ripple outwards, providing economic returns for nearby street vendors, restaurants, shops, and other local enterprises that see increased patronage during the Halloween season.

Should the Los Angeles Haunted Hayride be banned from Griffith Park, the economic fallout would be severe and far-reaching. The loss of this event would mean the immediate elimination of hundreds of seasonal jobs, leaving many local workers without crucial income. Additionally, the ban would directly affect a wide array of small businesses that thrive during the Hayride season, all of which rely heavily on the influx of visitors. The financial impact would reverberate throughout our community, undermining the stability of our local economy. In these challenging times, it is more important than ever to support events that provide substantial economic benefits and employment opportunities for Angelenos.

We understand that a small group of activists has raised concerns about the event's impact on Griffith Park. While we acknowledge the importance of preserving our public spaces, it is crucial to recognize that the Los Angeles Haunted Hayride has operated responsibly and with respect for the park's environment. The event organizers have consistently complied with city regulations, implemented sustainability measures, and taken steps to minimize any potential disruptions.

Griffith Park is a vast and versatile space that accommodates various activities and events without compromising its natural beauty and accessibility, including the Haunted Hayride and Shakespeare in the Park. The Haunted Hayride's presence in the park is temporary and carefully managed to ensure that it does not interfere with other park activities or cause lasting harm to the environment. With this in mind, we urge the Board to consider the broader benefits of allowing the Los Angeles Haunted Hayride to remain in Griffith Park. It is not only a phenomenal economic engine for the city, but a key part of the cultural framework that makes our city – and our park – so special.

We humbly ask the Board to approve the license agreement for the 2024 Los Angeles Haunted Hayride and its related attractions, as written. Together we can guarantee that Griffith Park remains a welcoming space for all. And in the spirit of transparency and friendship, the Los Angeles Haunted Hayride would welcome Commissioners and their guests to visit anytime.

Signed,

Elected Officials and Political Figures:

Konstantine Anthony

City Councilman and Former Mayor
City of Burbank, CA

Alex Gruenfelder*

At-Large Representative
Echo Park Neighborhood Council

Mansoor Khan

At-Large Representative and Former Chair
Echo Park Neighborhood Council

Dr. Daniel Lee

Former Mayor
City of Culver City, CA

Dan Mancini

Former District 2 Representative
Echo Park Neighborhood Council

Hannah Reinartz* and Andrea Napier

Co-Chairs, Political Action Team
IATSE Local 705

Robert J. Sexton

Former Business Representative
Hollywood United Neighborhood Council

Community Members:

Yvette Ace, Hancock Park
Mis Aguirre, South Gate
Colleen Alexander, The Valley
Sergio Armenta, Los Angeles
Rob Balchunas, Northridge
Jacob Balken, Simi Valley
Daniel Bell, San Pedro
Jennifer Bendik, Hollywood
Derrick Blacknall, Valley Village
Holly Blair, Lake Elsinore
Ruby Bonilla, Inglewood
Andrew Nathan Blocher, Burbank*
Candy Buck, Anaheim
Josiah Bushner, Northridge
Nicole Caceres, Highland Park
Summer Castro, North Hollywood
Pamela Chau, San Gabriel Valley
Yukta Chidanandan, San Diego
Jairo Claustro, Burbank
Michael Colón, Whittier
Lauren Ann Curtis, Burbank
Dorian Curtis-Likens, Upland
AJ Danna, Burbank*
Katrina Dehoyos, Santa Clarita
Spencer Dorsey, Encino
Giselle Douglas, Northridge
Tamar Faggen, Mid-City
Gabriela Felipe, North Hollywood*
Tyler Felipe, Santa Clarita
Gradey Fillion, Simi Valley*
Virginia Danielle Foster, Burbank
Rachid Frihi, North Hollywood
Samantha Garcia, Huntington Beach*
Mearygrace Gato, Van Nuys
Lisa Goetz, San Pedro
Sophie Goldstein, North Hollywood
Maria Gonsalez, Lennox
Jem Gonzales, Winnetka
Michelle Gonzalez, Covina

Natasha Gonzalez, Ontario
Brian Gordon, Monrovia
Amber Green, Glendale
Aidan Greenberg, Beverly Grove
Ethan Greenberg, Beverly Grove
Mason Greenberg, Beverly Grove
Tondi Greenberg, Beverly Grove
Kim Gruenenfelder, Echo Park
Suzi Hale, Hollywood
Zoë Hall, North Hollywood
Chris Hallett, North Hollywood
Rachel Harmon, Valley Village
Thomas Harrington, Glendale*
Roy Jacob Hasal, Lake Elsinore
Michelle Herrera, Whittier
Wes Hockemeyer, Los Angeles*
Michelle House, Culver City
Britney Huerta, North Hollywood*
Zayda Huiza, Los Angeles
John Alan Hulbert, Portland*
Chelsea Jensen, Reseda
Stephanie Johannesmeyer, Rosamond
Beckie Jolley, Fullerton
Brittany Joyal, Encino*
Jennifer Juarez, Paramount
Xochilt Khoury, Burbank
Michael Krychiw, Hollywood*
Dafne Labrada, Los Angeles*
Kristy Liou, Torrance
Jose Lopez, Los Feliz
Liz Lopez, Los Feliz*
Kali Macabe, North Hills*
Cambria Mancil, Los Angeles
Francesca Mangalili, Hollywood
Ysabela Mangalili, Hollywood
Violet Marroquin, Bakersfield
Tiffany Martin, Los Angeles*
Noah Martinez, Anaheim
Valerie Martinez, Upland
Mason Scott Miller, North Hollywood

Daniel Monclova, Montclair
Ligia Monroy, Los Angeles
Judith Montelongo, Los Angeles
Esther Montes, Reseda
Monica Morales, Encino
Alyx Munoz, Covina
Garrett Orness, Thousand Oaks*
Forrest Orta, Anaheim
Laura P., Alhambra
Bianca Palomo, Long Beach
Melissa Pereyra, Corona
Nicholas Phillips, Long Beach*
Melanie Pleasant, Anaheim
Richelle Ponce, Los Angeles County
Rhodora Porter, Hollywood
Channing Prall, Sherman Oaks*
Kenneth Prieto, North Hollywood*
Lennon Ramsey, North Hollywood*
Mary Elizabeth Rangel, Canyon Lake
Isabelle Razo, South Central*
Connor Reilly, Newbury Park
Christine Reyes, Santa Ana
Miranda Riddle, Valley Village*
Fiedorra Rielly, El Monte
Amanda Gomez Rivera, Alhambra
Megan Rhoden, North Hollywood
Noemi Ruano, Corona
Rutan, Hollywood*
Ilyssa S., Los Angeles
Ani Sancianco, Chino Hills
Michael Sanchez, Koreatown
Christopher Sandoval, Montebello*
Kathryn Saucedo, Montebello*
Justin Selig, Burbank*
Matthew Serrano, Valley Glen
Urvi Shah, Westwood
Adam Shows, Yucca Valley
Brian Smith, Echo Park
Breanna Smith-Cadena, Calabasas*
Acacia Solis, Azusa

Stephanie, Reseda
Mara Strauss, Echo Park
Valeria Tril, Santa Clarita
Monique Torres, Carson
Carolyn Townsend, Atwater Village
Jeremy Trejo, Northridge
Jennie Tuliao, Downey*
Yesenia V., Claremont
Alejandro Verduzco, Panorama City*
Rachel Waifu, Van Nuys
Aline Reanna Waiserman, Reseda*
Amanda Yost, North Hollywood

You can sign our open letter [here](#).

Current or former employee of the Los Angeles Haunted Hayride.

This letter was created on behalf of a coalition of elected officials and working Angelenos to save the Los Angeles Haunted Hayride, and was drafted and organized by Alex Gruenfelder. This effort is unpaid and unaffiliated with 13th Floor Entertainment Group.



Rap Commissioners <rap.commissioners@lacity.org>

Re: Homeless Encampment Issue

1 message

Rap Commissioners <rap.commissioners@lacity.org>
To: Jacob Blankenship <

Wed, Jul 31, 2024 at 8:04 AM

Good morning,

Thank you for contacting the Board of Recreation and Park Commissioners Office, your email will be forwarded to the Commissioners and staff.

On Wed, Jul 31, 2024 at 7:46 AM Jacob Blankenship <

> wrote:

Hello,

Like many other people I know, I was ecstatic to hear the news that Governor Newsom was ordering the clearing of all homeless encampments. Finally, we would be able to walk safely on our streets again. Literally someone at my synagogue was very recently held at knifepoint walking to work at the synagogue day-school recently.

I know you feel good about yourselves thinking "I am a good person because i am not taking down their tent." I PROMISE it is the **opposite**. The encampments are full of abuse and activity that is much more harmful - NOT ONLY TO THE HOMELESS, BUT TO THE INNOCENT PEOPLE AROUND THEM.

I beg of you, go ask your constituents how they feel. You are all making this decision for them. Ask the parents if they think their children should have to walk by drug infested tents on their way to school. I **GUARANTEE** you, **0%** would say yes. You are very clearly acting as small dictators on a power trip while the people are suffering.

I bet you are thinking "thats not true." If you are so confident, **PUT IT UP TO A VOTE.**

I promise, you are not doing something politically popular, morally superior, or ethical. The only reason i can think that you won't follow the order is because you are getting money from this issue. We keep getting taxed, and things keep staying the same.

I know how this will go. You will deny the order, the homeless issue will stay the same (or get worse as the people from San Francisco are like "we can go camp in LA now because they still allow it), and you will ask the constituents for more money. This is all a grift. I know it, everyone knows it, and you know it. So stop lying about it and at least be honest about it.

We must find a way to impeach or vote out every one of you. I look forward to figuring out how.

CHANGE. YOUR. DECISION.

Jacob



Rap Commissioners <rap.commissioners@lacity.org>

Re: Dorothy and Benjamin Smith Park- Concerned Citizens

1 message

Raul Leon <raul.leon@lacity.org>

Thu, Aug 1, 2024 at 1:36 PM

To: Brenda Aguirre <brenda.aguirre@lacity.org>

Cc: Javier Solis <javier.solis@lacity.org>, Stefanie Smith <stefanie.smith@lacity.org>, Joe Losorelli <joe.losorelli@lacity.org>, Rap Commissioners <rap.commissioners@lacity.org>, Sean Hinton <sean.hinton@lacity.org>, Cathie Santo Domingo <Cathie.SantoDomingo@lacity.org>

Good afternoon Brenda, I had staff check for encampments in the park today, and none were reported. The last encampment removal was on 7/10/24.

Thank you,

On Thu, Aug 1, 2024 at 9:48 AM Brenda Aguirre <brenda.aguirre@lacity.org> wrote:
+Raul Leon for scheduling of cleanups as needed.



Brenda D Aguirre MPA

Assistant General Manager, Los Angeles

Department of Recreation and Parks

Special Operations Bureau

(213) 202-2633

221 N Figueroa St. Los Angeles, CA 90012

www.laparks.org AND www.SwimLA.org

On Thu, 1 Aug 2024 at 09:44, Javier Solis <javier.solis@lacity.org> wrote:

Thank you for sharing.

Yes, lots of vandalism and illegal activity at the park.

Definitely a challenge for staff to keep up, but nonetheless, Construction Div. and Maintenance Op. Will continue to do their best.

+Joe Losorelli, Chief Rangers for enforcement purposes.

On Wed, Jul 31, 2024, 11:37 AM Stefanie Smith <stefanie.smith@lacity.org> wrote:

Including +Javier Solis

On Wed, Jul 31, 2024 at 11:34 AM Rap Commissioners <rap.commissioners@lacity.org> wrote:

Good Morning,

Please see the email. For your information.

Thank you!

----- Forwarded message -----

From: **Sterman, Michael** <

Date: Wed, Jul 31, 2024 at 9:02 AM

>

Subject: Dorothy and Benjamin Smith Park- Concerned Citizens

To: RAP.COMMISSIONERS@LACITY.ORG <RAP.COMMISSIONERS@lacity.org>

Cc: Marie.Lloyd@lacity.org <Marie.Lloyd@lacity.org>, Renata.Simril@lacity.org <Renata.Simril@lacity.org>, Luis.Sanchez@lacity.org <Luis.Sanchez@lacity.org>, Fiona.Hutton@lacity.org <Fiona.Hutton@lacity.org>, Benny.Tran@lacity.org <Benny.Tran@lacity.org>, Hector Vega <hector.vega@lacity.org>, Kylie Jansen <kylie.jansen@lacity.org>

Dear All,

I am copying members from the Office of Councilmember Hugo Soto-Martinez that I have been in communication with as well as the commissioners of the Department of Recreation and Parks.

I hope all is well with you. I am contacting you regarding the Dorothy and Benjamin Smith park. This park has been a constant nuisance ever since the fence was removed and before the fence was put up. The park attracts numerous transients that use the park for drug use, camping, and various other activities that prevent it from being a resource for the community members to enjoy. Without constant supervision, this park will ultimately end up the same way it was prior to the park being fenced (it is already getting close to that point).

This park is no longer a park. All of the vegetation is brown, all the trees and walls surrounding the park have been graffiti tagged, and every day tens of transients from the project room key across the street use this park to circle up and do drugs, play loud music, act erratically towards anyone that enters the park, and on numbers cases have threatened members of the community for being in the park. When you call LAPD it takes them 2 days to come out and the CIRCLE team will temporarily ask them to leave for the people to either leave and come right back or just say no. What is the point of this park if it is a constant eye sore and just used for illegal activities? The park should be fenced again until the city departments can figure out a better use for it as it is clear that the city services cannot prevent the above mentioned issues with its current use. Countless community members are too scared to use the park and there are countless vacancies for buildings in the immediate area due to the growing problem. No one wants to live next to a park like this that will eventually turn into a large encampment again.

Another petition has been started to fence this park by community members living in the area. There has to be a solution as the current one is not working. I encourage you all to drive by the park and take a look for yourselves. There has to be a better way. The police and CIRCLE teams just tell the unhoused to move out of the park only for them to return hours later. It is a bandaid fix to an everlasting problem.

See below link

<https://www.change.org/p/petition-to-fence-and-gate-dorothy-benjamin-smith-park-located-at-7020-franklin-ave-c16bffa6-1b32-44af-86ff-e2d0a49ad23a>

Thank you for your time

Michael Sterman



Rap Commissioners <rap.commissioners@lacity.org>

Re: Dorothy and Benjamin Smith Park- Concerned Citizens

1 message

Rap Commissioners <rap.commissioners@lacity.org>
To: "Stermann, Michael" <

Wed, Jul 31, 2024 at 11:31 AM

>

Good morning,

Thank you for contacting the Board of Recreation and Park Commissioners Office, your email will be forwarded to the Commissioners and staff.

On Wed, Jul 31, 2024 at 9:02 AM Stermann, Michael <

> wrote:

Dear All,

I am copying members from the Office of Councilmember Hugo Soto-Martinez that I have been in communication with as well as the commissioners of the Department of Recreation and Parks.

I hope all is well with you. I am contacting you regarding the Dorothy and Benjamin Smith park. This park has been a constant nuisance ever since the fence was removed and before the fence was put up. The park attracts numerous transients that use the park for drug use, camping, and various other activities that prevent it from being a resource for the community members to enjoy. Without constant supervision, this park will ultimately end up the same way it was prior to the park being fenced (it is already getting close to that point).

This park is no longer a park. All of the vegetation is brown, all the trees and walls surrounding the park have been graffiti tagged, and every day tens of transients from the project room key across the street use this park to circle up and do drugs, play loud music, act erratically towards anyone that enters the park, and on numbers cases have threatened members of the community for being in the park. When you call LAPD it takes them 2 days to come out and the CIRCLE team will temporarily ask them to leave for the people to either leave and come right back or just say no. What is the point of this park if it is a constant eye sore and just used for illegal activities? The park should be fenced again until the city departments can figure out a better use for it as it is clear that the city services cannot prevent the above mentioned issues with its current use. Countless community members are too scared to use the park and there are countless vacancies for buildings in the immediate area due to the growing problem. No one wants to live next to a park like this that will eventually turn into a large encampment again.

Another petition has been started to fence this park by community members living in the area. There has to be a solution as the current one is not working. I encourage you all to drive by the park and take a look for yourselves. There has to be a better way. The police and CIRCLE teams just tell the unhoused to move out of the park only for them to return hours later. It is a bandaid fix to an everlasting problem.

See below link

<https://www.change.org/p/petition-to-fence-and-gate-dorothy-benjamin-smith-park-located-at-7020-franklin-ave-c16bffa6-1b32-44af-86ff-e2d0a49ad23a>



Rap Commissioners <rap.commissioners@lacity.org>

Re: FOLLOWING UP - Please respond

1 message

Rap Commissioners <rap.commissioners@lacity.org>

Thu, Aug 1, 2024 at 1:16 PM

To: print <

>

Good afternoon,

Thank you for contacting the Board of Recreation and Park Commissioners Office, your email will be forwarded to the Commissioners and staff.

On Wed, Jul 31, 2024 at 6:47 PM print <

> wrote:

Dear LACity Officials,

The mornings have been horrible in the park. Full on dog gathering. In the evenings a lot of golden retrievers and doodles regardless if camp is on or not. So the real update is nothing changes. Its ridiculous that the dogs are off leash while the children are out practicing soccer, enjoying the grass area and a nice Summer evening.

When will some relief come for Oakwood park? We have asked for assistance with this ongoing daily problem.

Half the field is a dog park on the 7th/broadway side/zone.

We have been ignored by all Los Angeles City officials when it concerns these off leash dogs all day everyday. Dog poop everywhere and children and adults stepping in the dog poop.

Where is the meeting with the LA City officials that was promised to the concerned parents and people of the Venice Community? We haven't been responded to about that meeting.

We're demanding assistance with this off leash dog problem that exists daily with no one from LA City helping the Venice Community.

We need to hear from LA City Officials ASAP.

Laddie Williams
Concerned Soccer Grandma
Original Save Venice member

[Sent](#)[Sent from AOL on Android](#)



Rap Commissioners <rap.commissioners@lacity.org>

Re: Request for reduced permit fee

1 message

Rap Commissioners <rap.commissioners@lacity.org>
To: Mariann Shea

Thu, Aug 1, 2024 at 1:33 PM

Good afternoon,

Thank you for contacting the Board of Recreation and Park Commissioners Office, your email will be forwarded to the Commissioners and staff.

On Thu, Aug 1, 2024 at 10:50 AM Mariann Shea < > wrote:

Hello!

My name is Mariann Shea and I am part of the PTA at Rockdale Elementary School. Our LAUSD Title 1 school is located in Eagle Rock, 90041.

We are hosting a welcome back picnic on Saturday 8/17 at the Yosemite Rec Center. I spoke with Jennifer Rockwell, the director in charge, and the permit fee for our event is \$175. Because we are a Title 1 school and most of our enrichment programs are funded by the PTA, we have only a small budget to host this event. I am reaching out to request a reduced or waived permit fee to allow us to focus our money on food/drinks/activities. We would really appreciate your consideration of this request and hope to hear from you soon. Should you need any further information, please let me know.

Thank you!

Mariann Shea
PTA Vice President
Rockdale VAPA Magnet

www.rockdalevapapta.org
Support our community!
[Join](#) | [Volunteer](#) | [Donate](#)



Rap Commissioners <rap.commissioners@lacity.org>

Re: SYCAMORE GROVE PARK GRAFFITI CD1 LA COUNCIL HERNANDEZ

1 message

Rap Commissioners <rap.commissioners@lacity.org>
To: Garcia Incareal <

Fri, Aug 2, 2024 at 10:12 AM

Good morning,

Thank you for contacting the Board of Recreation and Park Commissioners Office, your email will be forwarded to the Commissioners and staff.

On Wed, Jul 31, 2024 at 1:58 PM Garcia Incareal <i > wrote:

JULY 31

LA COUNCIL Eunisses Hernandez

The Sycamore Grove Park has graffiti.

Attach picture

We have homeless encampment at Monte Vista near the South West Museum.

If this goes on fire it might cost the community at Mt. Washington .

Attach picture

Mauro Garcia





Rap Commissioners <rap.commissioners@lacity.org>

Re: Valley Plaza Tennis Courts

1 message

LA Parks Public Information <RAP.PublicInfo@lacity.org>

Thu, Aug 1, 2024 at 3:04 PM

To: Dean Dana <

>

Cc: VALLEYPLAZA.RECREATIONCENTER@lacity.org, RAP.COMMISSIONERS@lacity.org

Hello,

Thank you for contacting us. You may contact 323-644-3536 to inquire further.

Thank you,

Neyda

On Thu, Aug 1, 2024 at 3:01 PM Dean Dana <

> wrote:

Good afternoon,

As a resident of Valley Glen, I often frequent the tennis courts at Valley Plaza Park. There are a few issues I'd like to make you aware of (in case you didn't know)

1. There's a misaligned or damaged sprinkler head shooting water directly on a court (the most south western court)
2. Many courts are occupied and being used by "coaches" who bring 30 or 40 balls on the court at once and conduct teaching sessions -some classes lasting several hours. Often, these are occurring simultaneously with different coaches using two, three or all courts at a time, leaving maybe one court (sometimes NO courts) for use by the general public. I dont know if they have a permit to do this or not so I wanted to let you know.
3. While I do appreciate the removal of the dumpsters directly in front of the courts and the use of mulch to beautify the landscape around the courts, general maintenance seems to be lacking. The courts are often dirty and there's trash sometimes on the grassy areas around the courts. The signs mention court washing on Thursday mornings, but I doubt this is taking place weekly or even monthly.

Thank you for taking the time to read this.

Truly yours,
Dean

--

Department of Recreation and Parks

Public Information Office

Email: rap.publicinfo@lacity.org

Phone: 213-202-2700

Website: www.laparks.org

Follow us on social media for everything under the sun at LA Parks!





Rap Commissioners <rap.commissioners@lacity.org>

Re: Valley Plaza Tennis Courts

1 message

Rap Commissioners <rap.commissioners@lacity.org>

Fri, Aug 2, 2024 at 1:20 PM

To: Dean Dana <

>

Good afternoon,

Thank you for contacting the Board of Recreation and Park Commissioners Office, your email will be forwarded to the Commissioners and staff.

On Thu, Aug 1, 2024 at 3:01 PM Dean Dana <

> wrote:

Good afternoon,

As a resident of Valley Glen, I often frequent the tennis courts at Valley Plaza Park. There are a few issues I'd like to make you aware of (in case you didn't know)

1. There's a misaligned or damaged sprinkler head shooting water directly on a court (the most south western court)
2. Many courts are occupied and being used by "coaches" who bring 30 or 40 balls on the court at once and conduct teaching sessions -some classes lasting several hours. Often, these are occurring simultaneously with different coaches using two, three or all courts at a time, leaving maybe one court (sometimes NO courts) for use by the general public. I dont know if they have a permit to do this or not so I wanted to let you know.
3. While I do appreciate the removal of the dumpsters directly in front of the courts and the use of mulch to beautify the landscape around the courts, general maintenance seems to be lacking. The courts are often dirty and there's trash sometimes on the grassy areas around the courts. The signs mention court washing on Thursday mornings, but I doubt this is taking place weekly or even monthly.

Thank you for taking the time to read this.

Truly yours,

Dean



Rap Commissioners <rap.commissioners@lacity.org>

Re: Cooling centers for pets URGENT

1 message

Rose Watson <rose.watson@lacity.org>

Wed, Aug 7, 2024 at 1:44 PM

To: Adriana Smith <adriana.smith@lacity.org>, Deirdra Boykin <deirdra.boykin@lacity.org>, Romondo Locke <Romondo.Locke@lacity.org>

Cc: Rap Commissioners <rap.commissioners@lacity.org>, Traci Goldberg <traci.goldberg@lacity.org>, Monica Gonzalez <monica.t.gonzalez@lacity.org>, Jazmin Hurtado <jazmin.hurtado@lacity.org>, Juan Aynat <juan.aynat@lacity.org>, Gary Singer <gary.singer@lacity.org>

Yes! We will remember to do so going forward.

Wait, did we extend the cooling centers?

On Wed, Aug 7, 2024 at 12:58 PM Adriana Smith <adriana.smith@lacity.org> wrote:

Good afternoon,

When we activate augmented cooling centers, they are always pet friendly.

+Rose Watson can your team include messaging that household pets are allowed in the cooling centers?

When activated as cooling centers, LA City's [Recreation and Parks' facilities](#) are pet-friendly. Dogs must be on a leash and all pets must be accompanied by their owner at all times. Kennels will be provided upon request.

On Wed, Aug 7, 2024 at 9:17 AM Rap Commissioners <rap.commissioners@lacity.org> wrote:

Ok, thank you

On Wed, Aug 7, 2024 at 9:04 AM Traci Goldberg <traci.goldberg@lacity.org> wrote:

I'm looping in Emergency Management Division. They activate our centers and give us specifics. The attachment is very old. Looks like 2017.

Traci Goldberg
Superintendent
Valley Region Recreation

Please consider the environment before printing this email.

On Wed, Aug 7, 2024 at 8:59 AM Rap Commissioners <rap.commissioners@lacity.org> wrote:

Good Morning,

Please see the email below. Please advise.

Thank you!

----- Forwarded message -----

From: **Miriam Preissel** <

>

Date: Mon, Aug 5, 2024 at 1:39 AM

Subject: Cooling centers for pets URGENT

To: <rap.commissioners@lacity.org>

RAP Commisioners. Please investigate this and put a list of facility names, addresses and contact info that take in pets. Cooling centers in the city of Los Angeles are RAP's responsibility and I cannot find a list to share to the community to find relief. The list I have is incomplete and I am not sure if it is current based on the website. I think you would agree this should be an easy google search.



Rap Commissioners <rap.commissioners@lacity.org>

Re: Cooling centers for pets URGENT

1 message

Rap Commissioners <rap.commissioners@lacity.org>
To: Miriam Preissel <

Wed, Aug 7, 2024 at 8:47 AM

Good morning,

Thank you for contacting the Board of Recreation and Park Commissioners Office, your email will be forwarded to the Commissioners and staff.

On Mon, Aug 5, 2024 at 1:39 AM Miriam Preissel <

> wrote:

RAP Commissioners. Please investigate this and put a list of facility names, addresses and contact info that take in pets. Cooling centers in the city of Los Angeles are RAP's responsibility and I cannot find a list to share to the community to find relief. The list I have is incomplete and I am not sure if it is current based on the website. I think you would agree this should be an easy google search.

Thank you,

Miriam Preissel

Sent from my iPhone

Pet Friendly Designated Cooling Centers

Currently, pet-friendly cooling centers are only available in the city of Los Angeles.

San Fernando Valley

- Canoga Senior Citizen Center
 - 7326 Jordan Avenue
 - Canoga Park, CA 91303
 - (818) 340-2633
- Lanark Recreation Center
 - 21816 Lanark St.
 - Canoga Park, CA 91304
 - (818) 883-1503
- Lakeview Terrace Recreation Center
 - 11075 Foothill Blvd.
 - Lake View Terrace, CA 91342
 - (818) 899-8087
- North Hollywood Recreation Center
 - 11430 Chandler Blvd.
 - North Hollywood, CA 91601
 - (818) 763-7651
- Mid Valley Senior Center at Sepulveda Recreation Center
 - 8801 Kester Ave.
 - Panorama City, CA 91402
 - (818) 893-3700
- Sherman Oaks/East Valley Adult Center
 - 5060 Van Nuys Blvd.
 - Sherman Oaks, CA 91423
 - (818) 386-9674
- Sunland Park Senior Center
 - 8640 Fenwick St.
 - Sunland, CA 91040
 - (818) 353-9571
- Robert M. Wilkinson Multipurpose Center
 - 8956 Vanalden Avenue
 - Northridge, CA 91324
 - (818) 756-7741

South LA

- Algin Sutton Recreation Center
 - 8800 South Hoover St
 - Los Angeles, CA 90044
 - (323) 753-5808
- Green Meadows Recreation Center
 - 431 E. 89th Street
 - Los Angeles, CA 90083
 - (323) 565-4242
- Mount Carmel Recreation Center
 - 830 W 90th St,
 - Los Angeles, CA 90044
 - (323) 789-2756
- Rancho Cienega Sports Complex
 - 5001 Rodeo Rd
 - Los Angeles, CA 90016
 - (323) 290-2663, (323) 290-2330
- Slauson Multipurpose Center
 - 5306 Compton Ave,
 - Los Angeles, CA 90011
 - (323) 233-1174

Times of Operation

<http://emergency.lacity.org/heat>

Or dial 3-1-1

(07/25/17)





Rap Commissioners <rap.commissioners@lacity.org>

Re: Discrimination and Harassment at the Equestrian Center

1 message

Rap Commissioners <rap.commissioners@lacity.org>
To: Moran de Musée <

Thu, Aug 8, 2024 at 9:12 AM

Good morning,

Thank you for contacting the Board of Recreation and Park Commissioners Office, your email will be forwarded to the Commissioners and staff.

On Wed, Aug 7, 2024 at 1:33 PM Moran de Musée < > wrote:
Dear Commissioners,

We are two seniors and my wife is a woman of color.

We have been going to the Los Angeles Equestrian Center on Riverside Drive for about ten years, summer and winter.

On Saturday August 3, 2024, my wife and I drove into the Los Angeles Equestrian Center at 6:15 p.m. The day was 97 degrees. We sometimes take our dinner and have it while we sit in the car under the shade of a tree to cool off, as we did on Aug. 3rd. We parked in the lot closest to Riverside Dr. There were no other people or cars in the lot. Within three minutes a Caucasian woman drives up in a "golf cart" and stops perpendicular to the drivers side of our car. She was about five feet from us. She had two dogs with her. A large Setter and a smaller dog. She proceeded to walk Dog 1 to the grass right in front of us and the dog defecated. She walked the dog back to the cart and brought Dog 2 to the same spot and that dog also defecated in front of us, then she walked the dog back to the cart. There, for about 10 minutes, She sat. She then proceeded to text on her phone. Two minutes later a security guard showed up out of nowhere and started having a friendly chat with the woman. Around 6:30 the woman pointed at us then the security guard walked to my window and told me we had to leave. Perplexed, I decided to pack up our dinner and left the park. Please note: At all times we remained in our car.

All of this time there were cars coming and going to the stables and other parking lots deeper into the EC.

I drove straight to the Griffith Park Ranger Station to inquire about why we were asked to leave. The Ranger informed me that the EC is part of Griffith Park and is open until 10 pm.

I returned to the EC to speak to the Security guard and was shocked and surprised to see the woman in the golf cart still there driving around the EC in her golf cart with the dogs. She followed our car as I looked for the guard.

As we sat in the car, the guard threaten to call the police. He told us to remove our masks so he could photograph us. He photographed our license plate. All the time the woman sat in her golf cart. He did not tell the woman to leave.

Why did She point the finger at us?
Why were we asked to leave?
Why was she not asked to leave?

We were singled out.
We were discriminated against.
We were bullied.
We were harassed.
We were intimidated.

Thank you for your attention to this matter. I look forward to hearing from you.
Sincerely,
Moran de Musée



Rap Commissioners <rap.commissioners@lacity.org>

Re: Response to letter dated May 15, 2024 re: Art Policy

1 message

Rap Commissioners <rap.commissioners@lacity.org>

Fri, Aug 9, 2024 at 11:47 AM

To: Jennifer Clark <

>

Good morning,

Thank you for contacting the Board of Recreation and Park Commissioners Office, your email will be forwarded to the Commissioners and staff

On Thu, Aug 8, 2024 at 7:20 PM Jennifer Clark <

> wrote:

RAP Commissioners,

Thank you again for Meghan Luera's presentation and discussion at our North Hollywood Northeast Neighborhood Council Board meeting in July 2024.

Attached is our official letter of response and statement for the RAP Board of Commissioners.

Yours,

Jennifer Clark
North Hollywood North East Neighborhood Council
Vice President
Chair of Bylaws & Rules Committee
Chair of Beautification & Public Safety Committee
Chair of Elections Committee / Vice Chair of the Executive Committee
Resident Representatives Stakeholder Board Member

If this is after-hours for you, please feel free to wait to respond until your preferred working hours resume. I work flexibly and may send emails outside normal working hours. Your immediate response is not expected.

Please note: any email correspondence with me is subject to the California Public Records Act, and the record may be subject to public disclosure.

On Wed, Jul 10, 2024 at 3:19 PM Meghan Luera <meghan.luera@lacity.org> wrote:

Hello,

See attached RAP's response to your letter dated May 15, 2024 regarding the proposed art policy.

Meghan Luera

Senior Management Analyst II
Department of Recreation and Parks
Planning, Maintenance and Construction
221 North Figueroa St., Suite 400
Los Angeles, CA 90012



North Hollywood Northeast Neighborhood Council

July 17, 2024

To the Board of Recreation and Parks Board of Commissioners,

Thank you again for directing your staff to follow up with our Board regarding our concerns on the drafted art policy in advance of the final vote. Meghan Luera promptly reached out to schedule a presentation/discussion at our soonest North Hollywood Northeast Board Meeting.

We also received a response letter dated June 27, 2024 and sent via email on July 10, 2024 from Jimmy Kim, General Manager, and Cathie Santo Domingo, Assistant General Manager. Our below response will reference both Meghan Luera's presentation and the information included in that June 27, 2024 letter.

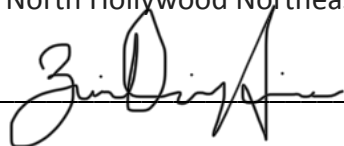
The North Hollywood Northeast Neighborhood Council has the following suggested changes and clarifications that were discussed with Meghan Luera during their presentation at our July 17, 2024 meeting:

1. That the "*diligent cost analysis factoring in the time internally processing the applications, ...*" be publicly available and included when presenting the proposed policy to the RAP Board of Commissioners;
2. That the "*Right-of-Entry permit for installation*" includes clarification in the policy that it is referring to the removal cost at the end of the art installation;
3. That language is included in the policy to inform the applicant of the estimated time it will take RAP staff to process the application for transparency.

Thank you for your consideration.

Sincerely,

The North Hollywood Northeast Neighborhood Council

X  _____

Zaid Diaz-Arias

President

North Hollywood Northeast Neighborhood Council



North Hollywood Northeast Neighborhood Council

Official Use Only

Date of Board Vote: July 17, 2024

Board Vote Count: Aye: 7 Nay: 0 Abstain: 1

Motion Status: Passed X Failed _____ Other _____