



Aerial Photo of Current Condition (2002)



The Vision



# POTRERO CANYON PARK



**Community Update  
&  
Project Overview**  
July 28, 2003



# Jurisdictional Agencies

- **California Coastal Commission**
- **US Fish and Wildlife Service**
- **California Department of Fish and Game**
- **Caltrans**
- **Los Angeles City Fire Department**



# POTRERO CANYON PARK

## Major Milestones



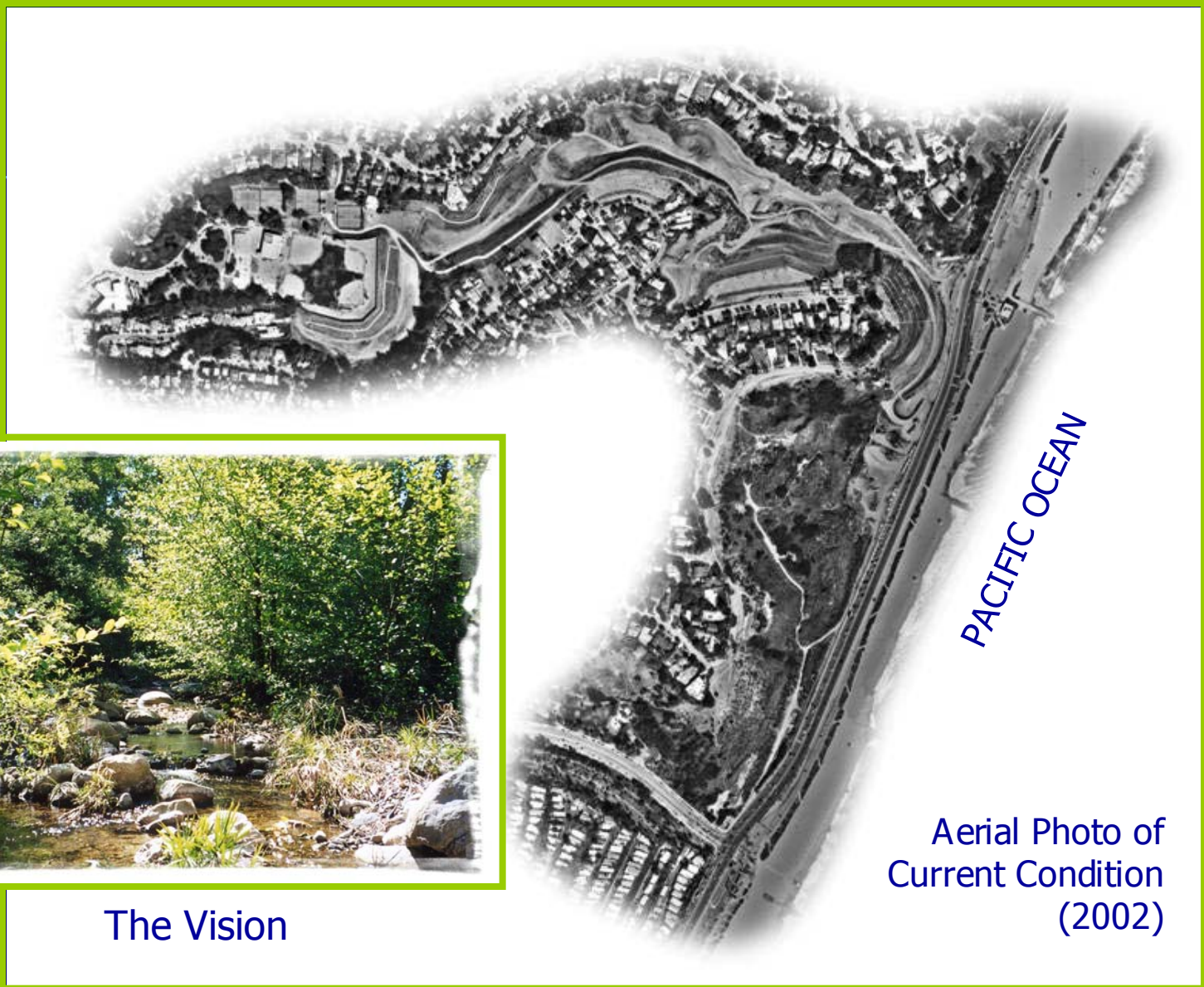
1988-COMPLETION OF PHASE I-FINISH OF STORM DRAIN

1989-BEGINNING OF PHASE II-FILLING OF CANYON

2003-AWAITING COASTAL COMMISSION APPROVAL OF SLIDE REPAIRS-HEARING IS AUGUST 7, 2003

2004-COMPLETION OF PHASE II-GOAL

TBD – COMPLETION OF THE PARK



Aerial Photo of  
Current Condition  
(2002)



The Vision



# POTRERO CANYON PARK COASTAL COMMISSION

## COASTAL COMMISSION PERMIT REQUIREMENTS

1<sup>ST</sup> PHASE: INSTALLATION OF SUBDRAIN SYSTEM,  
STORM DRAIN AND 25 FEET OF FILL- *100% COMPLETE*

2<sup>ND</sup> PHASE: 75 ADDITIONAL FEET OF FILL AND  
ADDITIONAL BUTTRESS FILLS ALONG CANYON SIDES-  
*95% COMPLETE*

3<sup>RD</sup> PHASE: CONSTRUCTION OF PARK AND RESTORED  
RIPARIAN HABITAT AREA



# POTRERO CANYON PARK COASTAL COMMISSION



## COASTAL COMMISSION APPROVED AMENDMENTS

- DETERMINE THE FINAL CANYON FLOOR HEIGHT
- CHANGE WIDTH OF FIRE ROAD TO 12 FEET
- INCREASE RIPARIAN AREA FROM 7.4 ACRES TO 7.9 ACRES
- REDESIGN CONFIGURATION OF BUTTRESS FILLS
- EXTEND DEADLINE FOR FINAL ENGINEERING PLANS
- INSTALL SURFACE WATER DIVERSION SYSTEM
- LANDSLIDE REPAIRS



# POTRERO CANYON PARK COASTAL COMMISSION

COASTAL COMMISSION AMENDMENTS  
PENDING APPROVAL AT AUGUST 7<sup>th</sup> HEARING  
IN HUNINGTON BEACH

- REPAIR TWO LANDSLIDES:
  - BETWEEN ALMA REAL DR. AND FRIENDS ST.
  - 15202 EARLHAM STREET



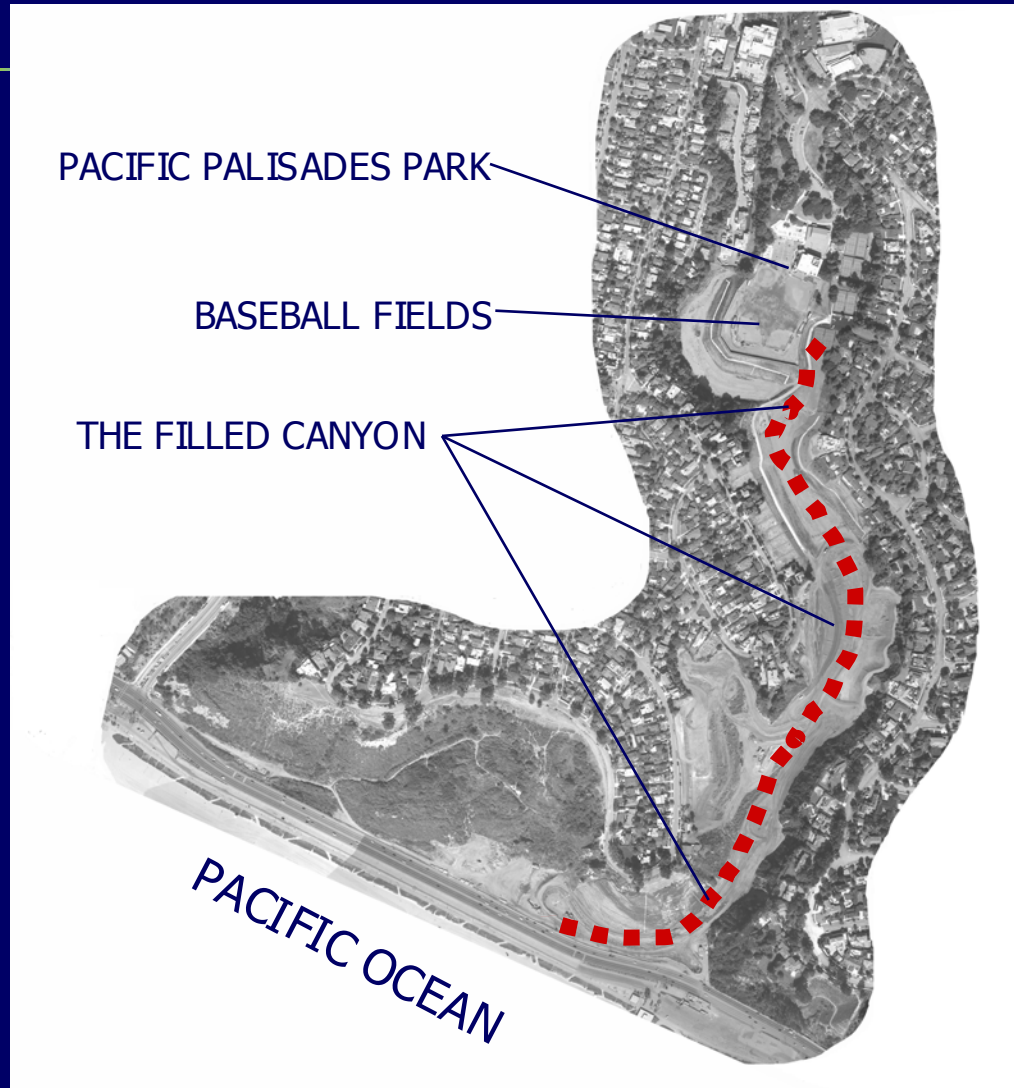
# POTRERO CANYON PARK COASTAL COMMISSION

## COASTAL COMMISSION AMENDMENTS TO BE SUBMITTED

- REMOVE CONDITION THAT PHASE III MUST BE COMPLETED BEFORE ANY LOTS CAN BE SOLD *(ONLY AVAILABLE FUNDING SOURCE TO COMPLETE PHASE II and PHASE III)*
- REMOVE RE-CIRCULATING STREAM FROM THE PLAN. *(DEPEND ON SEASONAL WATER AND IRRIGATION TO MAINTAIN RIPARIAN HABITAT)*



# POTRERO CANYON PARK



**1989-2003  
FILLING OF  
CANYON**

**COST TO COMPLETE  
PHASE II:  
\$1,172,660**



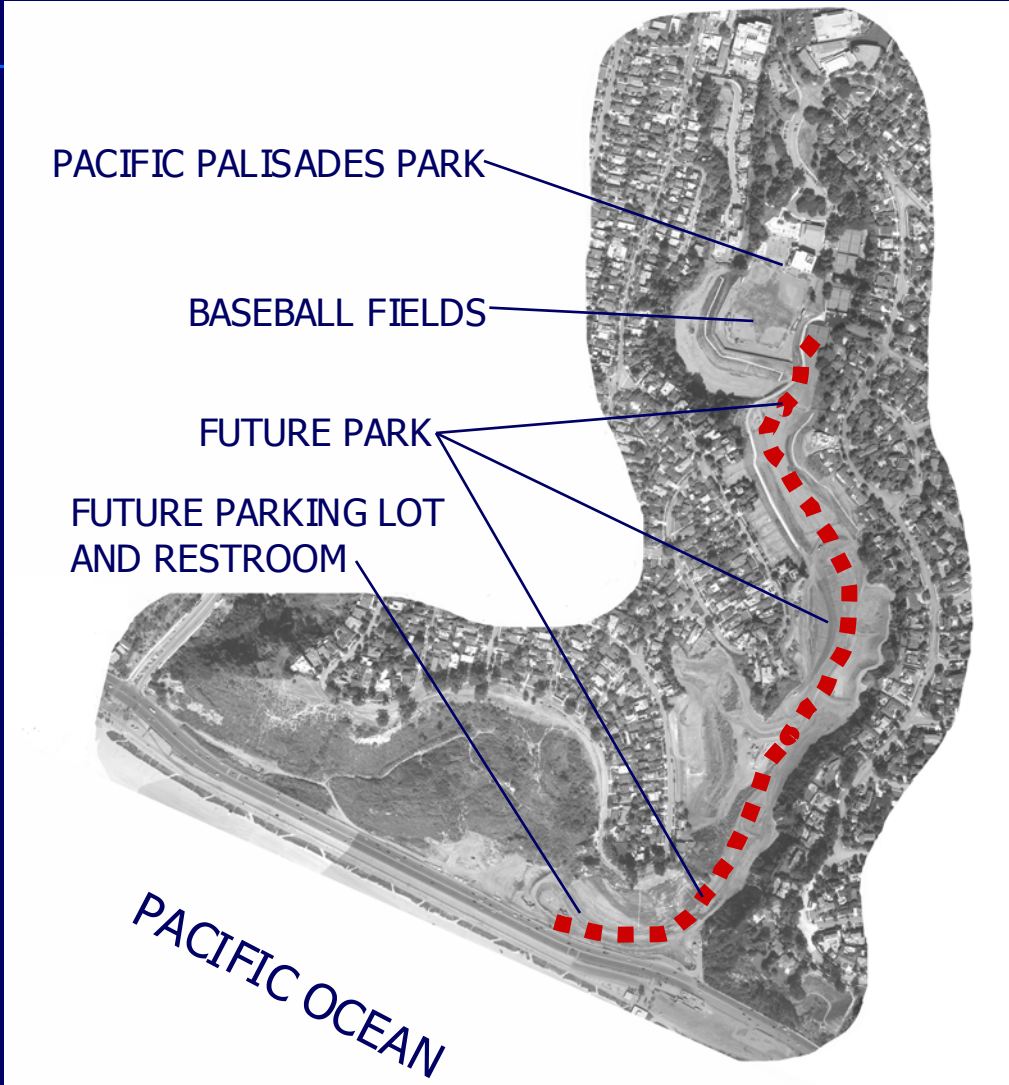
# Park Development Goals



- Phase III of Potrero Canyon Park Has two primary goals:
  1. Habitat Replacement and Creation
  2. Recreational Opportunity Enhancement



# POTRERO CANYON PARK PARK BUILD OUT



**COST TO COMPLETE  
PHASE III:**

**TO BE DETERMINED  
PENDING COASTAL  
COMMISSION  
RESOLUTION**



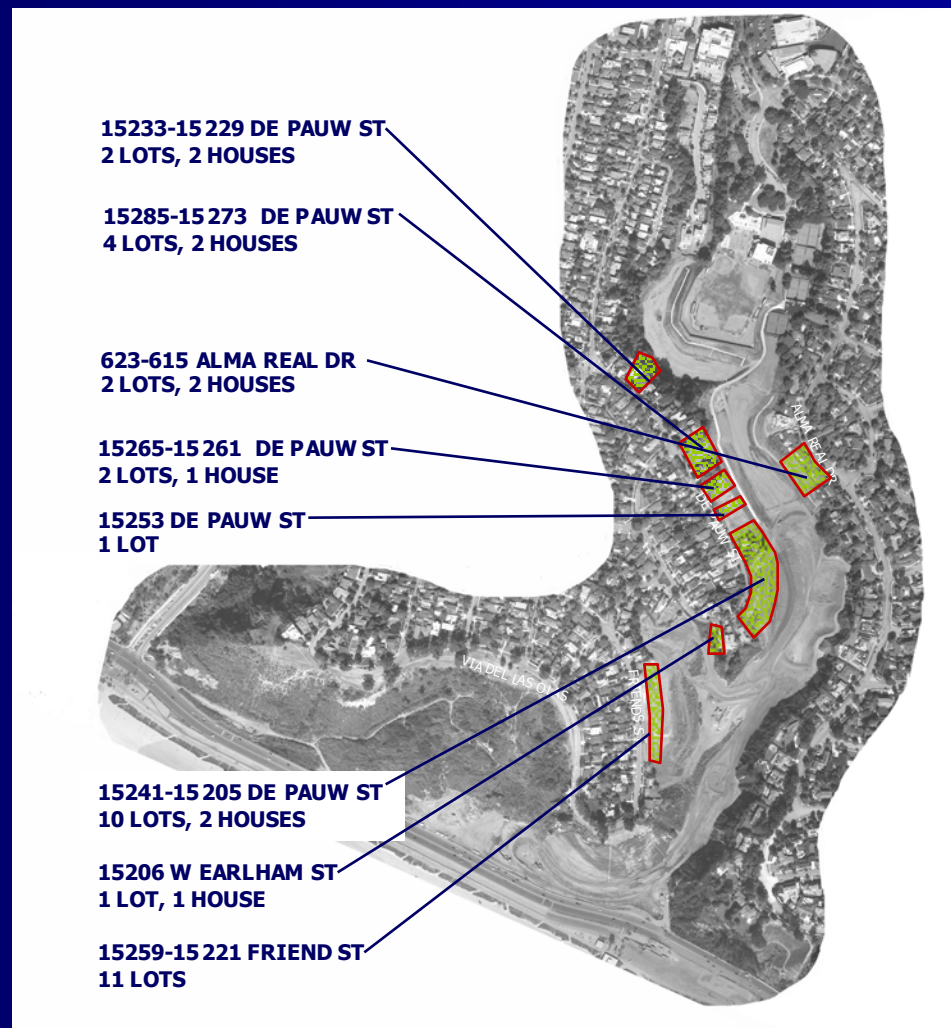
# Coastal Commission Mandated Park Elements

- Multi-Use Trail connecting Palisade Recreation Center with the beach that will also serve as Fire and Maintenance Vehicle Access
- Interpretive Exhibit and Rest Areas
- Parking Lot and Restroom at Mouth of Canyon

# POTRERO CANYON PARK

## Revenue Sources for Park Construction

### 33 CITY-OWNED LOTS





# Goal – Habitat Replacement & Creation

- As mitigation for the loss of habitat resulting from the canyon slope stabilization efforts undertaken by the City of Los Angeles, the California Coastal Commission conditioned the City to replace this lost habitat on Recreation and Parks Department property within Potrero Canyon. Specifically, the conditions require the replacement of:
  - 7.9 acres of Riparian Habitat
  - 22 acres of Coastal Sage Scrub Habitat

# Planting Zones





# What is Coastal Sage Scrub Habitat?

- Native plant community that occupies a narrow strip along the coast stretching from approximately Santa Barbara south into Baja California. This plant community's name comes from the predominant presence of Sage plants as well as other 'scrubby' shrubs.
- Coastal Sage Scrub habitat is characterized by such plants as...



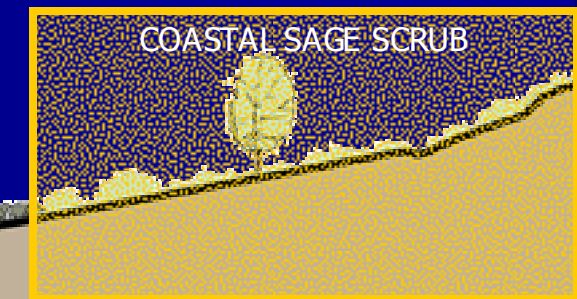
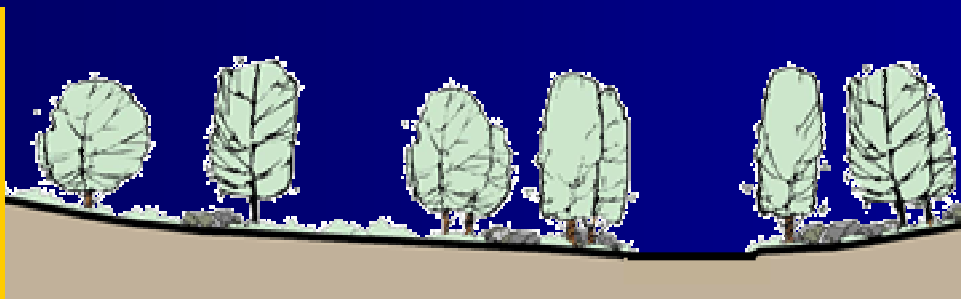
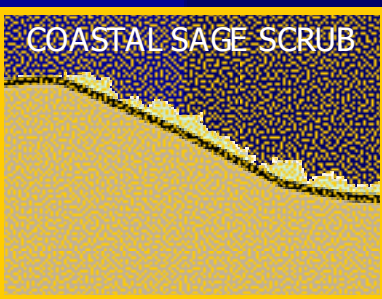
California Sagebrush



Monkey-Flower

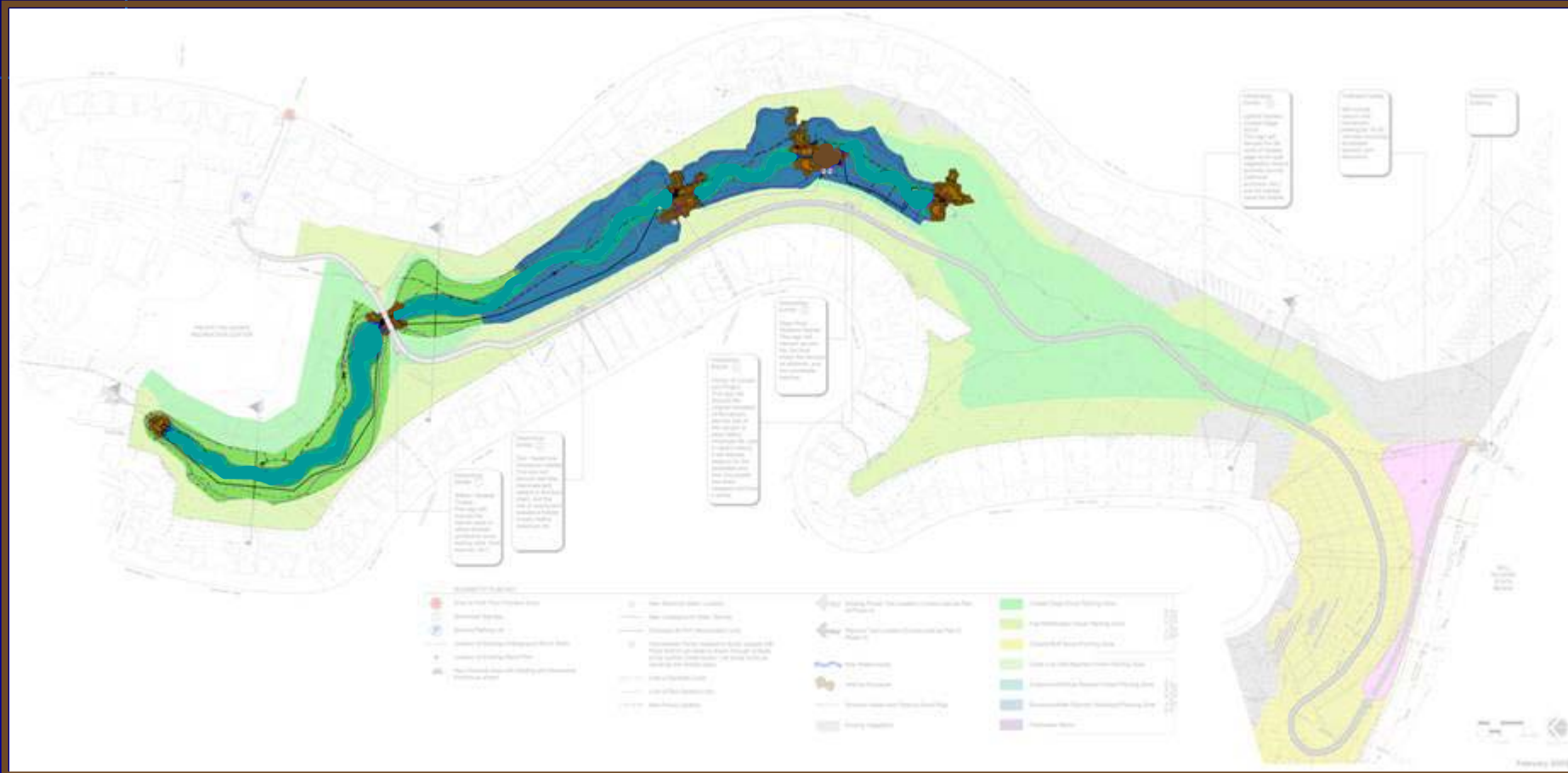


Purple Sage





# Riparian Zone



**7.9 Acres**

# What is Riparian Habitat?

- Native plant community of semi-aquatic trees, shrubs and herbs found along the margins of permanent and seasonal streams. This plant community can be found within the geographical limits of many plant communities, including Coastal Sage Scrub, where it typically occupies canyon and drainage bottoms.
- Riparian habitat is characterized by such plants as...



Red Willow

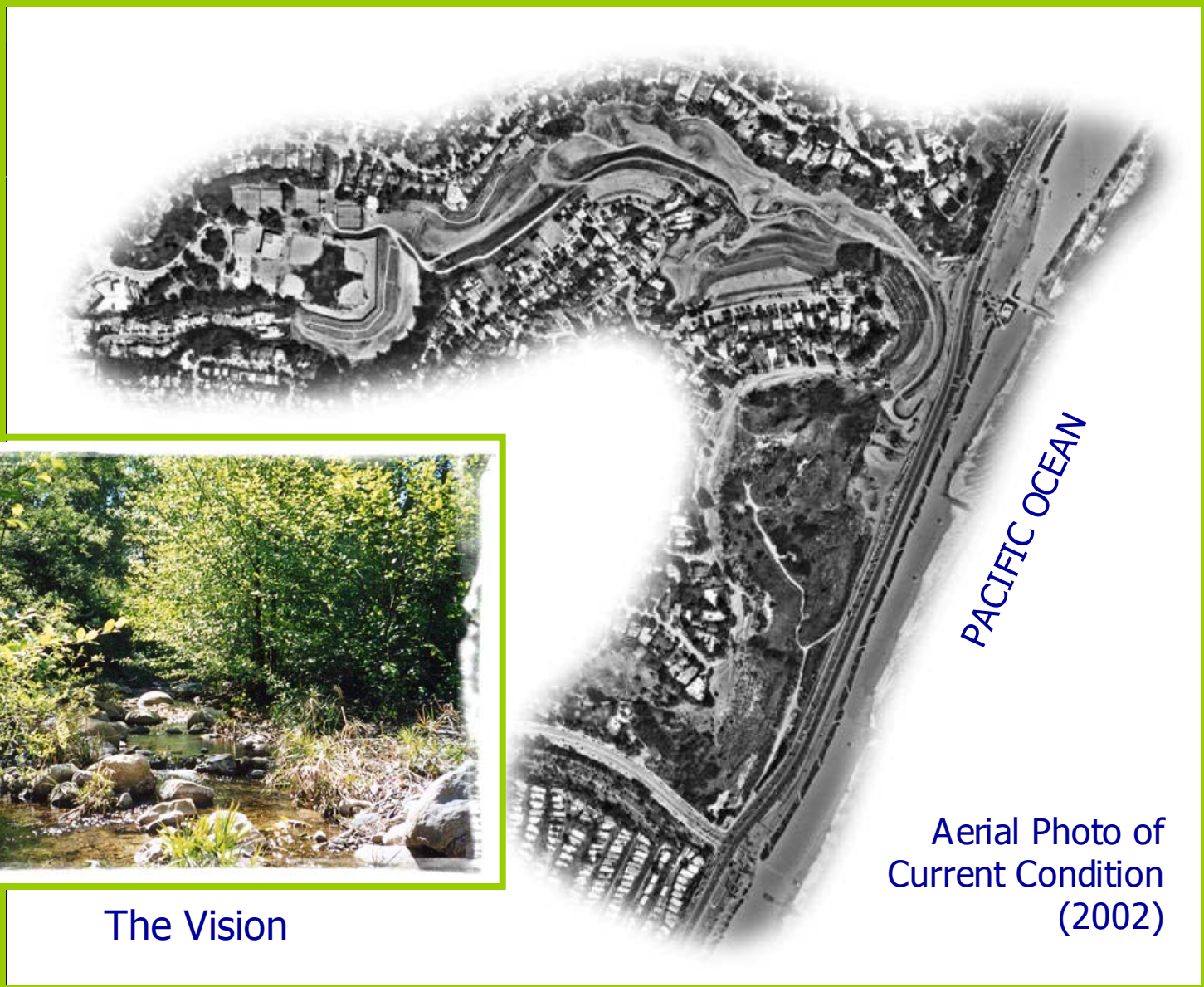


Western Sycamore



Coast Live Oak





Aerial Photo of  
Current Condition  
(2002)



The Vision



# Project Framework

- Potrero Canyon Park Phase III is governed by the conditions of approval issued by the California Coastal Commission as part of the Los Angeles City Coastal Development Permit No.'s:
  - 5-86-958
  - 5-86-958A
  - 5-91-286
  - 5-91-286A
  - 5-91-286A2
  - 5-91-286A3



# POTRERO CANYON PARK COASTAL COMMISSION

## COASTAL COMMISSION AMENDMENTS TO BE RESOLVED

- CONDITION OF CONSTRUCTING A PARKING LOT AND RESTROOM AT BOTTOM OF CANYON OFF PACIFIC COAST HIGHWAY



# Goal – Recreational Opportunity Enhancement

- **By way of coastal access and recreation enhancements for Phase III of Potrero Canyon Park, the California Coastal Commission conditioned the City of Los Angeles, Recreation and Parks Department to provide for the following public recreational opportunities:**
  - Multi-Use Trail connecting Palisade Recreation Center with the beach that will also serve as Fire and Maintenance Vehicle Access
  - Interpretive Exhibit and Rest Areas
  - Parking Lot and Restroom at Mouth of Canyon