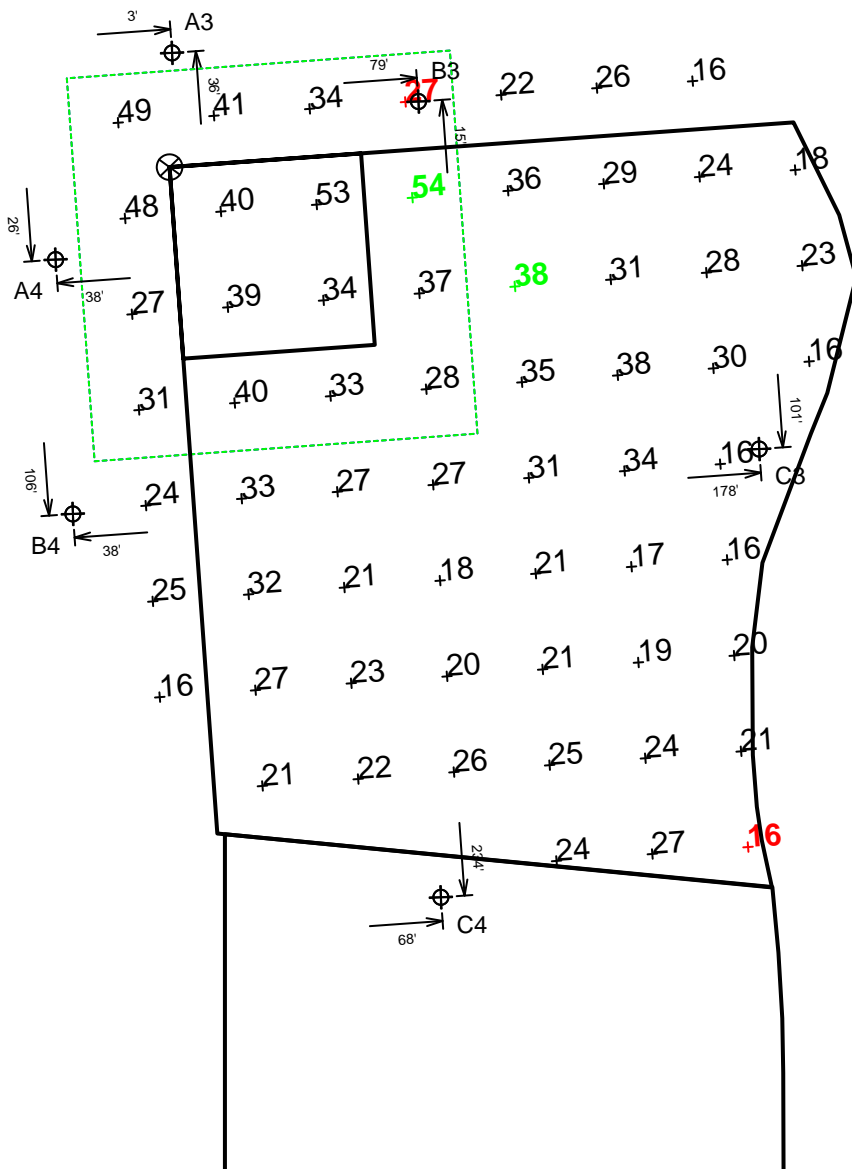


Appendix D. Illumination Plans

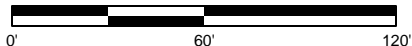
EQUIPMENT LIST FOR AREAS SHOWN

| Pole | | | Luminaires | | | | | |
|------|---------------|------|-----------------|-----------------|-----------|------------|-----------|-------------|
| QTY | LOCATION | SIZE | GRADE ELEVATION | MOUNTING HEIGHT | LAMP TYPE | QTY / POLE | THIS GRID | OTHER GRIDS |
| 2 | A3-A4 | 60' | - | 60' | 1500W MZ | 2 | 2 | 0 |
| 2 | B3-B4 | 60' | - | 60' | 1500W MZ | 3 | 3 | 0 |
| 1 | C3 | 60' | - | 60' | 1500W MZ | 4 | 4 | 0 |
| 1 | C4 | 60' | - | 60' | 1500W MZ | 3/3* | 3 | 3 |
| 6 | TOTALS | | | | | 20 | 17 | 3 |

* This structure utilizes a back-to-back mounting configuration



SCALE IN FEET 1 : 60



Pole location(s) ⊕ dimensions are relative to 0,0 reference point(s) ⊗



GUARANTEED PERFORMANCE

ILLUMINATION SUMMARY

Baseball-Softball1
Bellevue Rec.

BB/SB-A
· Size: Irregular
· Grid Spacing = 30.0' x 30.0'
· Values given at 3.0' above grade

· Luminaire Type: Green Generation
· Rated Lamp Life: 5000 hours
· Avg Lumens/Lamp: 134,000

CONSTANT ILLUMINATION
HORIZONTAL FOOTCANDLES

| | Infield | Outfield |
|-----------------------|---------|----------|
| No. of Target Points: | 16 | 45 |
| Average: | 38.39 | 24.54 |
| Maximum: | 54 | 38 |
| Minimum: | 27 | 16 |
| Avg/Min: | 1.43 | 1.57 |
| Max/Min: | 2.00 | 2.40 |
| UG (Adjacent Pts): | 2.13 | 2.13 |
| CV: | 0 | 0 |

| | |
|--------------------------------|-------|
| Average Lamp Tilt Factor: | 1.000 |
| Number of Luminaires: | 17 |
| Avg KW over 5000 hours: | 26.52 |
| Max KW for Sizing Transformer: | 28.9 |

Guaranteed Performance: The CONSTANT ILLUMINATION described above is guaranteed for the rated life of the lamp.

Field Measurements: Averages shall be +/-10% in accordance with IESNA RP-6-01 and CIBSE LG4. Individual measurements may vary from computer predictions.

Electrical System Requirements: Refer to Amperage Draw Chart and/or the "Musco Control System Summary" for electrical sizing.

Installation Requirements: Results assume +/- 3% nominal voltage at line side of the ballast and structures located within 3 feet (1m) of design locations.

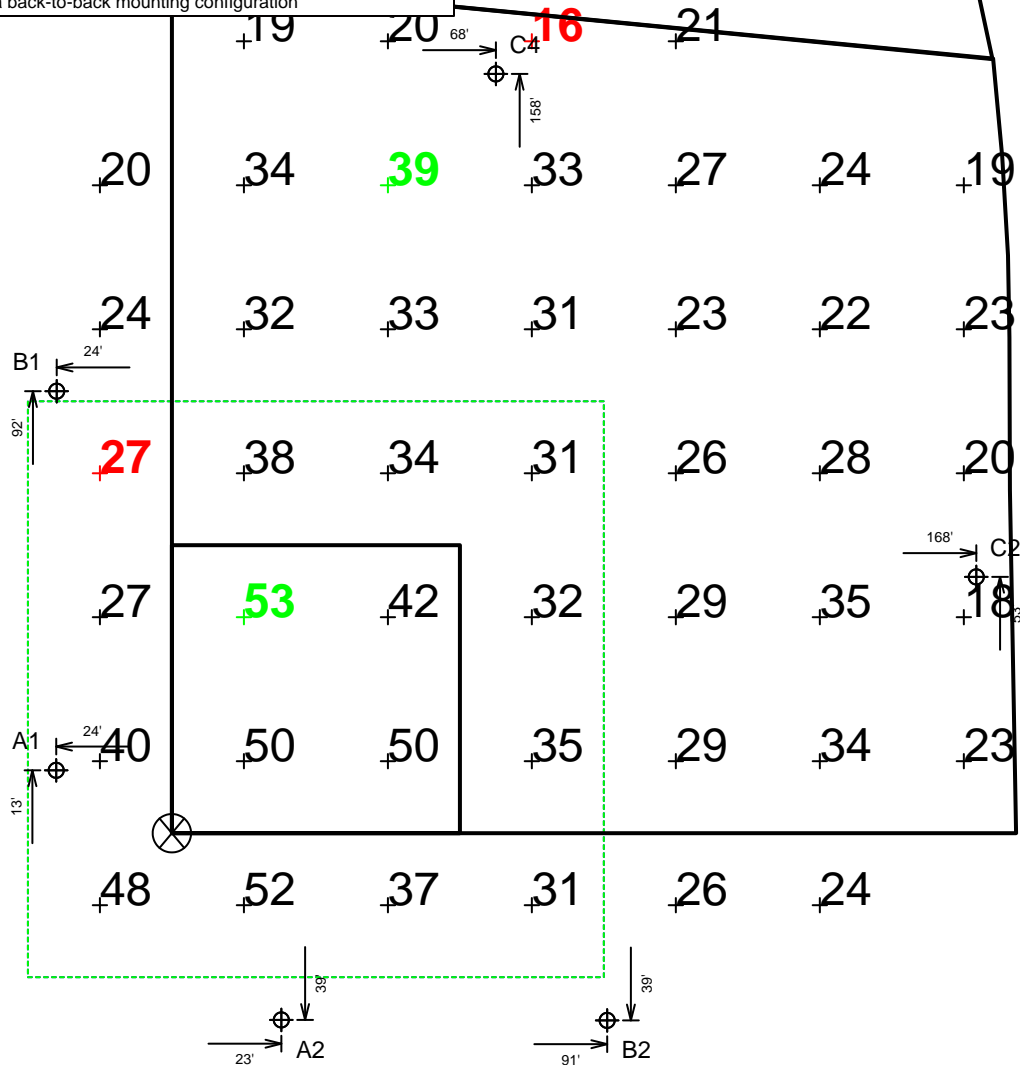
By: Micha Hudack
File #: 107085LSGR

Date: 13-Mar-06

Not to be reproduced in whole or part without the written consent of Musco Lighting. ©1981, 2006 Musco Lighting

| EQUIPMENT LIST FOR AREAS SHOWN | | | | | | | | |
|--------------------------------|----------------|------|-----------------|-----------------|-----------|------------|-----------|-------------|
| Pole | | | | Luminaires | | | | |
| QTY | LOCATION | SIZE | GRADE ELEVATION | MOUNTING HEIGHT | LAMP TYPE | QTY / POLE | THIS GRID | OTHER GRIDS |
| 4 | A1-A2 B1-B2 | 60' | - | 60' | 1500W MZ | 2 | 2 | 0 |
| 1 | C2 | 60' | - | 60' | 1500W MZ | 3 | 3 | 0 |
| 1 | C4 | 60' | - | 60' | 1500W MZ | 3/3* | 3 | 3 |
| 6 | TOTALS | | | | | 17 | 14 | 3 |

* This structure utilizes a back-to-back mounting configuration



SCALE IN FEET 1 : 40



Pole location(s) ⊕ dimensions are relative to 0,0 reference point(s) ⊗



GUARANTEED PERFORMANCE

ILLUMINATION SUMMARY

Baseball-Softball2
Bellevue Rec.

- BB/SB-B
- Size: Irregular
- Grid Spacing = 30.0' x 30.0'
- Values given at 3.0' above grade

- Luminaire Type: Green Generation
- Rated Lamp Life: 5000 hours
- Avg Lumens/Lamp: 134,000

CONSTANT ILLUMINATION HORIZONTAL FOOTCANDLES

| | Infield | Outfield |
|-----------------------|---------|----------|
| No. of Target Points: | 16 | 29 |
| Average: | 39.14 | 25.95 |
| Maximum: | 53 | 39 |
| Minimum: | 27 | 16 |
| Avg/Min: | 1.45 | 1.59 |
| Max/Min: | 1.95 | 2.38 |
| UG (Adjacent Pts): | 2.03 | 2.03 |
| CV: | 0 | 0 |

| | |
|--------------------------------|-------|
| Average Lamp Tilt Factor: | 1.000 |
| Number of Luminaires: | 14 |
| Avg KW over 5000 hours: | 21.84 |
| Max KW for Sizing Transformer: | 23.8 |

Guaranteed Performance: The CONSTANT ILLUMINATION described above is guaranteed for the rated life of the lamp.

Field Measurements: Averages shall be +/- 10% in accordance with IESNA RP-6-01 and CIBSE LG4. Individual measurements may vary from computer predictions.

Electrical System Requirements: Refer to Amperage Draw Chart and/or the "Musco Control System Summary" for electrical sizing.

Installation Requirements: Results assume +/- 3% nominal voltage at line side of the ballast and structures located within 3 feet (1m) of design locations.

By: Micha Hudack
File #: 107085LSGR

Date: 13-Mar-06

Not to be reproduced in whole or part without the written consent of Musco Lighting. ©1981, 2006 Musco Lighting

| EQUIPMENT LIST FOR AREAS SHOWN | | | | | | | | | |
|--------------------------------|----------------|------|-----------------|-----------------|-----------|------------|-----------|-------------|---|
| Pole | | | | Luminaires | | | | | |
| QTY | LOCATION | SIZE | GRADE ELEVATION | MOUNTING HEIGHT | LAMP TYPE | QTY / POLE | THIS GRID | OTHER GRIDS | |
| 6 | A1-A4 B1-B2 | 60' | - | 60' | 1500W MZ | 2 | 2 | 0 | |
| 3 | B3-B4 C2 | 60' | - | 60' | 1500W MZ | 3 | 3 | 0 | |
| 1 | C3 | 60' | - | 60' | 1500W MZ | 4 | 4 | 0 | |
| 1 | C4 | 60' | - | 60' | 1500W MZ | 3/3* | 6 | 0 | |
| 11 | TOTALS | | | | | | 31 | 31 | 0 |

* This structure utilizes a back-to-back mounting configuration



GUARANTEED PERFORMANCE

ILLUMINATION SUMMARY

Spill - East
Bellevue Rec.

- Spill - East
- Grid Spacing = 30.0'
- Values given at 53.0' above grade
- Luminaire Type: Green Generation
- Rated Lamp Life: 5000 hours
- Avg Lumens/Lamp: 134,000

CONSTANT ILLUMINATION HORIZONTAL FOOTCANDLES

| | Statistical Area |
|-----------------------|------------------|
| No. of Target Points: | 15 |
| Average: | 0.0007 |
| Maximum: | 0.00 |
| Minimum: | 0.00 |

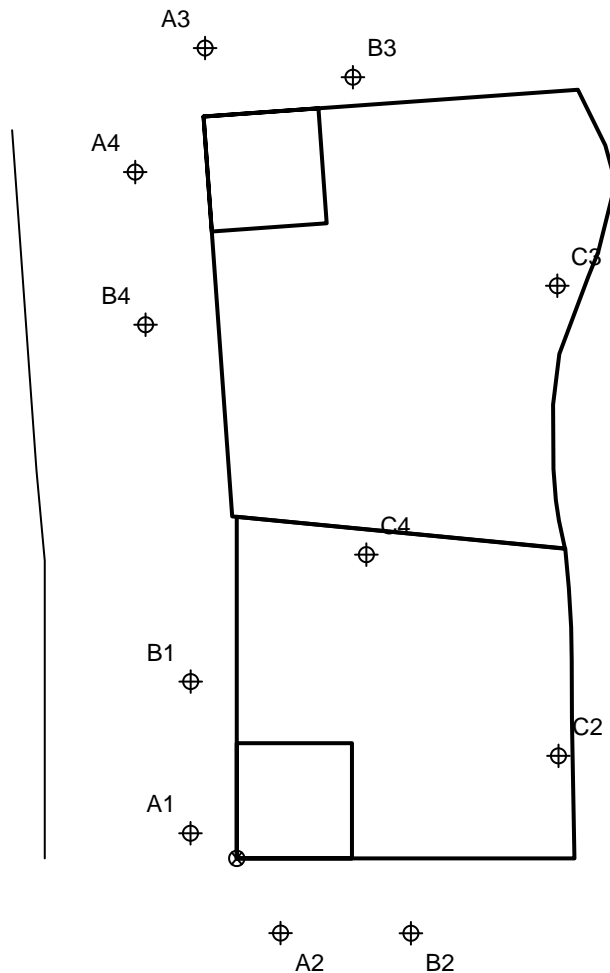
| | |
|--------------------------------|-------|
| Average Lamp Tilt Factor: | 1.000 |
| Number of Luminaires: | 31 |
| Avg KW over 5000 hours: | 48.36 |
| Max KW for Sizing Transformer: | 52.7 |

Guaranteed Performance: The CONSTANT ILLUMINATION described above is guaranteed for the rated life of the lamp.

Field Measurements: Averages shall be +/-10% in accordance with IESNA RP-6-01 and CIBSE LG4. Individual measurements may vary from computer predictions.

Electrical System Requirements: Refer to Amperage Draw Chart and/or the "Musco Control System Summary" for electrical sizing.

Installation Requirements: Results assume +/- 3% nominal voltage at line side of the ballast and structures located within 3 feet (1m) of design locations.



SCALE IN FEET 1 : 100



Pole location(s) ⊕ dimensions are relative to 0,0 reference point(s) ⊗

By: Micha Hudack
File #: 107085LSGR

Date: 13-Mar-06

Not to be reproduced in whole or part without the written consent of Musco Lighting. ©1981, 2006 Musco Lighting

EQUIPMENT LIST FOR AREAS SHOWN

| Pole | | | | Luminaires | | | | |
|------|----------------|------|-----------------|-----------------|-----------|------------|-----------|-------------|
| QTY | LOCATION | SIZE | GRADE ELEVATION | MOUNTING HEIGHT | LAMP TYPE | QTY / POLE | THIS GRID | OTHER GRIDS |
| 6 | A1-A4 B1-B2 | 60' | - | 60' | 1500W MZ | 2 | 2 | 0 |
| 3 | B3-B4 C2 | 60' | - | 60' | 1500W MZ | 3 | 3 | 0 |
| 1 | C3 | 60' | - | 60' | 1500W MZ | 4 | 4 | 0 |
| 1 | C4 | 60' | - | 60' | 1500W MZ | 3/3* | 6 | 0 |
| 11 | TOTALS | | | | | 31 | 31 | 0 |

* This structure utilizes a back-to-back mounting configuration



GUARANTEED PERFORMANCE

ILLUMINATION SUMMARY

Spill - East
Bellevue Rec.

Spill - East
- Grid Spacing = 30.0'
- Values given at 53.0' above grade

- Luminaire Type: Green Generation
- Rated Lamp Life: 5000 hours
- Avg Lumens/Lamp: 134,000

CONSTANT ILLUMINATION
MAX VERTICAL FOOTCANDLES

| | |
|-----------------------|------------------|
| | Statistical Area |
| No. of Target Points: | 15 |
| Average: | 0.0385 |
| Maximum: | 0.07 |
| Minimum: | 0.01 |

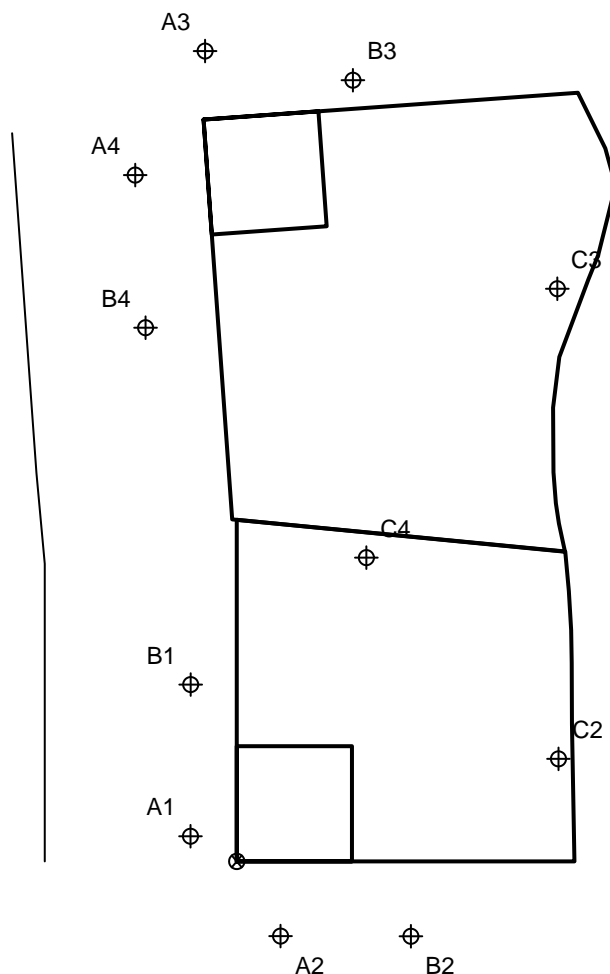
| | |
|--------------------------------|-------|
| Average Lamp Tilt Factor: | 1.000 |
| Number of Luminaires: | 31 |
| Avg KW over 5000 hours: | 48.36 |
| Max KW for Sizing Transformer: | 52.7 |

Guaranteed Performance: The CONSTANT ILLUMINATION described above is guaranteed for the rated life of the lamp.

Field Measurements: Averages shall be +/-10% in accordance with IESNA RP-6-01 and CIBSE LG4. Individual measurements may vary from computer predictions.

Electrical System Requirements: Refer to Amperage Draw Chart and/or the "Musco Control System Summary" for electrical sizing.

Installation Requirements: Results assume +/- 3% nominal voltage at line side of the ballast and structures located within 3 feet (1m) of design locations.



SCALE IN FEET 1 : 100



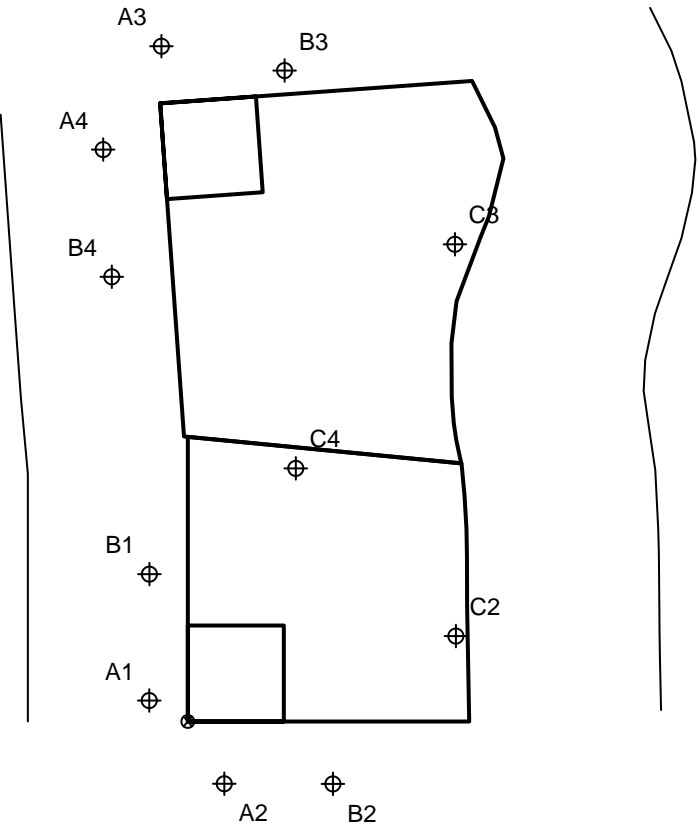
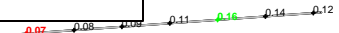
Pole location(s) ⊕ dimensions are relative to 0,0 reference point(s) ⊗

By: Micha Hudack Date: 13-Mar-06
File #: 107085LSGr

Not to be reproduced in whole or part without the written consent of Musco Lighting. ©1981, 2006 Musco Lighting

| EQUIPMENT LIST FOR AREAS SHOWN | | | | | | | | | |
|--------------------------------|----------------|------|-----------------|-----------------|-----------|------------|-----------|-------------|---|
| Pole | | | | Luminaires | | | | | |
| QTY | LOCATION | SIZE | GRADE ELEVATION | MOUNTING HEIGHT | LAMP TYPE | QTY / POLE | THIS GRID | OTHER GRIDS | |
| 6 | A1-A4 B1-B2 | 60' | - | 60' | 1500W MZ | 2 | 2 | 0 | |
| 3 | B3-B4 C2 | 60' | - | 60' | 1500W MZ | 3 | 3 | 0 | |
| 1 | C3 | 60' | - | 60' | 1500W MZ | 4 | 4 | 0 | |
| 1 | C4 | 60' | - | 60' | 1500W MZ | 3/3* | 6 | 0 | |
| 11 | TOTALS | | | | | | 31 | 31 | 0 |

* This structure utilizes a back-to-back mounting configuration



GUARANTEED PERFORMANCE

ILLUMINATION SUMMARY

Spill - North
Bellevue Rec.

Spill - North
- Grid Spacing = 30.0'
- Values given at 3.0' above grade

- Luminaire Type: Green Generation
- Rated Lamp Life: 5000 hours
- Avg Lumens/Lamp: 134,000

| CONSTANT ILLUMINATION HORIZONTAL FOOTCANDLES | |
|-------------------------------------------------|------------------|
| | Statistical Area |
| No. of Target Points: | 7 |
| Average: | 0.1093 |
| Maximum: | 0.16 |
| Minimum: | 0.07 |
| Average Lamp Tilt Factor: | 1.000 |
| Number of Luminaires: | 31 |
| Avg KW over 5000 hours: | 48.36 |
| Max KW for Sizing Transformer: | 52.7 |

Guaranteed Performance: The CONSTANT ILLUMINATION described above is guaranteed for the rated life of the lamp.

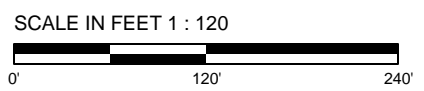
Field Measurements: Averages shall be +/-10% in accordance with IESNA RP-6-01 and CIBSE LG4. Individual measurements may vary from computer predictions.

Electrical System Requirements: Refer to Amperage Draw Chart and/or the "Musco Control System Summary" for electrical sizing.

Installation Requirements: Results assume +/- 3% nominal voltage at line side of the ballast and structures located within 3 feet (1m) of design locations.

By: Micha Hudack Date: 13-Mar-06
File #: 107085LSGR

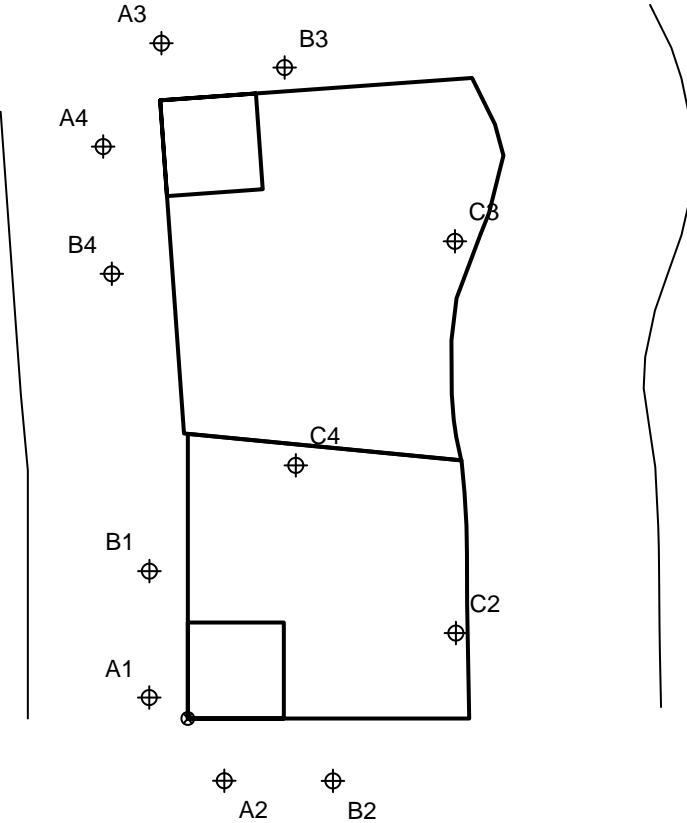
Not to be reproduced in whole or part without the written consent of Musco Lighting. ©1981, 2006 Musco Lighting



Pole location(s) ⊕ dimensions are relative to 0,0 reference point(s) ⊗

| EQUIPMENT LIST FOR AREAS SHOWN | | | | | | | | | |
|--------------------------------|----------------|------|-----------------|-----------------|-----------|------------|-----------|-------------|---|
| Pole | | | | Luminaires | | | | | |
| QTY | LOCATION | SIZE | GRADE ELEVATION | MOUNTING HEIGHT | LAMP TYPE | QTY / POLE | THIS GRID | OTHER GRIDS | |
| 6 | A1-A4 B1-B2 | 60' | - | 60' | 1500W MZ | 2 | 2 | 0 | |
| 3 | B3-B4 C2 | 60' | - | 60' | 1500W MZ | 3 | 3 | 0 | |
| 1 | C3 | 60' | - | 60' | 1500W MZ | 4 | 4 | 0 | |
| 1 | C4 | 60' | - | 60' | 1500W MZ | 3/3* | 6 | 0 | |
| 11 | TOTALS | | | | | | 31 | 31 | 0 |

* This structure utilizes a back-to-back mounting configuration



GUARANTEED PERFORMANCE

ILLUMINATION SUMMARY

Spill - North
Bellevue Rec.

Spill - North
- Grid Spacing = 30.0'
- Values given at 3.0' above grade

- Luminaire Type: Green Generation
- Rated Lamp Life: 5000 hours
- Avg Lumens/Lamp: 134,000

CONSTANT ILLUMINATION MAX VERTICAL FOOTCANDLES

| | Statistical Area |
|-----------------------|------------------|
| No. of Target Points: | 7 |
| Average: | 0.4127 |
| Maximum: | 0.53 |
| Minimum: | 0.28 |

| | |
|--------------------------------|-------|
| Average Lamp Tilt Factor: | 1.000 |
| Number of Luminaires: | 31 |
| Avg KW over 5000 hours: | 48.36 |
| Max KW for Sizing Transformer: | 52.7 |

Guaranteed Performance: The CONSTANT ILLUMINATION described above is guaranteed for the rated life of the lamp.

Field Measurements: Averages shall be +/-10% in accordance with IESNA RP-6-01 and CIBSE LG4. Individual measurements may vary from computer predictions.

Electrical System Requirements: Refer to Amperage Draw Chart and/or the "Musco Control System Summary" for electrical sizing.

Installation Requirements: Results assume +/- 3% nominal voltage at line side of the ballast and structures located within 3 feet (1m) of design locations.

SCALE IN FEET 1 : 120



Pole location(s) ⊕ dimensions are relative to 0,0 reference point(s) ⊗

By: Micha Hudack
File #: 107085LSGR

Date: 13-Mar-06

Not to be reproduced in whole or part without the written consent of Musco Lighting. ©1981, 2006 Musco Lighting

| EQUIPMENT LIST FOR AREAS SHOWN | | | | | | | | | |
|--------------------------------|----------------|------|-----------------|-----------------|-----------|------------|-----------|-------------|---|
| Pole | | | | Luminaires | | | | | |
| QTY | LOCATION | SIZE | GRADE ELEVATION | MOUNTING HEIGHT | LAMP TYPE | QTY / POLE | THIS GRID | OTHER GRIDS | |
| 6 | A1-A4 B1-B2 | 60' | - | 60' | 1500W MZ | 2 | 2 | 0 | |
| 3 | B3-B4 C2 | 60' | - | 60' | 1500W MZ | 3 | 3 | 0 | |
| 1 | C3 | 60' | - | 60' | 1500W MZ | 4 | 4 | 0 | |
| 1 | C4 | 60' | - | 60' | 1500W MZ | 3/3* | 6 | 0 | |
| 11 | TOTALS | | | | | | 31 | 31 | 0 |

* This structure utilizes a back-to-back mounting configuration



GUARANTEED PERFORMANCE

ILLUMINATION SUMMARY

Spill - West
Bellevue Rec.

Spill - West
- Grid Spacing = 30.0'
- Values given at 3.0' above grade

- Luminaire Type: Green Generation
- Rated Lamp Life: 5000 hours
- Avg Lumens/Lamp: 134,000

CONSTANT ILLUMINATION HORIZONTAL FOOTCANDLES

| | |
|-----------------------|------------------|
| | Statistical Area |
| No. of Target Points: | 13 |
| Average: | 0.2403 |
| Maximum: | 0.34 |
| Minimum: | 0.18 |

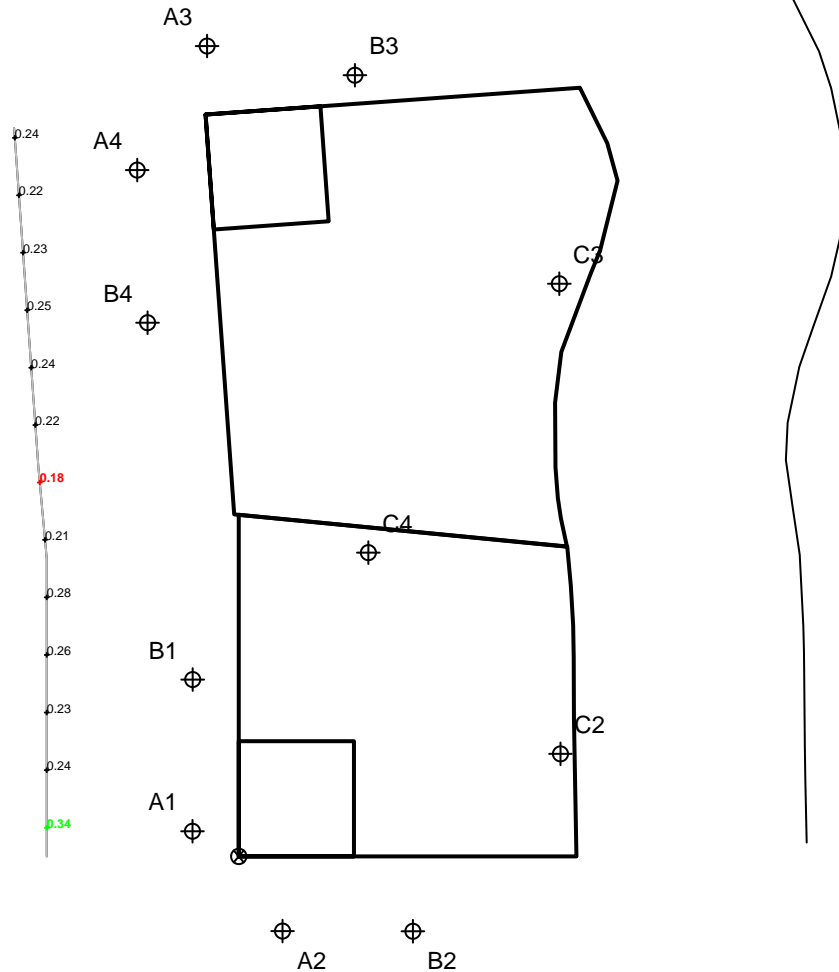
| | |
|--------------------------------|-------|
| Average Lamp Tilt Factor: | 1.000 |
| Number of Luminaires: | 31 |
| Avg KW over 5000 hours: | 48.36 |
| Max KW for Sizing Transformer: | 52.7 |

Guaranteed Performance: The CONSTANT ILLUMINATION described above is guaranteed for the rated life of the lamp.

Field Measurements: Averages shall be +/-10% in accordance with IESNA RP-6-01 and CIBSE LG4. Individual measurements may vary from computer predictions.

Electrical System Requirements: Refer to Amperage Draw Chart and/or the "Musco Control System Summary" for electrical sizing.

Installation Requirements: Results assume +/- 3% nominal voltage at line side of the ballast and structures located within 3 feet (1m) of design locations.



SCALE IN FEET 1 : 100



Pole location(s) ⊕ dimensions are relative to 0,0 reference point(s) ⊗

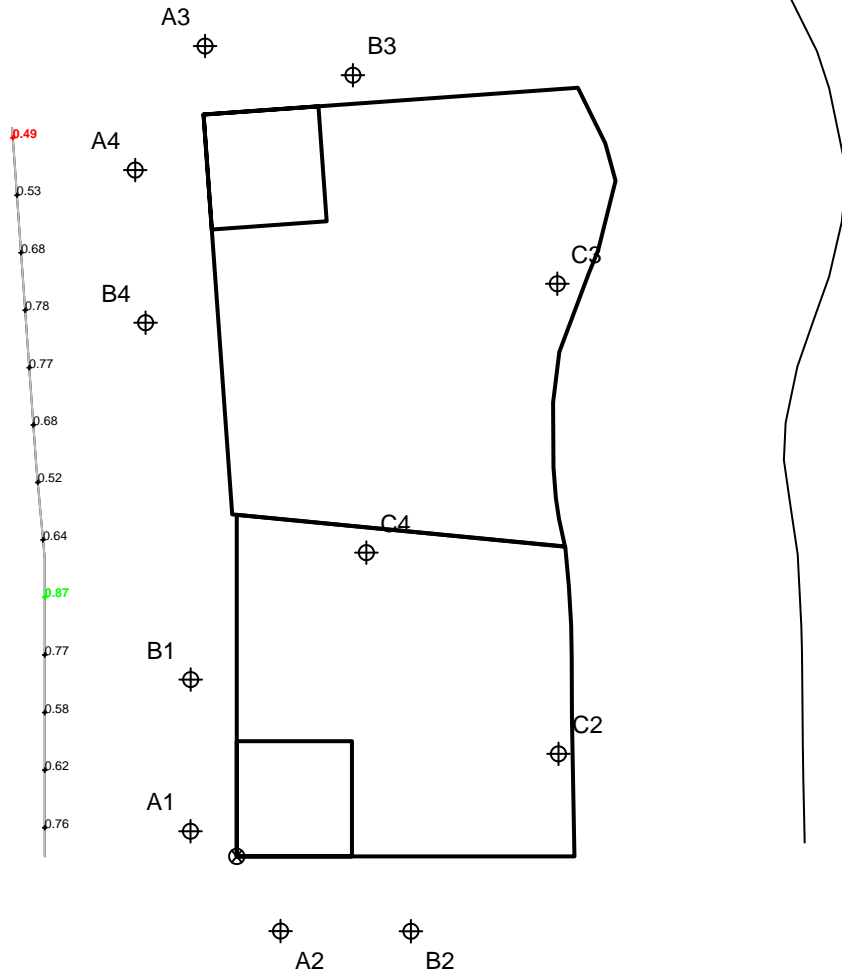
By: Micha Hudack
File #: 107085LSGR

Date: 13-Mar-06

Not to be reproduced in whole or part without the written consent of Musco Lighting. ©1981, 2006 Musco Lighting

| EQUIPMENT LIST FOR AREAS SHOWN | | | | | | | | | |
|--------------------------------|----------------|------|-----------------|-----------------|-----------|------------|-----------|-------------|---|
| Pole | | | | Luminaires | | | | | |
| QTY | LOCATION | SIZE | GRADE ELEVATION | MOUNTING HEIGHT | LAMP TYPE | QTY / POLE | THIS GRID | OTHER GRIDS | |
| 6 | A1-A4 B1-B2 | 60' | - | 60' | 1500W MZ | 2 | 2 | 0 | |
| 3 | B3-B4 C2 | 60' | - | 60' | 1500W MZ | 3 | 3 | 0 | |
| 1 | C3 | 60' | - | 60' | 1500W MZ | 4 | 4 | 0 | |
| 1 | C4 | 60' | - | 60' | 1500W MZ | 3/3* | 6 | 0 | |
| 11 | TOTALS | | | | | | 31 | 31 | 0 |

* This structure utilizes a back-to-back mounting configuration



SCALE IN FEET 1 : 100



Pole location(s) ⊕ dimensions are relative to 0,0 reference point(s) ⊗



GUARANTEED PERFORMANCE

ILLUMINATION SUMMARY

Spill - West
Bellevue Rec.

Spill - West
- Grid Spacing = 30.0'
- Values given at 3.0' above grade

- Luminaire Type: Green Generation
- Rated Lamp Life: 5000 hours
- Avg Lumens/Lamp: 134,000

CONSTANT ILLUMINATION MAX VERTICAL FOOTCANDLES

| | |
|-----------------------|------------------|
| | Statistical Area |
| No. of Target Points: | 13 |
| Average: | 0.6684 |
| Maximum: | 0.87 |
| Minimum: | 0.49 |

| | |
|--------------------------------|-------|
| Average Lamp Tilt Factor: | 1.000 |
| Number of Luminaires: | 31 |
| Avg KW over 5000 hours: | 48.36 |
| Max KW for Sizing Transformer: | 52.7 |

Guaranteed Performance: The CONSTANT ILLUMINATION described above is guaranteed for the rated life of the lamp.

Field Measurements: Averages shall be +/-10% in accordance with IESNA RP-6-01 and CIBSE LG4. Individual measurements may vary from computer predictions.

Electrical System Requirements: Refer to Amperage Draw Chart and/or the "Musco Control System Summary" for electrical sizing.

Installation Requirements: Results assume +/- 3% nominal voltage at line side of the ballast and structures located within 3 feet (1m) of design locations.

By: Micha Hudack
File #: 107085LSGR

Date: 13-Mar-06

Not to be reproduced in whole or part without the written consent of Musco Lighting. ©1981, 2006 Musco Lighting

GUARANTEED PERFORMANCE

EQUIPMENT LAYOUT

Bellevue Rec.

INCLUDES:

- Baseball-Softball1
- Baseball-Softball2

Electrical System Requirements: Refer to Amperage Draw Chart and/or the "Musco Control System Summary" for electrical sizing.

Installation Requirements: Results assume +/- 3% nominal voltage at line side of the ballast and structures located within 3 feet (1m) of design locations.

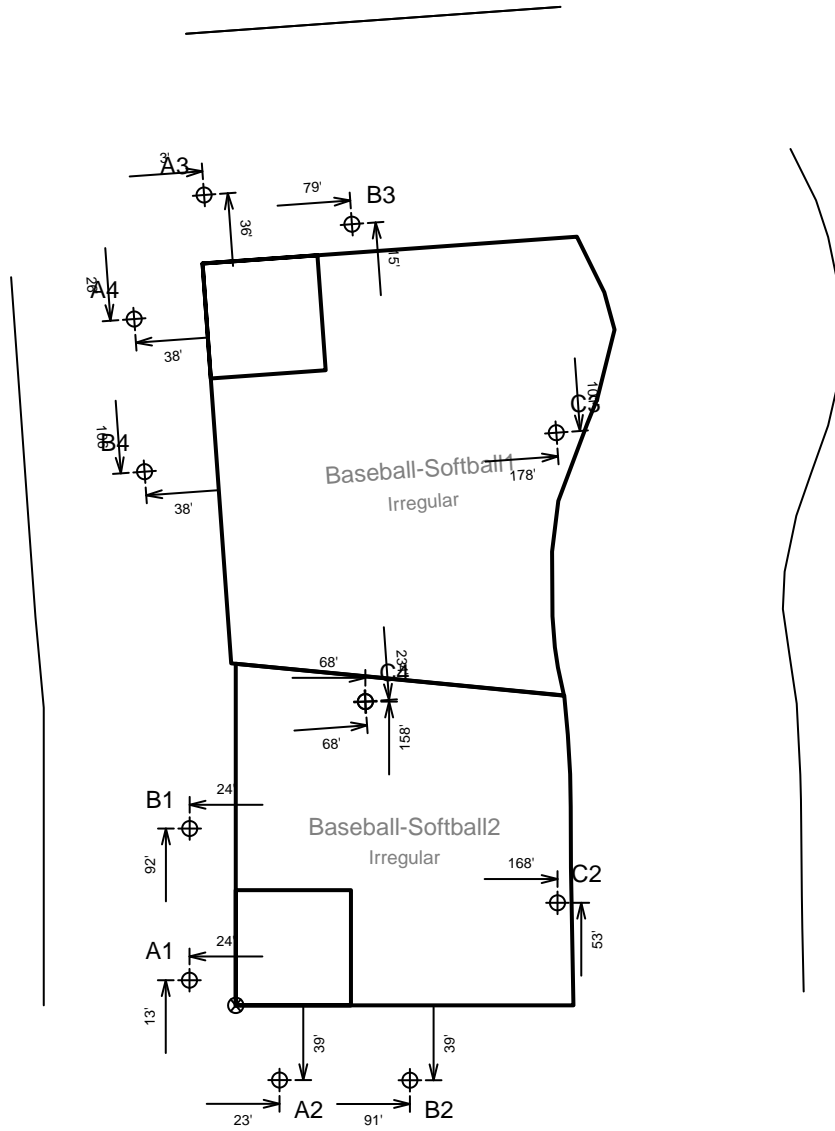
EQUIPMENT LIST FOR AREAS SHOWN

| QTY | LOCATION | SIZE | Pole | | Luminaires | | QTY / POLE |
|-----|----------------|------|-----------------|-----------------|------------|--|------------|
| | | | GRADE ELEVATION | MOUNTING HEIGHT | LAMP TYPE | | |
| 6 | A1-A4 B1-B2 | 60' | - | 60' | 1500W MZ | | 2 |
| 3 | B3-B4 C2 | 60' | - | 60' | 1500W MZ | | 3 |
| 1 | C3 | 60' | - | 60' | 1500W MZ | | 4 |
| 1 | C4 | 60' | - | 60' | 1500W MZ | | 3/3* |
| 11 | TOTALS | | | | | | 31 |

* This structure utilizes a back-to-back mounting configuration

SINGLE LUMINAIRE AMPERAGE DRAW CHART

| Ballast Specifications (.90 min power factor) | Line Amperage Per Luminaire (max draw) | | | | | | | | | |
|--------------------------------------------------|-------------------------------------------|-------------|-------------|-------------|-------------|-------------|-------------|-------------|-------------|------------|
| | 120 (60) | 208 (60) | 220 (60) | 240 (60) | 277 (60) | 347 (60) | 380 (60) | 415 (60) | 480 (60) | |
| Single Phase Voltage | | | | | | | | | | |
| 1500 watt MZ | Max Min | - 11.7 | 8.6 6.7 | 7.7 6.0 | 7.5 5.9 | 6.5 5.1 | 5.1 4.0 | - X | - X | 3.7 2.9 |



SCALE IN FEET 1 : 100



Pole location(s) ⊕ dimensions are relative to 0,0 reference point(s) ⊗

By: Micha Hudack

Date: 13-Mar-06

File #: 107085LSGr

Not to be reproduced in whole or part without the written consent of Musco Lighting. ©1981, 2006 Musco Lighting